

# COMPREHENSIVE LONG RANGE PLANNING STUDY

## NORTH SHORE

CENTRAL SCHOOL DISTRICT

2018-19

*A Service of  
Western Suffolk BOCES  
Division of Instructional  
Support Services  
Office of School Planning  
& Research*

# North Shore Central School District

## Comprehensive Long Range Planning Study & Facilities Analysis 2018-19

### BOARD OF EDUCATION

President .....Sara Jones  
Vice President..... Dave Ludmar  
Trustees .....Joanna Commander  
..... Richard Galati  
..... Tim Madden  
.....Marianne M. Russo  
.....Lisa Vizza

### DISTRICT ADMINISTRATION

Superintendent of Schools .....Dr. Peter Giarizzo  
Assistant Superintendent for Instruction ..... Robert Chlebicki  
Assistant Superintendent for Business ..... Olivia Buatsi

### BUILDING ADMINISTRATION

Glen Head Elementary School ..... Lori Nimmo, Principal  
Glenwood Landing Elementary School..... Bridget Finder, Principal  
Sea Cliff Elementary School ..... Dr. Christopher Zublionis, Principal  
North Shore Middle School.....Robert Dennis, Principal  
..... Brendan Nelson, Assistant Principal  
North Shore Senior High School.....Albert Cousins, Principal  
.....Jennifer Imperiale, Dr. Kevin Kurrus, Assistant Principals

# *North Shore Central School District*

## **MISSION STATEMENT**

*Our mission is to nurture and enrich our students' natural delight in learning and in the powers of mind and body. Each child's awakening into confident young adulthood requires guided engagement with vital ideas and events of the past to realize fresh possibilities and discoveries for the future.*

*We aspire to foster in our students those qualities of character consonant with the ideals of a democratic society. We are committed to reaching beyond routine expectations in a learning environment that encourages inquiry and builds its daily practice upon respect for oneself and others.*

# TABLE OF CONTENTS

<b>Introduction .....</b>	<b><i>i</i></b>
---------------------------	-----------------

<b>Executive Summary .....</b>	<b><i>ii</i></b>
--------------------------------	------------------

## **Section One: Demographic Analysis**

A. Population.....	1
B. Births.....	9
C. Housing.....	12
D. Non-Public School Enrollment.....	18

## **Section Two: Enrollment Analysis**

A. Projection Methodology.....	20
B. Grade - to - Grade Retention .....	22
C. Projected Entering Cohorts.....	22
D. District Enrollment .....	23
E. Enrollment of Grade Configurations.....	27

## **Facilities Analysis**

A. Facility Analysis Methodology .....	35
B. Operating Capacity .....	36
C. Space Allocation .....	37
1. Elementary (Grades K - 5) Allocation of Space .....	37
2. Elementary Instructional Sections and Average Class Sizes .....	42
3. Allocation of Space for Elementary Support Programs .....	42
4. Intermediate, Middle and High School Allocation of Space .....	44
D. Future Facilities Analysis.....	48
E. Summary .....	51

## APPENDICES

Appendix A .....	Enrollment Worksheets
Appendix B .....	Enrollment Graphs
Appendix C .....	New Resident Survey
Appendix D .....	Facilities Worksheets

## TABLES

Table 1 - Comparative Population Growth .....	2
Table 2 - Comparative Enrollment Growth .....	3
Table 3 - Foreign-Born Population in the United States from 1970 to 2060 .....	6
Table 4 - North Shore CSD Ethnic Composition of Resident Population .....	8
Table 5 - Births in the North Shore CSD 2003 - 2016 .....	11
Table 6 - Number of Home Sales and Median Prices in Nassau and Suffolk Counties .....	12
Table 7 - Home Sales in the North Shore CSD 2006 - 2017 .....	14
Table 8 - Approved and Proposed Housing in the North Shore CSD .....	15
Table 9 - Population and Enrollment Density (# per Square Miles) for Selected Areas .....	16
Table 10 - Population Characteristics for Selected Areas .....	17
Table 11 - North Shore CSD Resident Student Enrollment in Non-Public Schools .....	18
Table 12 - Projected North Shore CSD Enrollment .....	26
Table 13 - Projected North Shore CSD Elementary Enrollment .....	27
Table 14 - Projected North Shore CSD Elementary Instructional Sections .....	31
Table 15 - Projected North Shore CSD Middle and High School Enrollment .....	34
Table 16 - North Shore CSD Facility Utilization - 2018-19 .....	36
Table 17 - Elementary School Classrooms by Size .....	37
Table 18 - Elementary Instructional Space Dedication Rooms Greater than 550 Square Feet .....	38
Table 19 - 2018-19 Elementary Instructional Sections .....	42
Table 20 - 2018-19 Average Elementary Class Sizes .....	42
Table 21 - 2018-19 Allocation of Space in Square Feet - Elementary Support Programs/Services .....	43
Table 22 - 2018-19 Middle and Secondary Instructional Space .....	45
Table 23 - Projected School Enrollment Range 2019 - 2028 .....	48
Table 24 - Facility Utilization Range 2019 - 2028 .....	48

## FIGURES

Figure 1 - Projected Age Structure of the U.S. Population.....	4
Figure 2 - Population Distribution by Age for the North Shore CSD.....	5
Figure 3 - Historical & Projected Racial Structure of the U.S. Population .....	7
Figure 4 - United States Public School Enrollment by Race/Ethnicity: 2000, 2010, 2014 and 2020 .....	8
Figure 5 - New York State Births, 1997 - 2017 .....	10
Figure 6 - Nassau & Suffolk County Births, 1996 - 2016.....	10
Figure 7 - North Shore Central School District, K - 12 Enrollment .....	23
Figure 8 - North Shore Central School District Enrollment Change.....	25
Figure 9 - Glen Head ES Enrollment, 2008 - 2028.....	28
Figure 10 - Glenwood Landing ES Enrollment, 2008 - 2028.....	29
Figure 11 - Sea Cliff ES Enrollment, 2018 - 2028 .....	30
Figure 12 - North Shore MS Enrollment, 2008 - 2028.....	32
Figure 13 - North Shore Senior HS Enrollment, 2008 - 2028 .....	33
Figure 14 - Glen Head ES.....	49
Figure 15 - Glenwood Landing ES .....	49
Figure 16 - Sea Cliff ES .....	49
Figure 17 - North Shore MS.....	50
Figure 18 - North Shore Senior HS .....	50

## INTRODUCTION

At the request of the North Shore Central School District, the *Western Suffolk BOCES Office of School Planning and Research* conducted this study to assess recent demographic factors and enrollment trends in order to prepare projections through the year 2028.

The North Shore Central School District is committed to meeting the educational needs of its students. The continued monitoring of enrollment trends will give the district the data on which to consider a variety of educational issues. The foundation for this study is in keeping with the promotion of the basic district mission and philosophy.

The Board of Education and the Superintendent's efforts to plan for the future through sound management practices is fostered by comprehensive, objective data, such as contained within this *Comprehensive Long Range Planning Study*. This study serves to provide objective data that the Board of Education and administration can use in planning for the future. Planning is, however, a dynamic process that needs to reflect change. Periodic updates would allow the incorporation of subtle changes in district trends.

Barbara Graziano, School Planning Manager, oversaw all aspects of the study and served as principal researcher. Shu-ling Liu, Research Analyst, served as analyst and forecaster. Irene Bradley, Program Specialist, prepared the report. Denise Facilla, Educational Planning Assistant, provided research assistance and prepared the report for printing.

Dr. Peter Giarrizzo, Superintendent of Schools, provided access to district records, Olivia Buatsi, Assistant Superintendent for Business, provided direction on the study scope, compiled the necessary data for the study, and acted as district liaison, thus enabling the study to accomplish its objectives.

Additionally, selected references and resources were used, as indicated below:

Brookings Institution  
Bureau of Labor Statistics  
Center for Housing Policy  
Center for Immigration Studies  
Center for Public Education  
Current Population Survey  
Forbes Magazine  
Freddie Mac  
Kaiser Family Foundation  
Long Island Index  
Multiple Listing Service of Long Island  
National Alliance for Public Charter Schools  
National Association of Realtors  
National Catholic Education Association  
National Center for Education Statistics  
National Center for Health Statistics  
National Low Income Housing Coalition  
New York State Education Department  
New York State Office of the Aging  
New York State Office of Real Property Services  
New York State Office of Religious and Independent Schools  
Newsday  
Pew Research Center  
The Empire Center  
The State of the Nation's Housing 2017, Joint Center for Housing Studies of Harvard University  
Town of North Hempstead Planning Department  
Town of Oyster Bay Planning Department  
United States Customs and Border Protection  
United States Census Bureau  
United States Department of Education  
U.S. Department of Housing and Urban Development  
USA Today  
Village of Old Brookville Planning Department  
Village of Roslyn Harbor Planning Department  
Village of Sea Cliff Planning Department



## EXECUTIVE SUMMARY

**North Shore Central School District**  
**Long Range Planning Study conducted by Western Suffolk BOCES**  
**Summary of Demographic and Enrollment Analysis (page 1)**

### Demographic Analysis

- The North Shore Central School District's area demographics help us to understand the enrollment trends of the district.
- The **population** within the North Shore Central School District increased 3.7 percent between 1990 and 2000, followed by an increase of 1.8 percent between 2000 and 2010 and a 2.5 percent population increase between 2010 and 2017. The age structure of the population has shifted; the percentages of pre-school-aged children (0 - 4), young adults (20 - 39) and residents aged 65+ within the district decreased between 1990 and 2016, while the percentages of school-aged children (5 - 19) and residents aged 40 - 64 have increased. The ethnic composition of the resident population has also shifted since 1990, with growth reported in the Hispanic, Asian/other and black segments and a decrease noted in the white segment.
- **Births** in Nassau County have decreased 19.4 percent during the historical period 1996 - 2016 (2017 and 2018 county birth data is not yet available). Within the district, the number of births ranged within 133 - 176 between 2003 and 2007. Subsequently, between 2010 and 2015, births were at a lower level, ranging within 106 - 129 per year. However, births increased in 2016 to the highest level since 2007, with 133 recorded births that year.
- **Housing** turnover dropped to the lowest level of the historical period (2006 - 2017) in 2009, when 110 units were sold. Subsequently, sales activity increased most years through 2016, with 212 sales recorded that year. However, sales decreased in 2017 to 187 units; this has been attributed to a tight supply of available inventory. The median home price in 2016 was \$720,000; this is the highest price recorded since 2006 (\$750,000).
- According to NYSED, during the 2017-18 school year, 262 resident students (9.1 percent) attended non-public schools. Since 2008, non-public school enrollment has ranged within 9.7 - 11.0 percent of district resident students. This compares to the Nassau County non-public attendance rate of approximately 12.5 percent.

## **EXECUTIVE SUMMARY**

<p><b>North Shore Central School District</b></p> <p><b>Long Range Planning Study conducted by Western Suffolk BOCES</b></p> <p><b>Summary of Demographic and Enrollment Analysis (page 2)</b></p>
--

<p><b>Enrollment Analysis</b></p>
-----------------------------------

- The North Shore Central School District educates students in grades K - 12 in five district buildings.
- Historically, K - 12 district enrollment in 2018 reflects a decrease of 300 students, or 10.4 percent, when compared to 2008.
- Enrollment is projected to remain stable during the next ten years, with a loss of two students (K - 12), anticipated between the actual 2018 enrollment of 2,585 students and the projected 2028 enrollment of 2,583 students.
- It is anticipated that the kindergarten will enroll 171 - 189 students each year through 2028. In addition, smaller kindergarten cohorts will replace larger graduating twelfth grade classes during the next ten years, with losses of between 7 - 55 students each year, due to this displacement. However, on average, the district gains or maintains students in transition to most grades; the gains in migration will minimize the losses through displacement.

# EXECUTIVE SUMMARY

**North Shore Central School District**  
**Long Range Planning Study conducted by Western Suffolk BOCES**  
**Summary of Demographic, Enrollment and Facilities Analysis (page 3)**

## Facilities Analysis

- The functional and efficient operation of each facility must be viewed in the context of an optimal operational range that allows for support program space, realistic enrollment of students at each grade level, incorporation of students with special needs, optimal class size load, programmatic considerations and scheduling flexibility.
- During the ten-year projection period, utilizations in the three elementary schools will range between 72 - 75 percent at Glen Head Elementary School; 78 - 84 percent at Glenwood Landing Elementary School; and 71 - 77 at Sea Cliff Elementary School.
- Utilization at North Shore Middle School will range within 79 - 91 percent of capacity.
- Utilization at North Shore Senior High School will range within 72 - 81 percent of capacity during the next ten years.
- It is noted that the actual enrollment by grade in each school will not conform to the available number of seats in each grade level or special education classroom. Therefore, it would be unrealistic to expect utilization levels to be at 100 percent of capacity.



*Location of the North Shore Central School District*

## Section One: Demographic Analysis

*The objective of this section of the study was to evaluate demographic factors that can impact the North Shore Central School District. Changes in school enrollment occur because of variations in the number of children being born, more/fewer families moving into a community, and/or changes in the number of children attending non-public or charter schools. Therefore, the demographic factors considered were population characteristics, birthrates, housing and non-public school enrollments.*

### A. POPULATION

According to the *Census Bureau*, there were an estimated 325.7 million people living in the United States as of July 2017, representing an increase of 17 million people, or 5.5 percent, since the 2010 Census. However, this reflects a year-to-year population increase of 0.7 percent, for the second consecutive year, indicating the slowest growth since the *Great Depression*. This trifling growth rate is attributed to a lower fertility rate, lower immigration rates since the *Great Recession*, and a rise in deaths amongst Baby Boomers. *Census Bureau* projections indicate that the United States population is expected to continue to grow more slowly, with an increase of 78.2 million people forecasted between 2017 and 2060. By 2058, the population is anticipated to exceed a total of 400 million people.

New York State's population totaled approximately 19.8 million people on July 1, 2017, reflecting a gain of 471,297 people, or 2.4 percent, since the 2010 Census. However, in 2017, New York experienced a net migration loss of 60,097 people (between July 2016 and July 2017), meaning more residents moved to other states than moved in. In 2017, New York's domestic migration loss was considerably larger than any other state (-190,508), losing more residents to domestic migration than California (-138,195) and Illinois (-114,779), the next two states with the greatest losses. Recent domestic migration losses in New York have been offset by international migration (gain of 130,411 residents between 2016 and 2017) and natural increases (gain of 73,090 residents). However, it should be noted that gains through natural increase have declined each year since 2010. New York is the fourth most populous state in the country, following California (39.5 million people), Texas (28.3 million people) and Florida (21.0 million people). Prior to 2014, New York had been the third most populous state.

As shown in Table 1, between 1990 and 2000, the resident population in Nassau County increased 3.7 percent. The population also increased in the Town of North Hempstead (5.3 percent) and in the North Shore Central School District (3.7 percent), while the population in the Town of Oyster Bay (0.4 percent) remained stable. Population growth continued between 2000 and 2010, in the Town of North Hempstead (1.7 percent) and in the North Shore Central School District (1.8 percent); however, population remained relatively stable in Nassau County (0.4 percent) and the Town of Oyster Bay (-0.2 percent), during the same period. Between 2010 and 2017, Nassau County, the Towns of North Hempstead and Oyster Bay, the Villages of Old Brookville, Roslyn Harbor and Sea Cliff, the North Shore School District, as well as the adjacent districts, recorded gains of between 2.0 and 6.1 percent.

**Table 1 - Comparative Population Growth**

Location	1990	2000	2010	2017*	% change 90 - 00	% change 00 - 10	% change 10 - 17*
<b>Nassau County</b>	1,287,348	1,334,544	1,339,532	1,369,514	3.7%	0.4%	2.2%
<b>Town of North Hempstead</b>	211,393	222,611	226,322	232,920	5.3%	1.7%	2.9%
<b>Town of Oyster Bay</b>	292,657	293,925	293,214	300,385	0.4%	-0.2%	2.4%
<b>Village of Old Brookville</b>	1,823	2,167	2,134	2,207	18.9%	-1.5%	3.4%
<b>Village of Roslyn Harbor</b>	1,114	1,023	1,051	1,115	-8.2%	2.7%	6.1%
<b>Village of Sea Cliff</b>	5,054	5,066	4,995	5,100	0.2%	-1.4%	2.1%
<b>North Shore CSD</b>	<b>15,472</b>	<b>16,040</b>	<b>16,334</b>	<b>16,738</b>	<b>3.7%</b>	<b>1.8%</b>	<b>2.5%</b>
<b>Glen Cove City SD</b>	24,149	26,622	26,964	27,500	10.2%	1.3%	2.0%
<b>Jericho UFSD</b>	16,678	14,036	17,348	17,773	-15.8%	23.6%	2.4%
<b>Locust Valley CSD</b>	16,033	16,319	15,620	16,002	1.8%	-4.3%	2.4%
<b>Roslyn UFSD</b>	16,512	18,221	17,435	17,942	10.4%	-4.3%	2.9%

Source: Census Bureau

\*Estimated data

As shown in Table 2, significant enrollment gains were recorded in Nassau County, the North Shore Central School District and all of the adjacent school districts between 1990 and 2000. Between 2000 and 2010, enrollment remained stable in Nassau County, while smaller increases were recorded in the North Shore, Jericho and Roslyn School Districts; losses were recorded in the Glen Cove City and Locust Valley School Districts. Between 2010 and 2017, enrollment declined in Nassau County and in the North Shore, Locust Valley and Roslyn School Districts, with losses ranging from 2.1 to 7.9 percent, while an increase of 4.4 percent was recorded in the Glen Cove City School District; stability (gain of 0.5 percent) was recorded in the Jericho School District.

**Table 2 - Comparative Enrollment Growth**

<b>Location</b>	<b>1990 Enrollment</b>	<b>2000 Enrollment</b>	<b>2010 Enrollment</b>	<b>2017 Enrollment</b>	<b>% change 90 - 00</b>	<b>% change 00 - 10</b>	<b>% change 10 - 17</b>
<b>Nassau County</b>	169,275	203,204	203,023	198,689	20.0%	-0.1%	-2.1%
<b>North Shore CSD</b>	<b>1,836</b>	<b>2,557</b>	<b>2,852</b>	<b>2,628</b>	<b>39.3%</b>	<b>11.5%</b>	<b>-7.9%</b>
<b>Glen Cove City SD</b>	2,801	3,139	3,057	3,190	12.1%	-2.6%	4.4%
<b>Jericho UFSD</b>	1,931	2,907	2,997	3,011	50.5%	3.1%	0.5%
<b>Locust Valley CSD</b>	1,852	2,212	2,167	2,066	19.4%	-2.0%	-4.7%
<b>Roslyn UFSD</b>	2,425	3,015	3,336	3,143	24.3%	10.6%	-5.8%

The *Census Bureau* projects that the year 2030 will mark a significant “demographic turning point for the United States.” By 2030, all Baby Boomers will be age 65 or older, one in five Americans are expected to be of retirement age and immigration is anticipated to take over natural increase as the principal driver of population growth. *Census Bureau* forecasts indicate that “beyond 2030, the U.S. population is projected to grow slowly, to age considerably, and become more racially and ethnically diverse.”

As shown in Figure 1, the 65 and over age segment of the population in the United States consisted of approximately 15 percent of the total population in 2015; it is forecasted that this age segment will significantly grow and comprise nearly 24 percent of the total population in 2060. However, the percentage of residents under 18 years of age is projected to decrease from nearly 23 percent of the population in 2015 to less than 20 percent in 2060. The 18 - 24, 25 - 44 and 45 - 64 age segments are also forecasted to decrease between 2015 and 2060, from 10 to 8 percent, from 26 to 25 percent, and from 26 to 24 percent, respectively.

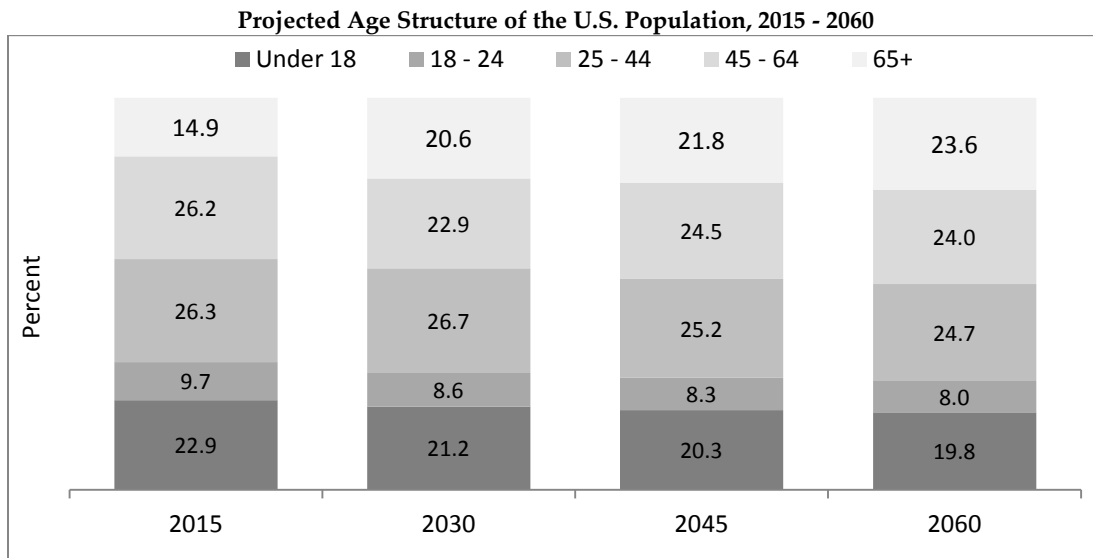


Figure 1 - Projected Age Structure of the U.S. Population  
Source: Census Bureau



Between 2010 and 2016, the 19 and under segment in Nassau County decreased from 25.7 to 24.7 percent of the population, while the 65-and older segment grew from 15.3 to 16.4 percent. During the same period, the 19 and under segment in Suffolk County decreased from 26.6 to 24.9 percent of the population, while the 65-and older segment grew from 13.5 to 15.2 percent.

As shown in Figure 2, the age structure of the resident population in the North Shore School District has shifted between 2000 and 2016. The percentage of pre-school aged (0 - 4 years) children decreased from 6.3 percent of the population in 2000 to 4.7 percent in 2016, while the percentage of school-aged (5 - 19 years) children increased from 19.9 to 21.4 percent. During the same period, the young adult (20 - 39) age segment decreased, from 21.0 percent in 2000 to 16.9 percent in 2016; it is important to note that this segment contains residents of peak child-bearing ages. During the same period, the 40 - 64 age segment increased from 36.6 percent to 41.0 percent, while the 65 and over age segment decreased from 16.3 to 15.8 percent.

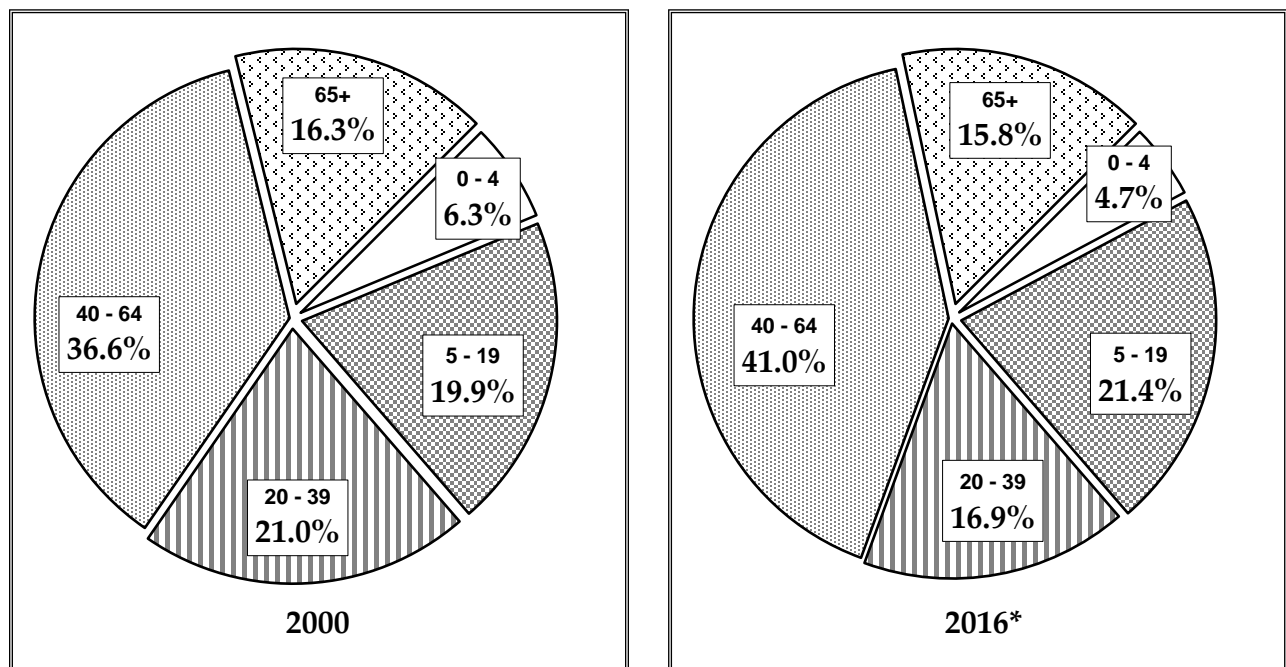


Figure 2 - Population Distribution by Age for the North Shore CSD

\*2012-2016 American Community Survey Estimates

As shown in Table 3, there has been significant growth in the foreign-born population in the United States. Between 1970 and 2016, the immigrant population has quadrupled, increasing from approximately 9.6 million people to 43.7 million people. The immigrant share of the total U.S. population increased from 4.7 percent to 13.5 percent, during this period. *Census Bureau* projections anticipate that the foreign-born population will further increase to 69.3 million people by 2060 and account for 17.2 percent of the United States population.

**Table 3 - Foreign-Born Population in the United States from 1970 to 2060**

Year	1970	1980	1990	2000	2010	2016	2020	2030	2040	2050	2060
<b>Number of Immigrants (Millions)</b>	9.6	14.1	19.8	31.1	40.0	43.7	46.7	53.8	60.2	65.3	69.3
<b>Immigrant Share of Total U.S Population</b>	4.7%	6.2%	7.9%	11.1%	12.9%	13.5%	14.0	15.2	16.1	16.8	17.2

*Source: Census Bureau*

The majority of the foreign-born population has immigrated from Latin America and the Caribbean, with the greatest numbers (as of 2016) settling in California (9.9 million people), New York (4.2 million people), Texas (3.9 million people), Florida (3.4 million people) and Illinois (1.8 million people). In 2016, immigrants from Latin America accounted for approximately 51 percent of the foreign-born population, while Asians accounted for nearly 31 percent and Europeans accounted for approximately 11 percent of the foreign-born population. This is a substantial change since 1960, when 75 percent of immigrants in the United States were from Europe, nine percent were from Latin America and five percent were from Asia.

A *Kaiser Family Foundation* survey from 2016 indicates that 20 million children in the United States lived with at least one foreign-born parent; this reflects one in four children under the age of 18 having at least one foreign-born parent. More than half of those children live in four states, which include California, Texas, New York and Florida.

The foreign-born population in New York State increased by 6.3 percent between 2010 and 2016, increasing from nearly 4.2 million people in 2010 to more than 4.4 million people in 2016; this represents 23 percent of New York State's population. The foreign-born population in New York comprises approximately 49 percent of people from Latin America, 29 percent from Asia and almost 17 percent from Europe. In Nassau County, the foreign-born population increased 7.6 percent between 2010 and 2016, representing approximately 22 percent of the population in 2016, while the foreign-born population increased approximately 11 percent in Suffolk County, representing 15 percent of the population in 2016. According to *Census Bureau* estimates, the foreign-born population in the North Shore School District grew from 12.8 percent to approximately 15.7 percent of the resident population between 2010 and 2016.

Immigration has led to a shift in the ethnic structure of the United States population. In 2010, approximately 64 percent of the population was white, down from 85 percent in 1960. The country's white population is forecasted to become "majority minority" in 2044; by 2060, the combined minority population is forecasted to comprise approximately 56 percent of the total population, compared to 36 percent in 2010. As shown in Figure 3, Hispanics were the largest minority group in 2010, accounting for approximately 16 percent of the population, followed by blacks (12.2 percent), Asian/other (5.8 percent) and those identifying themselves as two or more races (1.9 percent). However, Asians are the fastest growing minority group, growing by 8.3 percent between 2010 and 2015.

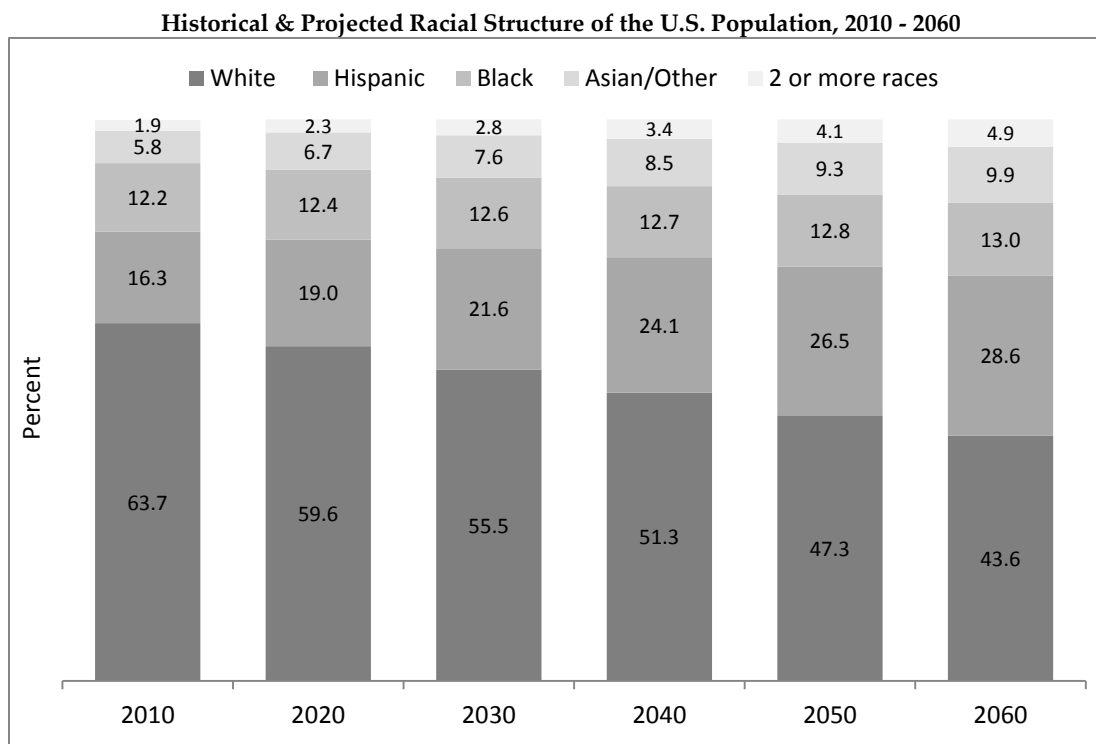


Figure 3 - Historical & Projected Racial Structure of the U.S. Population  
Source U.S. Census Bureau

The *Census Bureau* reported that a majority of Baby Boomers are non-Hispanic white. It is projected that as the number of Baby Boomers declines as a result of mortality, the United States will see a significant decrease in the percentage of non-Hispanic whites. Immigration and births to minority populations are also expected to lead to a progressively diverse population.

In New York State, whites made up approximately 56 percent of the population in 2016, down from 62 percent in 2000, while minorities represented 44 percent of state residents. Hispanics are the largest minority group at 18.6 percent, followed by blacks (14.4 percent), Asian/other (8.9 percent) and those identifying themselves as two or more races (1.8 percent). As of 2016, five states are "majority-minority": California, Hawaii, New Mexico, Texas and Nevada.

The ethnic composition of the populations within Nassau and Suffolk Counties has also shifted. The Hispanic segment of the population in both counties grew between 2010 and 2016, increasing from 14.6 to 16.1 percent in Nassau County and from 16.5 to 18.2 percent in Suffolk County. In Nassau County, the Asian/other and black segments also increased between 2010 and 2016, growing from 8.1 to 9.3 percent and from 10.5 to 11.0 percent of the population, respectively, while the white segment decreased from 65.5 to 62.2 percent; 1.5 percent of residents identified themselves as two or more races in 2016. During this period, Suffolk County also recorded gains in the Asian/other and black segments, with increases from 3.8 to 4.2 percent and from 6.8 to 7.2 of the population, respectively, while the white population decreased from 71.6 to 69.2 percent; 1.3 percent of residents identified themselves as two or more races in 2016.

As shown in Table 4, there have been changes in the ethnic composition of the resident population within the North Shore Central School District between 1990 and 2016. During this period, the white segment of the population decreased from 93.4 to 83.0 percent, while the black, Hispanic and Asian/other segments increased, growing from 0.7 to 2.5 percent, from 3.1 to 7.0 percent and from 2.7 to 5.8 percent, respectively; 1.8 percent of residents identified themselves as two or more races in 2016.

**Table 4 - North Shore CSD Ethnic Composition of Resident Population**

Year	White	Black	Hispanic	Asian/other	2 or More Races
1990	93.4%	0.7%	3.1%	2.7%	n/a
2000	91.3%	0.9%	4.0%	2.9%	0.8%
2010	86.2%	1.4%	6.7%	4.6%	1.1%
2016*	83.0%	2.5%	7.0%	5.8%	1.8%

Sources: School District Demographics System, American Fact Finder 2, New York State Data Center

\*American Fact Finder 2 Estimates

The *National Center for Education Statistics* reported that beginning in the 2014-15 school year, there were fewer white students (49.8 percent) than minority students enrolled in the United States public school system. As shown in Figure 5, in 2000, white students comprised approximately 61 percent and minority students comprised approximately 39 percent of the country's public school enrollment. By 2020, white students are projected to comprise approximately 46 percent and minority students are expected to comprise approximately 54 percent of the country's public school enrollment.

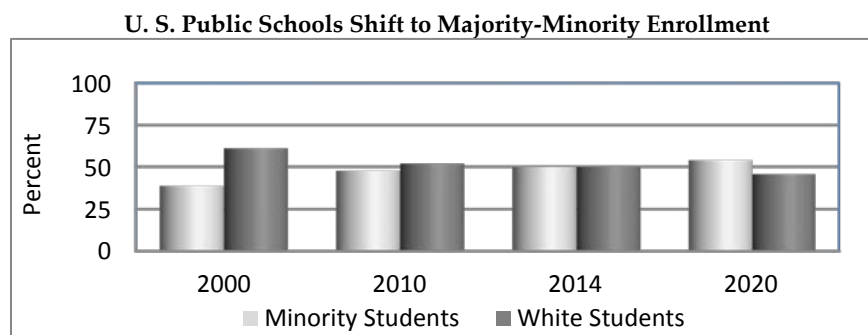


Figure 4 - United States Public School Enrollment by Race/Ethnicity: 2000, 2010, 2014 and 2020

Source: National Center for Education Statistics

A report from *United States Customs and Border Protection* states that unaccompanied minor children (UACs) aged 0 - 17 years old continue to enter the United States on humanitarian grounds. There were approximately 41,000 children apprehended in FY2018 YTD (fiscal year October 1, 2017 - July 30, 2018), which is an increase of 16 percent compared to the same period last year; the number for family units apprehended was up 29 percent during this period. The greatest numbers of UACs come from El Salvador, Guatemala, Honduras and Mexico as they flee from high crime, gang violence and poverty in their native countries. The greatest numbers of UACs have settled in Texas, California, New York and Florida, followed by New Jersey, Virginia and Maryland.

## **B. BIRTHS**

Provisional data from the *National Center for Health Statistics* indicates that there were 3,853,472 recorded births in 2017. This is the lowest number of recorded births since 1987 and reflects a decrease of two percent when compared to 2016. The general fertility rate also decreased in 2017 to 60.3 births per one thousand women between the ages of 15 and 44. This is the lowest fertility rate on record and compares to 62.0 births in 2016 and 62.9 births in 2014. The peak fertility rate of 122.7 births occurred in 1957, during the Baby Boom years.

Declining births have been attributed to various factors, including lower starting salaries, substantial student loan debt, and elevated rental costs. These issues have resulted in a growing number of young people continuing to live with their parents, resulting in delayed marriage and childbearing. This is reflected in the average age of first birth, which has increased from 24.9 years in 2000 to 26.6 years in 2016 (latest available data), a record high for the country. In 2016, it was reported that 50 percent of adults 18 and over were married, compared to 72 percent in 1960.

In 2017, record low birth rates were seen in all age groups under the age of 30 and decreases were seen in all age groups under the age of 40. Teen women between the ages of 15 - 19 experienced the most significant birth rate decline (7 percent), when compared to the prior year. The birth rate for women in their early twenties (20 - 24) and in their late twenties (25 - 29) each decreased four percent, while the birth rates for women aged 30 - 34 and 35 - 39 decreased two and one percent, respectively. It should be noted that birth rates for the 30 - 34 and 35 - 39 age groups decreased for the first time since 2012 and 2011, respectively. However, the birth rate for women aged 40 - 44 increased two percent, while women aged 45 - 49 had their highest birth rates since 1963 (for the second consecutive year), with 0.9 births per 1,000 women. This has been attributed to women delaying childbearing for various reasons.

Shifts in fertility patterns among minority groups have also affected birth rates. Between 2000 and 2017, birth rates have fallen for all racial/ethnic groups, with the most significant decline reported in the Hispanic segment, falling from a peak of 98.3 births in 2006 to 67.6 births in 2017. Birth rates for NHOPI (Native Hawaiian or other Pacific Islander) women was the highest with 73 births per 1,000 women, followed by Hispanic women (68 births), blacks (63 births), AIAN (American Indian/Alaska Native) women (60 births), Asian women (58 births) and whites (57 births).

The non-marital birth rate for women between the ages of 15 - 44 declined for the eighth consecutive year in 2016 (latest available data), to 42.4 births per 1,000 women. Amongst racial and ethnic groups, black women have the greatest percentage of unwed births (69.8 percent), while the lowest percentage of unwed births (12.0 percent) are accounted for by Asian women.

Reflecting the national trend, the number of births in New York State decreased in 2017 when compared to the previous year. Provisional numbers indicate that there were 229,737 births recorded in 2017, reflecting a decrease of 1.3 percent when compared to 2016. However, this represents a decrease of 9.1 percent when compared to the number of births in 2007 (252,662 births) and a decrease of 10.6 percent when compared to births in 1997 (256,976 births).

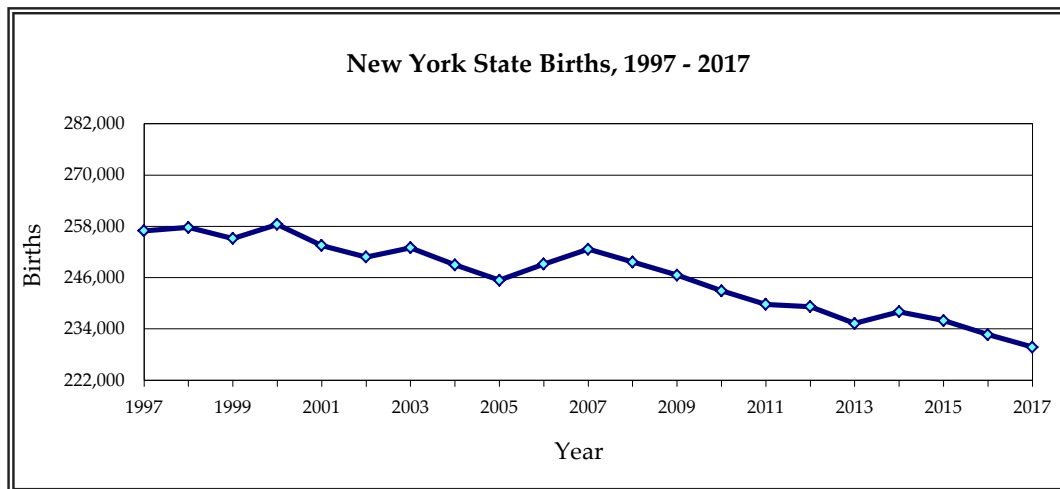


Figure 5 - New York State Births, 1997 - 2017  
Note: 2017 data are provisional

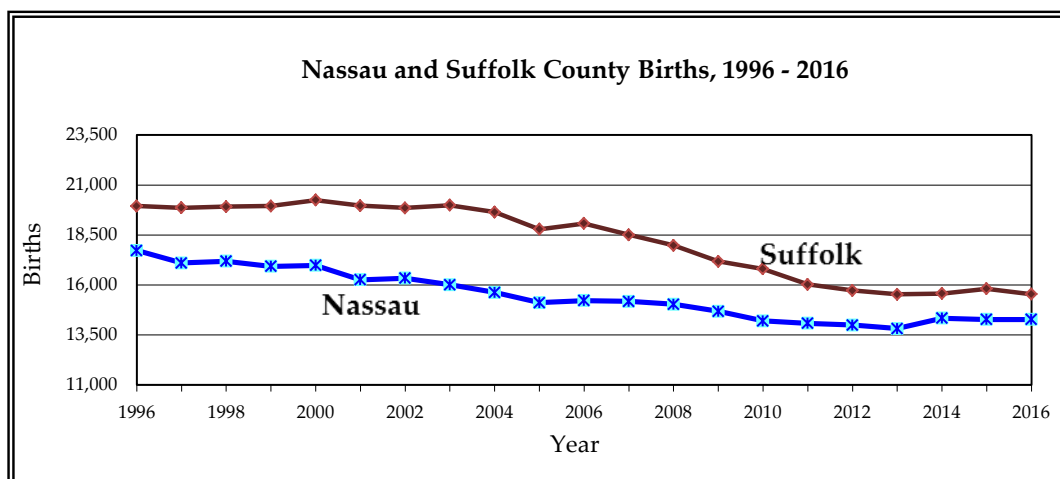


Figure 6 - Nassau & Suffolk County Births, 1996 - 2016  
Note: 2017 County birth data is not yet available

Figure 6 shows births in Nassau County decreased by approximately 15 percent between 1996 and 2005, followed by stability between 2005 and 2007. However, since 2007, births have further decreased by 6.9 percent, with 14,277 births recorded in 2016. Births in Suffolk County remained stable between 1996 and 2003, but then decreased significantly (23.3 percent) between 2003 and 2016, with 15,539 births recorded in 2016.

As shown in Table 5, the number of births in the North Shore School District ranged within 133 - 176 between 2003 and 2007. Subsequently, between 2010 and 2015, births were at a lower level, ranging within 106 - 129 per year. However, births increased in 2016 to the highest level since 2007, with 133 recorded births that year.

**Table 5 - Births in the North Shore CSD 2003 - 2016**

<b>Year</b>	<b>North Shore CSD</b>	<b>Towns of North Hempstead &amp; Oyster Bay</b>
<b>2003</b>	176	5,859
<b>2004</b>	161	5,673
<b>2005</b>	139	5,384
<b>2006</b>	133	5,300
<b>2007</b>	134	5,406
<b>2008</b>	111	5,288
<b>2009</b>	131	5,263
<b>2010</b>	124	5,008
<b>2011</b>	111	4,985
<b>2012</b>	129	4,964
<b>2013</b>	106	4,861
<b>2014</b>	115	4,970
<b>2015</b>	116	4,904
<b>2016</b>	133	4,981

Source: NYS Dept. of Health

Note: 2017 town & school district birth data is not yet available

## C. HOUSING

During 2018, various national housing statistics indicated continued strength in the real estate markets, with strong buyer demand, rising prices, and in some cases, bidding wars occurring. The median sale price for new homes in October 2018 was \$309,700; this reflects an increase of almost 52 percent when compared to the median sale price of \$204,200 in October 2010.

However, according to the *National Association of Realtors*, the share of first-time home buyers in 2018 (33 percent), represents a decrease from the previous year (34 percent) and is down from the historical norm of 40 percent of the market. Many first-time homebuyers are facing hardships when it comes to purchasing a home, as younger buyers have been affected by crippling student loan debt, rising home prices, limited new construction of starter homes and a tightened supply of available homes to purchase. Nevertheless, the size of the Millennial population, increased credit opportunities, a strong job market, relatively low interest rates and rising rents have pushed young people who can afford a down payment to purchase a home.

The housing market may be further affected by a new tax law that was put into effect in December 2017, which includes a \$10,000 tax cap on state and local tax (SALT) deductions. Residents in high-tax states, including New York, California and New Jersey, will feel the greatest impact from this new tax law.

In January, inconsistent with the increases being seen nationally, the residential real estate markets in Nassau and Suffolk Counties posted monthly year-to-year sales losses of 2.8 and 6.0 percent, respectively. In Nassau County, there were 916 completed home sales reported for the month of January, compared to 942 the previous January; in Suffolk County there were 1,154 completed home sales reported, compared to 1,255 the previous January. The median sale prices (for single family homes) increased in both Nassau and Suffolk Counties in January, with gains of 5.0 and 5.8 percent, respectively. The growth in median sale prices has been attributed to a tight supply of available inventory. Home prices in Nassau County have recovered to pre-recession levels, as has been seen in many communities nationally; in January the median sale price in Nassau County was 0.9 percent higher than the August 2007 high of \$520,500. Home prices in Suffolk County have not yet recovered to pre-recession levels; the Suffolk County median sale price in January was 9.5 percent lower than the June 2007 high of \$420,000.

**Table 6 - Number of Home Sales and Median Prices in Nassau and Suffolk Counties**

County	January 2019		January 2018		Change	
	# Sales	Median Price	# Sales	Median Price	# Sales	Median Price
Nassau County	916	\$525,000	942	\$500,000	-2.8%	5.0%
Suffolk County	1,154	\$380,000	1,255	\$359,000	-6.0%	5.8%

Source: Multiple Listing Service of Long Island



The *Pew Research Center* reported that more households were renting in 2016 than at any point since 1965. The share of households renting their home has grown during the last ten years, from 31.2 percent in 2006 to 36.6 percent in 2016. This is reflective of several factors, including the long term effects of the housing crash during the *Great Recession*, and the challenges millennials face as they enter the housing market. In 2016, 65 percent of households headed by people under the age of 35 were renting as compared to 57 percent in 2006. This compares to the percentage of renters in the 35 - 44 age segment (41 percent), the 45 - 64 age segment (28 percent) and the 65 and over age segment (21 percent) in 2016. All major racial and ethnic groups were more likely to rent when compared to a decade ago; however, black and Hispanic households are nearly twice as likely to rent as white households. As of 2016, 58 percent of black household heads and 54 percent of Hispanic household heads were renting, compared to 28 percent of white households.

There has also been growth in the number and share of multi-generational households. In 2016, one-in-five Americans lived in a multi-generational home, accounting for 64 million people, or 20 percent, of the United States population. This is an increase since 2009 when 51.5 million people, or 17 percent of Americans, lived in a multi-generational home. Among ethnic groups, reportedly 29 percent of Asians, 27 percent of Hispanics and 26 percent of blacks were living in a multigenerational home in 2016, as compared to 16 percent of whites.

The *Census Bureau* reported that the homeownership rate for the third quarter of 2018 was 64.4 percent; this is an increase of 2.3 percent when compared to the second quarter of 2016, when the homeownership rate was at a 50-year low of 62.9 percent. Among ethnic groups, homeownership rates for black and Hispanic households continue to remain well below the homeownership rate of white households, resulting in a gap between white and minority ownership. In the third quarter of 2018, the homeownership rates for the black and Hispanic segments of the population were 41.7 percent and 46.3 percent, respectively, compared to 73.1 percent for the white segment of the population.

As shown in Table 7, housing sales in the North Shore School District dropped to the lowest level of the historical period (2006 - 2017) in 2009, when 110 units were sold. Subsequently, sales activity increased most years through 2016, with 212 sales recorded that year. However, sales decreased in 2017 to 187 units; this has been attributed to a tight supply of available inventory. The median home price in 2016 was \$720,000; this is the highest price recorded since 2006 (\$750,000).

**Table 7 - Home Sales in the North Shore CSD 2006 - 2017**

<b>Year</b>	<b>Number of Sales</b>	<b>Median Price</b>
<b>2006</b>	172	\$750,000
<b>2007</b>	148	\$700,000
<b>2008</b>	143	\$710,000
<b>2009</b>	110	\$562,500
<b>2010</b>	114	\$636,250
<b>2011</b>	128	\$590,000
<b>2012</b>	131	\$635,000
<b>2013</b>	192	\$611,000
<b>2014</b>	197	\$698,000
<b>2015</b>	179	\$702,500
<b>2016</b>	212	\$720,000
<b>2017</b>	187	\$718,000

Source: New York State Office of Real Property Services

Housing data for the area encompassed by the North Shore Central School District indicated that in 2016, 96.3 percent of the total housing was occupied and 3.7 percent was vacant. Occupied housing can be inhabited by the owner of the house or a renter. In 2016, 83.2 percent of housing in the district was owner occupied and 16.8 percent was renter occupied. This is similar to Nassau County, with 80.3 percent of occupied housing inhabited by the owner and 19.7 percent of housing occupied by a renter.

The Planning and Development Departments of the Towns of North Hempstead and Oyster Bay and the Villages of Old Brookville, Roslyn Harbor and Sea Cliff were contacted regarding the status of current building projects, as well as any new developments before the planning boards. As detailed in Table 8, there are a small number of projects in various stages of the approval process.

**Table 8 - Approved and Proposed Housing in the North Shore CSD**

<b>Project name</b>	<b>Number of Units</b>	<b>Status</b>
<i>Town of North Hempstead</i>		
Glen Harbor Commons, LLC	60 units (senior condominiums)	Approved 2009; needs approval for sewers
<i>Town of Oyster Bay</i>		
Country Club Developers	6 sf	Under review
Glenwood Landing Subdivision	6 sf	Under review
Dumond Enterprises, LLC	53 units (38 townhomes, 15 sf)	Approved 2008; need bldg. permits
<i>Villages of Old Brookville and Roslyn Harbor</i>		
No new projects		
<i>Village of Sea Cliff</i>		
The Village did not respond to requests for information		

Source: Towns & Villages Planning Departments

The *Western Suffolk BOCES Planning Team* conducted a recent survey of new residents to the district; 29 resident responses were received. The majority of people responding to the survey were in the 40 - 64 age segment (nineteen respondents). Nine respondents were aged 20 - 39; one of the respondents was over 65 years of age.

Nineteen respondents had children of school-age or pre-school age. The displacement of school-age children between the buyers and sellers was positive; that is, the number of sellers that had children between the ages of 0 - 18 was smaller than the number of buyers that moved in with school-aged children. Twenty-two respondents claimed that they would send any children they may have in the future to the North Shore School District.

Ten respondents replied that this was the first home they owned and eight respondents indicated that they had lived within the district prior to purchasing their current home; many of the respondents indicated they had relocated from other parts of Nassau County or from New York City. The schools, price of housing and the proximity to work and family were important factors for those purchasing in the area.

The amount of available land naturally affects potential housing starts. Population and enrollment density (persons/pupils per square mile) presents a general index of available land and population composition. As shown in Table 9, the data indicates that the North Shore Central School District uses land at a lower density, with a lower student yield relative to that of Nassau County. As of 2017, there were approximately 326 students and 2,079 persons per square mile in the North Shore Central School District, as compared to 698 students and 4,810 persons per square mile in Nassau County. There are approximately 8.05 square miles, or 5,152 acres of land within the North Shore Central School District, offering a suburban lifestyle. Other uses of land include commercial, institutional (schools, medical facilities, religious houses of worship), recreational, open space and utilities.

**Table 9 - Population and Enrollment Density (# per Square Miles) for Selected Areas**

Location	Area (sq. miles)	1990		2000		2010		2017	
		Pop Density	Enroll Density	Pop Density	Enroll Density	Pop Density	Enroll Density	Pop Density	Enroll Density
Nassau County	284.72	4,521	595	4,687	714	4,705	713	4,810	698
Town of North Hempstead	53.51	3,951	n/a	4,160	n/a	4,230	n/a	4,353	n/a
Town of Oyster Bay	103.75	2,821	n/a	2,833	n/a	2,826	n/a	2,895	n/a
Village of Old Brookville	4.00	456	n/a	542	n/a	534	n/a	552	n/a
Village of Roslyn Harbor	1.19	936	n/a	860	n/a	883	n/a	937	n/a
Village of Sea Cliff	1.11	4,553	n/a	4,564	n/a	4,500	n/a	4,595	n/a
North Shore CSD	8.05	1,922	228	1,993	318	2,029	354	2,079	326
Glen Cove City SD	6.65	3,631	421	4,003	472	4,055	460	4,135	480
Jericho UFSD	12.06	1,383	160	1,164	241	1,438	249	1,474	250
Locust Valley CSD	14.94	1,073	124	1,092	148	1,046	145	1,071	138
Roslyn UFSD	5.38	3,069	451	3,387	560	3,241	620	3,335	584

Source: Census Bureau

As shown in Table 10, since 2000, the percentages of households with children under 18 has been decreasing in Nassau County, in the Towns of North Hempstead and Oyster Bay, as well as in the North Shore School District. In 2000, approximately 36.3 percent of households in the North Shore School District had children under the age of 18; by 2016, approximately 35 percent of district households had children under 18. This compares to Nassau County, in which approximately 36 percent of households had children of this age in 2016. Between 2000 and 2016, the number of public school children per household in the North Shore School District increased from 0.43 to 0.45 children. Nassau County, also recorded 0.45 public school children per household in 2016. The median age in Nassau County has increased from 38.5 years in 2000 to 41.4 years in 2016; this is greater than the New York State median age of 38.2 years and the United States median age of 38.0. The median age in the North Shore Central School District was 45.1 years in 2016.

**Table 10 - Population Characteristics for Selected Areas**

Location		Nassau County	Town of North Hempstead	Town of Oyster Bay	Village of Old Brookville	Village of Roslyn Harbor	Village of Sea Cliff	North Shore CSD
Household Size	1990	3.0	2.8	3.1	3.1	2.9	2.5	2.8
	2000	3.0	2.9	3.0	3.0	2.9	2.5	2.7
	2010	3.0	2.9	2.9	3.2	2.9	2.5	2.8
	2012-16*	3.1	3.0	3.1	3.4	3.2	2.7	2.8
% of Households with Children under 18	1990	35.4%	32.4%	36.1%	34.0%	34.4%	26.9%	31.7%
	2000	38.6%	36.1%	38.7%	38.6%	36.2%	32.7%	36.3%
	2010	36.8%	35.5%	36.9%	39.5%	37.4%	32.2%	35.7%
	2012-16*	36.0%	35.5%	35.4%	44.4%	39.7%	32.1%	34.7%
# Public School Children per Household	1990	0.39	n/a	n/a	n/a	n/a	n/a	0.33
	2000	0.45	n/a	n/a	n/a	n/a	n/a	0.43
	2010	0.45	n/a	n/a	n/a	n/a	n/a	0.48
	2012-16*	0.45	n/a	n/a	n/a	n/a	n/a	0.45
% of Population under age 5	1990	6.1%	5.5%	5.9%	n/a	n/a	6.1%	5.4%
	2000	6.5%	6.2%	6.5%	5.8%	5.9%	5.5%	6.3%
	2010	5.5%	5.5%	4.9%	4.5%	5.2%	4.7%	4.7%
	2012-16*	5.4%	5.6%	4.7%	4.5%	4.3%	4.4%	4.7%
Median Age	1990	36.5	39.0	37.0	41.3	42.2	38.4	n/a
	2000	38.5	39.9	39.8	42.6	45.6	41.7	n/a
	2010	41.1	42.4	43.1	45.2	48.2	44.6	44.6
	2012-16*	41.4	42.8	43.8	40.5	47.9	47.8	45.1

Source: U.S. Dept. of Commerce, Bureau of Census; NYSED

\* American Community Survey Estimates

## D. NON-PUBLIC SCHOOL ENROLLMENT

According to data from the *Census Bureau*, there were 5.5 million K - 12 students in the United States enrolled in private schools in 2016 (latest available data). Private school enrollment decreased in the nation by nearly 190,000 students between 2010 and 2016; projections indicate that private school enrollment will further decrease to 5.1 million students by 2025.

The *Census Bureau* reported that in 2016, private schools in New York enrolled approximately 416,807 students (13.4 percent of all New York State school-age children) in grades K - 12. This is a 9.3 percent decrease since 2010, when approximately 460,000 students, or nearly 14 percent of all New York State school-age children, attended private schools. According to NYSED, between 2010 and 2016, the percentage of all school age children attending private schools in Nassau County decreased from 13.0 to 12.5 percent.

As shown in Table 11, according to NYSED, last year (2017-18 school year) 262 North Shore School District resident students (9.1 percent) attended non-public schools. Since 2008, non-public school enrollment has ranged within 9.1 - 11.0 percent of district resident students.

**Table 11 - North Shore CSD Resident Student Enrollment in Non-Public Schools**

<b>Year</b>	<b>Non-Public Enrollment (K - 12)</b>	<b>Public Enrollment (K - 12)</b>	<b>Total Public &amp; Non-Public Enrollment (K - 12)</b>	<b>% Non-Public (K - 12)</b>
<b>2008</b>	318	2,885	3,203	9.9%
<b>2009</b>	313	2,866	3,179	9.8%
<b>2010</b>	312	2,852	3,164	9.9%
<b>2011</b>	308	2,828	3,136	9.8%
<b>2012</b>	295	2,757	3,052	9.7%
<b>2013</b>	322	2,718	3,040	10.6%
<b>2014</b>	305	2,692	2,997	10.2%
<b>2015</b>	318	2,687	3,005	10.6%
<b>2016</b>	325	2,643	2,968	11.0%
<b>2017</b>	262	2,628	2,890	9.1%

Source: NYSED

According to data from the *National Catholic Education Association*, Catholic school enrollment peaked in the United States during the early 1960's, when more than 5.2 million students were enrolled in nearly 13,000 Catholic schools. By 1990, Catholic school enrollment had significantly decreased (52 percent) with 2.5 million students enrolled in 8,719 Catholic schools. In the past decade, Catholic school enrollment has continued to decline, from approximately 2.3 million students enrolled in 2007 to 1.8 million students enrolled in 2017; this represents a decrease of 65 percent since the peak enrollment. In the 2018-19 school year there were reportedly 6,352 Catholic schools in operation, representing a year-to-year decrease of 77 Catholic schools.

Catholic school enrollment decreases have been attributed to rising tuition costs, the growth of charter schools, and an increase in the number of students being homeschooled or selecting *School Choice*. Catholic school enrollment was also impacted, and has yet to recover, by the *Great Recession* (2007 - 2009), as families were affected by job losses, lower wages and salary reductions.

Private school enrollment has decreased as the number of charter schools has grown, primarily because charter schools offer a tuition-free alternative to traditional public school settings, while providing the individualized attention that private schools are said to offer. There has been significant growth since 2006, when 1.2 million students were enrolled in charter schools. According to the *National Alliance for Public Charter Schools*, during the 2018-19 school year, it is estimated that there were 7,038 charter schools in the United States, housing nearly 3.2 million students.

According to the *New York State Education Department*, there are currently 320 charter schools in operation in New York State. At the present time, there are five charter schools in operation on Long Island, located in Roosevelt, Hempstead (2), Uniondale and Riverhead.

Private school enrollment will potentially be affected by *School Choice*. *School Choice* has been established in 31 states and offers a variety of programs that fall into several categories, including Education Savings Accounts (ESAs), School Vouchers, Tax-Credit Scholarships and Individual Tax Credits and Deductions. It should be noted that a universal program does not exist; therefore there are variations in regards to what is offered in each state. *School Choice* options include charter schools, magnet schools, inter/intra-district public school choice, homeschooling, online learning, customized learning, and town tuitioning.

Homeschooling is another factor that has led to a decline in private school enrollment. During the economic recession in the late 2000's, more families with non-working adults who would have previously sent their children to a private school opted to homeschool their children. Estimates indicate that over 2.3 million children were homeschooled during the 2016-17 school year (latest available data); this is an increase from 1.1 million students in 2003 and from 2 million students in 2010.

## Section Two: Enrollment Analysis

*The objective of this section of the study was to evaluate the district's enrollment trends and variables in order to project future enrollments. The projected enrollment incorporates assumptions based on the demographic analysis presented in Section One.*

This study uses BEDS enrollment data from the *New York State Department of Education* and the North Shore Central School District. The objective of this section of the study was to calculate enrollment projections for the district, each grade level and for each school, for the next ten years.

The enrollment projections in this report incorporate past and present demographic factors, which include population characteristics, birthrates, housing and non-public school enrollment. If any significant changes in these factors occur, as detailed below, the enrollment projections should be recalculated. It is, in fact, recommended that the district update these projections regularly.

The enrollment projections are based on historical trends in the district. The projected enrollment is a reflection of stable incoming classes and gains and losses within grade transitions, paired with housing and non-public school factors. Enrollment projections are based on several assumptions, including continued migration patterns, maintained kindergarten-to-birth relationships and general demographics not experiencing extraordinary changes.

### A. PROJECTION METHODOLOGY

The *Cohort Survival Technique* was used to project the district's enrollment patterns for the next ten years. Three basic inputs were necessary:

1. Actual enrollment by grade for 2008 - 2018 for the district [Appendix A-1] and each school [Appendix A-7, A-9, A-11, A-14, A-15].
2. Grade-to-grade retention (migration) ratios for each two-grade transition to grades 1 - 12 for the past ten years for the district [Appendix A-1] and each school [Appendix A-7, A-9, A-11, A-14, A-15].
3. Projected kindergarten entering cohorts based on the number of live births in Nassau County five years before each year projected, with consideration given to town and school district births [Appendix A-3].

The *Cohort Survival Model* takes into consideration the normal community processes that affect school enrollment, which include:

1. The number of births and fertility rates
2. Normal in and out migration
3. Transfers to and from non-public schools
4. Population variations
5. Resident family characteristics



The enrollment projections contained within this report are based on assumptions generated through the demographic analysis. *This analysis led to the following assumptions:*

1. Population is expected to remain relatively stable due to limited new residential development. However, the increased turnover of existing housing could bring younger families into the district. The turnover of approximately 190 - 220 homes each year is anticipated to continue.
2. Future kindergarten classes are anticipated to be maintained at a level close to those seen during the historical period, relative to housing turnover and changes in population.
3. Non-public schools will continue to enroll approximately 9 - 11 percent of district resident students, as has been experienced in recent years.

The *Cohort Survival Model* is very accurate in forecasting future enrollment patterns, but the occurrence of certain conditions would warrant modifications in these projections. *These conditions include:*

- A level of new housing activity that is significantly higher or lower than that experienced by the district during the past three years.
- Expansion, consolidation, closing or the establishment of new non-public schools.
- Economic conditions that affect employment, finance, and housing in a manner dissimilar to the past three - five years.
- Sociological changes that reflect changed values or attitudes concerning family size and birthrate.
- Household characteristics that significantly differ from the past three - five years, including number of persons per household and age of household occupants.

It is important for the reader to understand the nature of enrollment projections. Regardless of the methodology employed to produce projections, *all outcomes fall into three categories of reliability:*

- |                     |   |
|---------------------|---|
| <i>Category 1 -</i> | Those projections based on students already enrolled in the system are the most reliable projections. |
| <i>Category 2 -</i> | Those projections based on documented births are slightly less reliable than those of Category 1.     |
| <i>Category 3 -</i> | Those projections based on estimates of future births are the least reliable.                         |

Therefore, the most reliable projections are those calculated for the periods closest in time. Projections for periods further out in time are less reliable, particularly those beyond five years from the year of the study. The five-year period (2019 - 2023) projections are those best used in district planning and decision-making. That is because this period consists mainly of Category 1 projections.

It is noted that the overall enrollment projections produced by Western Suffolk BOCES generally fall within a four percent margin of error. The greatest discrepancies in projections occur in the smallest subsets of those projections. For example, the projections for the district as a whole are likely to be the most accurate, and the projections of a particular grade level in a specific year are likely to be the least accurate. It is advised that updates to projections be continued on a periodic basis to maintain modifications warranted by subtle shifts in migration trends and demographic factors.

## B. GRADE - TO - GRADE RETENTION

The enrollment trends of the past ten years were analyzed, particularly the trend to lose or gain students in transition from one grade to the next. The *Cohort Survival Model* measures these trends through the analysis of “migration ratios” that compare the number of students at a particular grade level in a given year to the number of students at the next grade level in the following year. Migration ratios measure this relationship as a percent change. If the ratio is 100 percent, then no students were lost or gained in the transition between grades. A ratio of less than 100 percent would indicate that students were lost, and a ratio greater than 100 percent would reveal a gain between grades.

An analysis of migration ratios in the North Shore School District [Appendix A-1] revealed that on average, the district gains or maintains students in transition to most grades; however, average losses are noted to ninth grade as students leave the district to attend non-public schools. A review of each transition over the last ten years reflected fluctuating migrations, with variations accounted for by demographic factors, such as housing turnover, non-public school attendance and possible programmatic adjustments.

The transition trends in the district were analyzed and used to project enrollment. These ratios incorporate enrollment variables (housing, non-public school enrollment, population characteristics, birthrates, etc.) particular to the district. The development of trends is based on the demographic analysis presented in Section One. These ratios play an integral role in the enrollment projections, since the current grade enrollments are multiplied by them to project future grade level enrollments.

## C. PROJECTED ENTERING COHORTS

The application of migration ratios to the current grade enrollments cannot provide the entering kindergarten cohorts, since they are not yet in the system. The *Birth Persistence Method* views the number of live births five years earlier than each historical district kindergarten grade. The relationship between births and district kindergarten is then used to derive projected entering kindergarten cohorts. This method is considered highly reliable when accurate district census data are unavailable. The North Shore School District’s kindergarten enrollments were analyzed in comparison to the number of births in Nassau County, as well as the births within the school district [Appendix A-3].

New housing and housing turnover would normally bring younger women into the North Shore Central School District and subsequently increase the number of school-age children entering the district. This immigration affects the percentage of children born five years earlier in Nassau County that will enter the district. A weighted average historical kindergarten-to-birth ratio was applied against actual and estimated births in 2014 - 2023 to project the incoming district kindergarten for 2019 through 2028.

## D. DISTRICT ENROLLMENT

The North Shore Central School District educates students in grades K - 12 within five district facilities. The district's enrollment reflects the tendency to gain or maintain students in transition to most grades; the exception is ninth grade, where there are average losses of students in transition. These migration patterns reflect historical trends and influences from housing turnover, birthrate and non-public school factors. District enrollment is projected to remain stable during the next ten years, with an overall loss of two students expected by 2028.

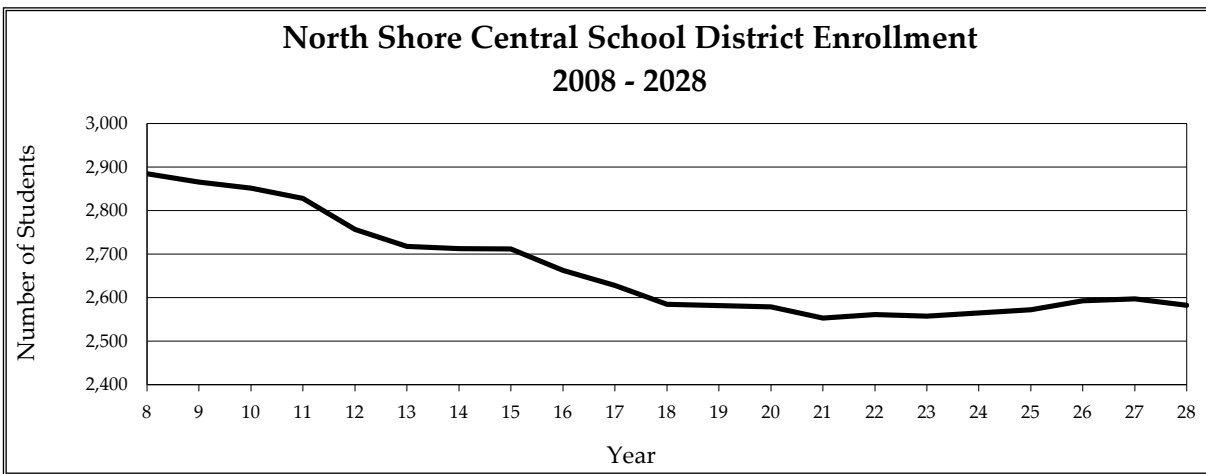


Figure 7 - North Shore Central School District, K - 12 Enrollment

District enrollment [Appendix A-1, A-4] consisted of 2,885 students in 2008; this was the historical peak enrollment. Subsequently, losses in nine of the last ten years led to the enrollment of 2,585 students in 2018. This represents a loss of 300 students, or 10.4 percent, during the historical period

Overall stability during the next ten years will lead to the forecasted 2028 enrollment of 2,583 students. This represents a loss of two students, when compared to the current enrollment.

*The projected enrollment can be attributed to several factors:*

- ☞ **First**, the kindergarten enrolled 156 - 228 students each year between 2008 and 2017. There are 152 kindergarten students enrolled in 2018. Enrollment is expected to remain relatively stable, ranging within 171 - 189 students between 2019 and 2028 [Appendix A-3].
- ☞ **Second**, the incoming kindergarten class has been smaller than the graduating twelfth grade class of the previous year in each of the last ten years. This trend is expected to continue during the projection period, with anticipated losses of between 7 - 55 students expected in each of the next ten years due to this displacement. However, these losses will be minimized by gains in migration [Appendix A-6].
- ☞ **Third**, migration ratios show year-to-year fluctuations. On average, the district gains or maintains students in transition to most grades; average losses are noted to ninth grade [Appendix A-1].
- ☞ **Fourth**, the average grade level size decreased in grades K - 9 during 2013 - 2018 as compared to 2008 - 2013. Grade level size decreases are anticipated in grades 5 - 12 during 2018 - 2023. Grade level size increases are anticipated in grades 4 - 10 during 2023 - 2028 [Appendix A-6].

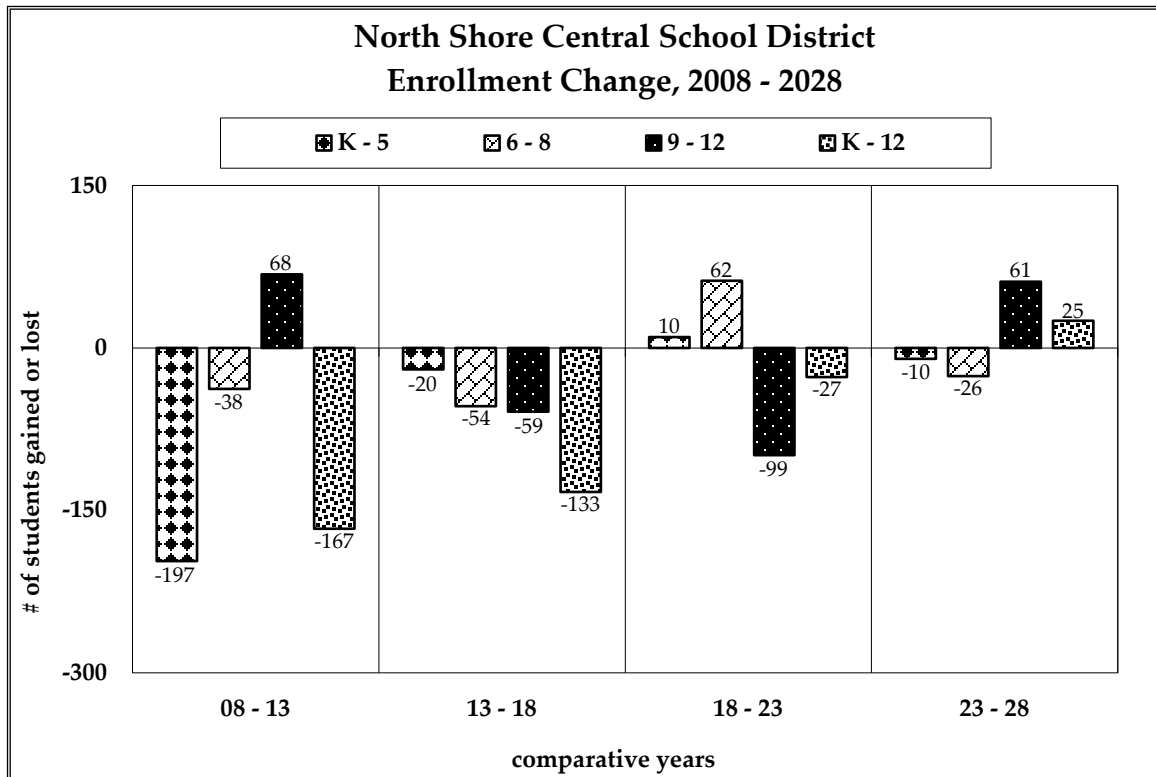


Figure 8 - North Shore Central School District Enrollment Change

As shown in Figure 8, enrollment in the North Shore Central School District has shown an overall loss of 300 students, or 10.4 percent, between 2008 and 2018. During the historical period, overall decreases were seen in the elementary (K - 5) and middle (6 - 8) grade configurations, while overall stability was seen in the high school (9 - 12) grades. During the first half of the projection period, the elementary grade configuration is expected to remain stable, the middle grades are expected to gain students and the high school grades are forecasted to lose students. During the latter half of the projection period, the elementary grade configuration is expected to remain stable, the middle grades are forecasted to lose students and the high school grades are forecasted to gain students. The projected 2028 enrollment of 2,583 students represents a loss of two students, when compared to current enrollment.

It is shown in Table 12 that the elementary (K - 5) grades are expected to be at their projection period peak enrollment in 2021, while the middle (6 - 8) and high school (9 - 12) grades are expected to enroll the greatest numbers of students in 2023 and 2019, respectively. District enrollment is expected to be at its projection period peak in 2027, when 2,597 K - 12 students are anticipated.

**Table 12 - Projected North Shore CSD Enrollment**

<b>Year</b>	<b>K - 5</b>	<b>6 - 8</b>	<b>9 - 12</b>	<b>Total K - 12</b>
<b>Actual 2018</b>	1,133	601	851	2,585
<b>Projected 2019</b>	1,164	576	842*	2,582
<b>2020</b>	1,176	580	823	2,579
<b>2021</b>	1,180*	602	771	2,553
<b>2022</b>	1,171	632	758	2,561
<b>2023</b>	1,143	663*	752	2,558
<b>2024</b>	1,165	628	772	2,565
<b>2025</b>	1,159	626	787	2,572
<b>2026</b>	1,155	601	837	2,593
<b>2027</b>	1,133	644	820	2,597*
<b>2028</b>	1,133	637	813	2,583

\* = denotes peak enrollment during 2019 - 2028

## E. ENROLLMENT OF GRADE CONFIGURATIONS

### ELEMENTARY GRADES (K - 5) ENROLLMENT *[Appendix A-2, A-5]*

The elementary enrollment consisted of 1,350 students in grades K - 5 in 2008; this was the historical peak enrollment. Subsequently, losses in seven of the last ten years led to the enrollment of 1,133 students in 2018. This represents a loss of 217 students, or 16.1 percent, during the historical period.

Enrollment is expected to fluctuate, but overall remain stable. The forecasted 2028 enrollment of 1,133 students represents the same number of students as are currently enrolled.

Table 13 presents the current and projected enrollment through 2028 for the district's three elementary schools. It is shown that Glen Head Elementary School is forecasted to be at its projection period peak enrollment in 2024, while Glenwood Landing and Sea Cliff Elementary Schools are expected to enroll the greatest numbers of students in 2020 and 2022, respectively.

**Table 13 - Projected North Shore CSD Elementary Enrollment**

Year	Glen Head	Glenwood Landing	Sea Cliff	Total (K - 5)
<b>Actual 2018</b>	353	439	341	1,133
<b>Projected 2019</b>	364	447	353	1,164
<b>2020</b>	366	460*	350	1,176
<b>2021</b>	367	457	356	1,180*
<b>2022</b>	363	446	362*	1,171
<b>2023</b>	355	450	338	1,143
<b>2024</b>	370*	445	350	1,165
<b>2025</b>	368	440	351	1,159
<b>2026</b>	365	435	355	1,155
<b>2027</b>	361	427	345	1,133
<b>2028</b>	361	427	345	1,133

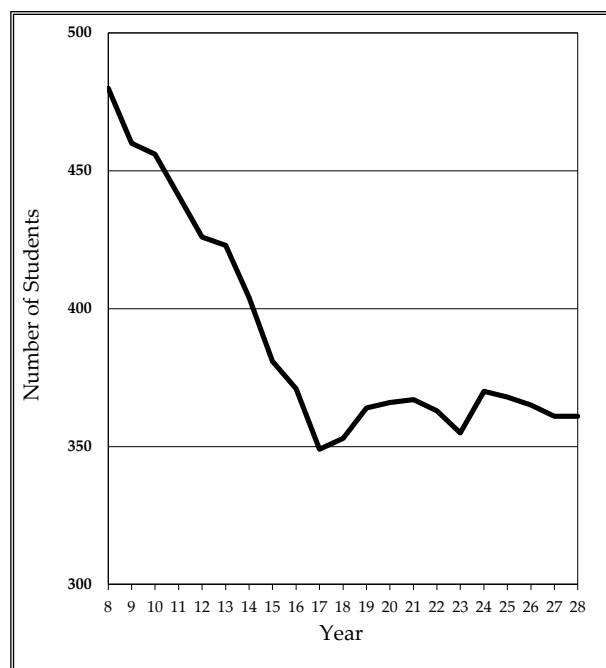
\*= denotes peak enrollment during 2019 - 2028

## **Glen Head Elementary School**

*[Appendix A-7, A-8]*

Glen Head Elementary School enrolled 480 students in grades K - 5 in 2008; this was the historical peak enrollment. Subsequently, losses in nine of the last ten years led to the enrollment of 353 students in 2018. This represents a loss of 127 students, or 26.5 percent, during the historical period.

Enrollment is expected to remain stable during the next ten years. The forecasted 2028 enrollment of 361 students represents a gain of eight students, when compared to the current enrollment. It is anticipated that the kindergarten enrollment will range between 55 - 59 students per year and will average approximately 32 percent of the district's kindergarten population.



*Figure 9 - Glen Head ES Enrollment, 2008 - 2028*

This school displays the average trend to gain students in progression to grades 1 - 4 and maintain students in progression to fifth grade. However, the entering kindergarten class is expected to be smaller than the exiting fifth grade class of the previous year in eight of the next ten years, minimizing the gains occurring through transition. These factors will result in the projected enrollment pattern.

This school currently houses seventeen (17) sections for the instruction of 2 - 3 sections per grade level. The average section size for this school is 20.8 students, ranging from an average of 18.0 students in fifth grade to 21.5 students in kindergarten. Enrollment projections suggest the need for 18 - 20 instructional sections throughout the projection period, in order to maintain maximum class sizes of 22 students per section in grades K - 5.

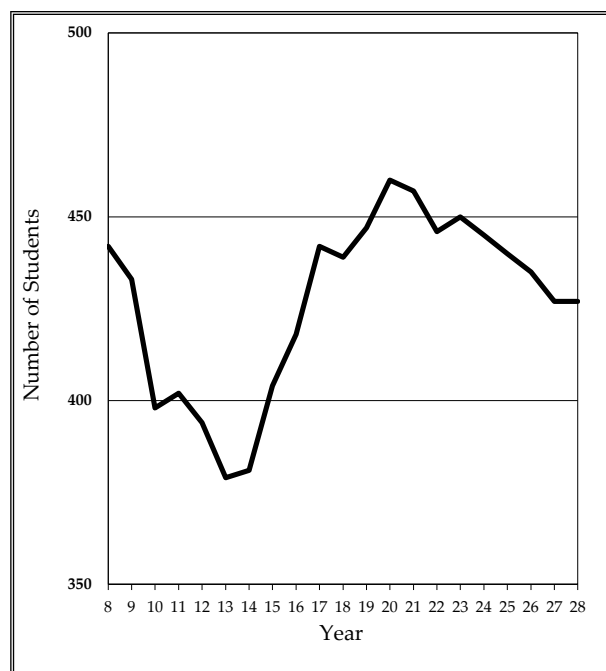


## **Glenwood Landing Elementary School**

*[Appendix A-9, A-10]*

Glenwood Landing Elementary School enrolled 442 students in grades K - 5 in 2008; this was the historical peak enrollment, which recurred in 2017. Subsequently, a loss this year resulted in the enrollment of 439 students in 2018. This represents a loss of three students, during the historical period.

Enrollment is expected to remain stable during the next ten years. The forecasted 2028 enrollment of 427 students represents a loss of twelve students, when compared to the current enrollment. It is anticipated that the kindergarten enrollment will range between 62 - 67 students per year and will average approximately 37 percent of the district's kindergarten population.



*Figure 10 - Glenwood Landing ES Enrollment, 2008 - 2028*

This school displays the average trend to gain students in progression to grades 1 - 5. However, the entering kindergarten class is expected to be smaller than the exiting fifth grade class of the previous year in each of the next ten years, minimizing the gains occurring through transition. These factors will result in the projected enrollment pattern.

This school currently houses twenty-seven (27) sections for the instruction of 3 - 4 sections per grade level, and four sections of self-contained special education. The average section size for this school is 19.2 students, ranging from an average of 16.5 students in kindergarten to 20.7 students in first grade. Enrollment projections suggest the need for 27 - 29 instructional sections, including four sections of self-contained special education, throughout the projection period, in order to maintain maximum class sizes of 22 students per section in grades K - 5.

## **Sea Cliff Elementary School**

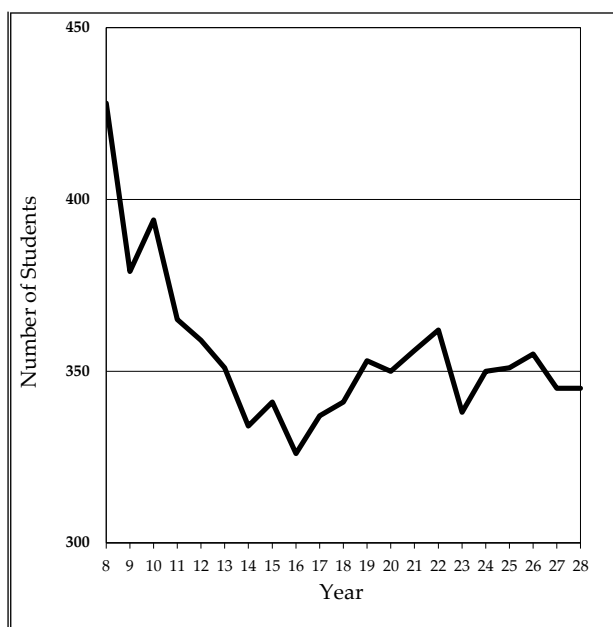
*[Appendix A-11, A-12]*

Sea Cliff Elementary School enrolled 428 students in grades K - 5 in 2008; this was the historical peak enrollment. Subsequently, losses in six of the last ten years led to the enrollment of 341 students in 2018. This represents a loss of 87 students, or 20.3 percent, during the historical period.

Enrollment is expected to remain stable during the next ten years. The forecasted 2028 enrollment of 345 students represents a gain of four students, when compared to the current enrollment. It is anticipated that the kindergarten enrollment will range between 52 - 63 students per year and will average approximately 31 percent of the district's kindergarten population.

This school displays the average trend to gain students in progression to grades 1 - 5. However, the entering kindergarten class is expected to be smaller than the exiting fifth grade class of the previous year in eight of the next ten years, minimizing the gains occurring through transition. These factors will result in the projected enrollment pattern.

This school currently houses nineteen (19) sections for the instruction of 3 - 4 sections per grade level. The average section size for this school is 17.9 students, ranging from an average of 14.3 students in kindergarten to 20.3 students in both third and fourth grades. Enrollment projections suggest the need for 18 - 19 instructional sections throughout the projection period, in order to maintain maximum class sizes of 22 students per section in grades K - 5.



*Figure 11 - Sea Cliff ES Enrollment, 2018 - 2028*

## ELEMENTARY INSTRUCTIONAL SECTIONS

The current and projected need for elementary instructional sections is presented in Table 14. These needs are based on a maximum of 22 students per section.

It is shown that the district currently houses 63 sections for the instruction of grades K - 5, including four sections of self-contained special education. The projected K - 5 enrollment suggests the need for 63 - 68 sections during the projection period, including four sections of self-contained special education. When compared to the current allocation of sections (63), it is projected that the district will require one additional section next year and the same allocation of sections in 2028 [Appendix A-13].

**Table 14 - Projected North Shore CSD Elementary Instructional Sections**

Year	Glen Head	Glenwood Landing	Sea Cliff	Total (K - 5)
<b>Actual</b> 2018	17	27	19	63
<b>Projected</b> 2019	18	28	18	64
2020	20	27	19	66
2021	20	29	19	68
2022	19	27	19	65
2023	18	27	18	63
2024	19	27	19	65
2025	19	27	19	65
2026	19	27	19	65
2027	18	27	18	63
2028	18	27	18	63

## MIDDLE GRADES (6 - 8) ENROLLMENT *[Appendix A-2, A-5]*

### North Shore Middle School

*[Appendix A-14]*

North Shore Middle School enrolled 693 students in grades 6 - 8 in 2008. Gains in each of the next two years resulted in the historical peak enrollment of 739 students in 2010. Subsequently, losses in seven of the last eight years led to the enrollment of 601 students in 2018. This represents a loss of 92 students, or 13.3 percent, during the historical period.

Enrollment is expected to fluctuate, but overall increase to the forecasted 2028 enrollment of 637 students. This represents a gain of 36 students, or 6.0 percent, when compared to the current enrollment.

This school displays the average trend to gain students in progression to seventh grade and maintain students in progression to eighth grade. The entering sixth grade class is expected to be smaller than the exiting eighth grade class of the previous year in five of the next ten years. These factors will result in the projected enrollment pattern.

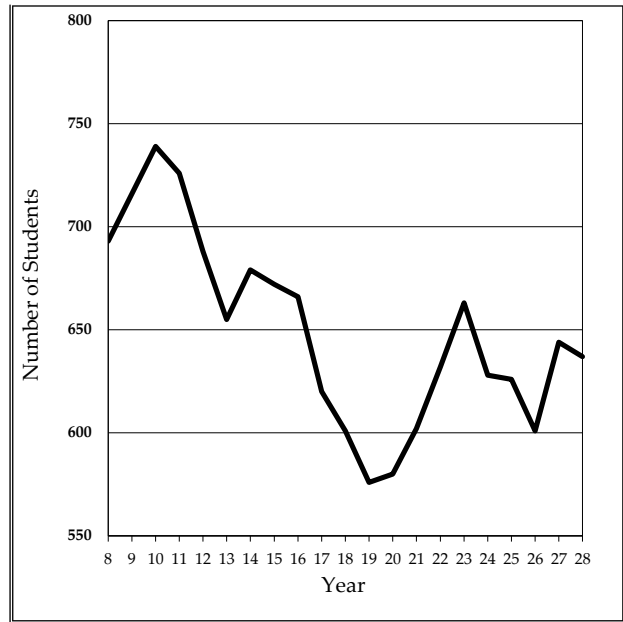


Figure 12 - North Shore MS Enrollment, 2008 - 2028

## SECONDARY GRADES (9 - 12) ENROLLMENT *[Appendix A-2, A-5]*

### North Shore Senior High School

*[Appendix A-15]*

North Shore Senior High School enrolled 842 students in grades 9 - 12 in 2008. Gains in four of the next six years resulted in the historical peak enrollment of 915 students in 2014. Subsequently, losses in each of the last four years led to the enrollment of 851 students in 2018. This represents a gain of nine students, during the historical period.

Decreases are expected in seven of the next ten years, leading to the forecasted 2028 enrollment of 813 students. This represents a loss of 38 students, or 4.5 percent, when compared to the current enrollment.

This school displays the average trend to gain students in progression to eleventh and twelfth grades and maintain students in progression to tenth grade. The entering ninth grade class is expected to be smaller than the exiting twelfth grade class of the previous year in seven of the next ten years. These factors will result in the projected enrollment pattern.

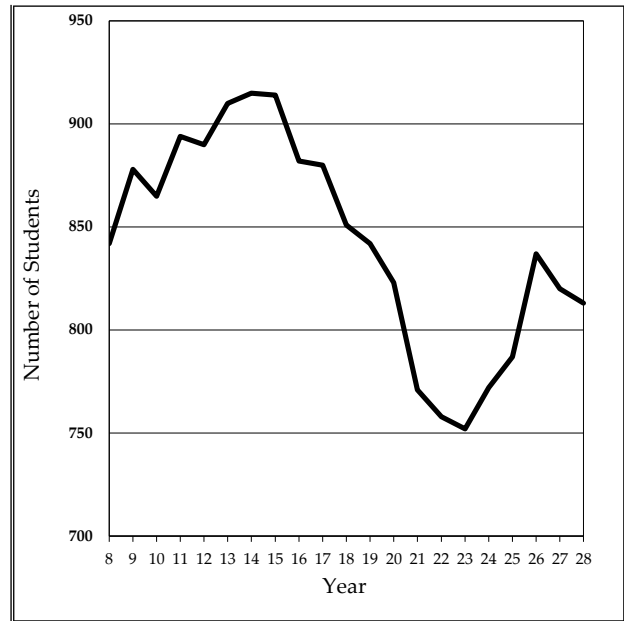


Figure 13 - North Shore Senior HS Enrollment, 2008 - 2028

Table 15 displays the current and projected middle and high school enrollments for the North Shore Central School District. It is shown that North Shore Middle School is expected to be at its projection period peak enrollment in 2023, while North Shore Senior High School is expected to enroll the greatest number of students in 2019. The combined middle and high school enrollment is expected to be at its peak in 2027, when 1,464 students are anticipated. This is an increase of 12 students, when compared to the current enrollment.

**Table 15 - Projected North Shore CSD Middle and High School Enrollment**

Year		North Shore MS (6 - 8)	North Shore HS (9 - 12)	TOTAL (6 - 12)
<b>Actual</b>	<b>2018</b>	601	851	1,452
<b>Projected</b>	<b>2019</b>	576	842*	1,418
	<b>2020</b>	580	823	1,403
	<b>2021</b>	602	771	1,373
	<b>2022</b>	632	758	1,390
	<b>2023</b>	663*	752	1,415
	<b>2024</b>	628	772	1,400
	<b>2025</b>	626	787	1,413
	<b>2026</b>	601	837	1,438
	<b>2027</b>	644	820	1,464*
	<b>2028</b>	637	813	1,450

\*denotes peak enrollment during 2019 - 2028

# Facilities Analysis

*The objective of this section of the study is to analyze instructional space and the operating capacity for each educational facility in the North Shore Central School District.*

The analysis of instructional space was accomplished by a thorough study of each building's unique features and program offerings. Detailed information, including room size in square feet and room use, was provided by district administrators of the North Shore Central School District.

## A. FACILITY ANALYSIS METHODOLOGY

The following information was used in conjunction with actual 2018-19 enrollment and the projected enrollment in order to determine present building usage as well as future needs:

- a. **Room usage and type** - categories include but are not limited to: general instruction, special education, support programs, art, music, computer, science, office space, etc.
- b. **Square footage** of each room.
- c. **Class size guidelines or practices** - based on the review of contractual class size guidelines or current practice along with State Education Department (SED) guidelines.

**It should be noted that a maximum class size of 22 students was used in determining sectional needs and room capacities for grades K - 12.**

Classroom capacities can be tempered by square footage. Actual room capacities were based on programmatic usage of each room and were calculated using the allocation of a minimum of 33 square feet per kindergarten student, 29 square feet per student in grades 1 - 5, 26 square feet per student in grades 6 - 12, and at least 51 square feet per special education student. It is noted that specialized instruction areas require more space allocation, such as science (30 square feet per student), computer labs (35 square feet per student), art (45 square feet per student), home/careers (50 square feet per student) and technology (75 square feet per student).

The standard size of a general education classroom is 770 square feet, although the *New York State Education Department* includes rooms of 550 square feet in building capacity rating. While schools do use some rooms under 770 square feet as instructional space, some schools also use rooms under 550 square feet for grade level, support or core academic classes.

The analysis of each building included space designed for instructional use and spaces currently used for office, storage, or special purposes. Spaces that were physically altered were also considered. It is noted that instructional spaces less than 550 square feet in each district school were not considered in the analysis, unless such spaces are currently being used for core/grade level classes or large group support room space.

## B. OPERATING CAPACITY

The State Education Department defines operating capacity as, *“the total number of students the building can reasonably and efficiently house based on the district’s educational program and class size policy, and the number, size and current use of rooms as represented on approved plans. The operating capacity of a building is computed using the space standards established by the Commissioner modified by any differences due to the district’s educational program and/or class size policy.”* It is noted that capacity is based on State Education Department guidelines used for new construction. They do not mandate that the district follow these guidelines within existing structures. However, they are used in this study as a benchmark for defining equal square footage allowances per student reflecting programmatic needs. The operating capacities of all schools include the sum of room capacities of all rooms that contain at least 550 square feet, with the exceptions noted above. The core/common spaces, non-instructional, and office spaces were not included.

The functional and efficient operation of each facility must be viewed in the context of an optimal operational range that allows for support program space, realistic enrollment of students at each grade level, incorporation of students with special needs, optimal class size load, programmatic considerations, and scheduling flexibility. The reallocation of rooms and classes would affect capacity ratings. It is important to note that the actual enrollment by grade in each school will not conform to the available number of seats in each grade level or special education classroom. Therefore, **it would be unrealistic to expect utilization levels to be at 100 percent of capacity.**

The North Shore Central School District educates students in grades K - 12 within five district facilities. Grades K - 5 are housed in Glen Head, Glenwood Landing and Sea Cliff Elementary Schools; grades 6 - 8 are housed at North Shore Middle School; and grades 9 - 12 are housed at North Shore Senior High School. The operational capacities of each facility are listed in the following table.

Table 16 - North Shore CSD Facility Utilization - 2018-19

Facility	Grades	Operational* Capacity	2018-19 Operational Capacity Utilization
Glen Head ES	K - 5	495	71%
Glenwood Landing ES	K - 5	547	80%
Sea Cliff ES	K - 5	473	72%
North Shore MS	6 - 8	727	83%
North Shore Senior HS	9 - 12	1,046	81%

\*Operational capacities derived from a maximum class size of 22 students for grades K - 12.



## C. SPACE ALLOCATION

### 1. Elementary (grades K - 5) Allocation of Space

The district elementary program, housed within three buildings, consists of educational programs for grades K - 5. Table 17 lists rooms of 550 square feet or larger used for classroom instruction and support programs.

1. *Glen Head Elementary School* (grades K - 5) contains 30 rooms of at least 550 square feet, with three of these rooms containing 900 or more square feet.
2. *Glenwood Landing Elementary School* (grades K - 5) contains 35 rooms of at least 550 square feet, with one of these rooms containing 900 or more square feet.
3. *Sea Cliff Elementary School* (grades K - 5) contains 29 rooms of at least 550 square feet, with four of these rooms containing 900 or more square feet.

The schools also contain the following core/common facilities:

1. Library
2. Cafeterias
3. Gymnasium
4. Stage area/Auditorium

Table 17 - Elementary School Classrooms by Size

Elementary School	Size of Room (in Square Feet)			
	550 - 769	770 - 899	900+	Total Over 550
Glen Head ES	19	8	3	30
Glenwood Landing ES	17	17	1	35
Sea Cliff ES	14	11	4	29
Total Elementary	50	36	8	94

Elementary space allocation is presented in the following table. All rooms containing at least 550 square feet were considered to have the potential for general instructional or support use, as per State Education Department guidelines. Support programs provided in rooms of at least 550 square feet include art, music, computer lab, Academic Intervention Services (AIS) for reading and mathematics, English as a New Language (ENL), music, resource room, special education support room, Science, Technology, Engineering, Art and Mathematics (STEAM), School Wide Enrichment Services (SWES), Foreign Language in the Elementary Schools (FLES - for Mandarin and Spanish), Reading/Speech, Occupational Therapy (OT), and Physical Therapy (PT).

**Table 18 - Elementary Instructional Space Dedication Rooms Greater than 550 Square Feet**

<b>Elementary School</b>	<b>General (with SC SPED)</b>	<b>Support</b>	<b>Other Usage*</b>	<b>Total Rooms</b>
<b>Glen Head ES</b>	17	9	4	30
<b>Glenwood Landing ES</b>	27	8	0	35
<b>Sea Cliff ES</b>	19	9	1	29
<b>Total Elementary</b>	63	26	5	94

\*Rooms used for OT/PT, behavior consultant, makerspace, speech & multi-purpose room

The elementary schools also contain small spaces that are used for small group instructional support programs in areas that include, but are not limited to, resource room, reading, ENL, FLES, AIS, special education support and music (including lessons).

*It should be noted that only those rooms that are dedicated for instructional use were considered in the analysis within the following section. It was assumed that the dedication of space for offices, faculty, and storage would continue.*

## **Glen Head Elementary School**

Glen Head Elementary School provides instructional spaces for students in grades K - 5. There are a total of 30 teaching spaces greater than 550 square feet; 17 rooms are used for grade level instruction, nine rooms are used for instructional support, and four rooms are used for other purposes.

- ∞ The **seventeen (17) instructional rooms** used for grades K - 5 each contain 658 - 1,111 square feet.
- ∞ **Nine (9) support rooms** are used for AIS Math (1), art (1), computer lab (1), ENL (1), FLES program (2), music (1), STEAM (1) and SWES Enrichment Program (1). These rooms contain 643 - 1,114 square feet.
- ∞ **Four (4) other usage rooms** are used for Behavior Consultant, Makerspace, OT/PT and speech. These rooms contain 614 - 770 square feet.
- ∞ The core facilities consist of five (5) spaces, as follows:
  - A **gymnasium** used for physical education classes.
  - A **library** used for reference and instruction.
  - **Cafeteria** used for lunches.
  - **Auditorium** used for band/orchestra rehearsals, multipurpose room and indoor play.
  - **Stage** area
- ∞ The non-instructional spaces housed in this school include administrative and health offices, office space for the psychologist and social worker, faculty lounge, faculty restroom/lactation room, kiln room/clay storage, kitchen, custodial break room/shop area, boiler room and storage areas.

*Glen Head Elementary School* operated at **71 percent** of the operational capacity of **495** students during the 2018-19 school year, when district class size guidelines and practice were applied [Appendix D-1, D-2, D-3, D-4].

## **Glenwood Landing Elementary School**

Glenwood Landing Elementary School provides instructional spaces for students in grades K - 5. There are a total of 35 teaching spaces greater than 550 square feet; 23 rooms are used for grade level instruction, four rooms are used for self-contained special education and eight rooms are used for support programs.

- ∞ The **twenty-seven (27) instructional rooms** used for grades K - 5 and self-contained special education each contain 548 - 863 square feet.
- ∞ **Eight (8) support rooms** are used for art (1), computer lab (1), ENL/OT/PT (1), FLES/STEAM/SWES programs (1), music (3) and reading/speech (1). These rooms contain 592 - 905 square feet.
- ∞ The core facilities consist of six (6) spaces, as follows:
  - A **gymnasium** used for physical education classes.
  - A **library** used for reference and instruction, professional development and AIS Mathematics.
  - **Cafeteria** used for lunches.
  - **Auditorium** used for indoor recess and presentations.
  - **Auditorium Lobby** used for indoor recess.
  - **Stage** area
- ∞ The non-instructional spaces housed in this school include administrative and health offices, offices for the behavioral consultant, psychologist and social worker, faculty lounge/work room, lactation room, kiln room/clay storage, kitchen, mechanical room, custodial rooms and storage areas.

*Glenwood Landing Elementary School* operated at **80 percent** of the operational capacity of **547** students during the 2018-19 school year, when district class size guidelines and practice were applied [Appendix D-5, D-6, D-7, D-8].

## Sea Cliff Elementary School

Sea Cliff Elementary School provides instructional spaces for students in grades K - 5. There are a total of 29 teaching spaces greater than 550 square feet; 19 rooms are used for grade level instruction, nine rooms are used for support programs, and one room is used for other purposes..

- ∞ The **nineteen (19) instructional rooms** used for grades K - 5 each contain 634 - 987 square feet.
- ∞ **Nine (9) support rooms** are used for AIS Math (1), art (1), computer lab (1), Foreign Language - Mandarin (1), music (1), reading (2), STEAM Lab (1) and SWES program (1). These rooms contain 560 - 939 square feet.
- ∞ **One (1) other usage room** is used for a multi-purpose classroom. This room contains 575 square feet.
- ∞ The core facilities consist of eight (8) spaces, as follows:
  - **Auditorium** used for assemblies and indoor recess during inclement weather.
  - An **auditorium balcony** used for grade 5 students for school assembly programs.
  - An **auditorium lobby** used for indoor recess during inclement weather.
  - An **auditorium stage** used indoor recess during inclement weather.
  - A **gymnasium** used for physical education classes.
  - A **gymnasium lobby**.
  - A **library** used for reference and instruction.
  - **Cafeteria** used for lunches.
- ∞ The non-instructional spaces housed in this school include administrative and health offices, district offices, offices for the behavioral consultant, psychologist, social worker and speech therapists, OT/PT, PE Wellness, conference room for special education, copy rooms, faculty lounge/work room, lactation room, kiln room/clay storage, kitchen, custodial workshop and office, boiler room and storage areas.

∞

*Sea Cliff Elementary School* operated at **72 percent** of the operational capacity of **473** students during the 2018-19 school year, when district class size guidelines and practice were applied [*Appendix D-9, D-10, D-11, D-12*].

## 2. Elementary Instructional Sections and Average Class Sizes

As shown in the table below, the district houses 63 sections for grades K - 5, during the 2018-19 school year, including four sections of self-contained special education.

**Table 19 - 2018-19 Elementary Instructional Sections**

School	K	1st	2nd	3rd	4th	5th	SPED	Total
Glen Head ES	2	3	3	3	3	3	0	17
Glenwood Landing ES	4	3	4	4	4	4	4	27
Sea Cliff ES	3	4	3	3	3	3	0	19
<b>Total</b>	9	10	10	10	10	10	4	63

As shown in the following table, district average grade level sizes range from 17.4 students in kindergarten to 20.7 students in third grade.

**Table 20 - 2018-19 Average Elementary Class Sizes**

School	K	1st	2nd	3rd	4th	5th	School Average
Glen Head ES	21.5	21.3	21.3	21.3	21.3	18.0	20.8
Glenwood Landing ES	16.5	20.7	20.0	20.5	17.8	19.5	19.2
Sea Cliff ES	14.3	19.0	17.3	20.3	20.3	16.0	17.9
<b>Grade Level Average</b>	17.4	20.3	19.6	20.7	19.8	17.8	19.3 (district average)

Note: Self-contained special education students at Glenwood Landing are included in the grade level counts; therefore, average class sizes shown may be inflated.

## 3. Allocation of Space for Elementary Support Programs

The support programs offered to North Shore Central School District's elementary students include art, music, Academic Intervention Services (AIS) for reading and mathematics, instruction for English as a New Language (ENL), Science, Technology, Engineering, Art and Mathematics (STEAM), School Wide Enrichment Services (SWES), Foreign Language in the Elementary Schools (FLES - for Mandarin and Spanish), resource room, speech services, occupational and physical therapy, psychologist services, and social worker services. In addition, self-contained special education programs are assigned to Glenwood Landing Elementary School.

As shown in the following table, the square footage allocated to support programs varies. It should be noted that the size of the instructional group, as well as the materials and equipment associated with the art and music programs, makes a full-size or oversized classroom the optimum environment for the delivery of their curriculum. In contrast, programs such as reading/math support and speech can be conducted in smaller spaces due to the number of students in the instructional group. At the present time, North Shore Central School District elementary schools utilize some classroom-sized spaces (at least 550 square feet) for support programs in its buildings. It also should be noted that the State Education Department suggests that small rooms (designated as containing about 200 square feet) be set aside for support room space.

**Table 21 - 2018-19 Allocation of Space in Square Feet - Elementary Support Programs/Services**

	Glen Head ES	Glenwood Landing ES	Sea Cliff ES
AIS Math	669 sf	546 sf☆	635 sf
AIS Reading	129 sf, 191 sf, 193 sf	-	
Art	1,114 sf	905 sf	939 sf
Behavioral Consultant	614 sf	232 sf	214 sf✕
Computer Lab	778 sf	604 sf	560 sf
ENL	742 sf	598 sf*	178 sf
FLES Program	686 sf, 664 sf	764 sf**	726 sf, 471 sf
Literacy Coach	-	546 sf✕	
Makerspace	770 sf	-	
Music	764 sf, 466sf, 350 sf, 371 sf, 257 sf	592 sf, 792 sf, 835 sf, 297 sf, 223 sf	592 sf, 213 sf, 174 sf, 501 sf
OT/PT	692 sf	598 sf*	397 sf, 214 sf✕
PE Wellness			214 sf✕
Psychologist	183 sf	371 sf	256 sf
Reading	-	656 sf♦, 546 sf✕	781 sf, 569 sf
Resource Room	236 sf	546 sf☆	181 sf
Self-Contained Special Education	-	755 sf, 837 sf, 756 sf, 634 sf	
Social Worker	131 sf	164 sf	203 sf
Special Education Support Room	-	-	230 sf
Speech	694 sf	656 sf♦	215 sf, 196 sf
STEAM	668 sf	764 sf**	652 sf
SWES Program	643 sf	764 sf**, 296 sf	927 sf

\*shared ENL/OT/PT

\*\*shared FLES/STEAM/SWES Programs

♦shared Reading/Speech

☆shared AIS Math/Literacy Coach/Reading/Resource Room

✕shared OT/Behavioral/PE Wellness

#### 4. Intermediate, Middle and High School Allocation of Space

Students in the North Shore Central School District in grades 6 - 8 attend *North Shore Middle School* and students in grades 9 - 12 attend *North Shore Senior High School*. The intermediate, middle and secondary space allocation of rooms that contain 550 square feet or more is presented in the next table.

School spaces are divided into the following three categories for the purposes of this report:

- a. **Interchangeable Rooms** - rooms that are designed as classrooms - without specialized equipment - that can be used for teaching a variety of subjects. Interchangeable rooms have the greatest flexibility for alternative scheduling.
- b. **Specialized Rooms** - rooms that are designed to meet specific program needs, including specialized equipment or design (i.e., wiring for computer labs, science lab equipment, home/careers equipment, technology labs, art studios, music labs).
- c. **Core Facilities** - rooms that are designed to meet specific purposes, such as the cafeteria, auditorium, gymnasium, and library. These spaces are generally larger than instructional classrooms to meet the needs of a larger group.

The *New York State Education Department* guidelines for specialized rooms in secondary schools are indicated below. These guidelines, which are mandated for new construction, were used as a benchmark for establishing suggested programmatic space allocations. The space allocations are as follows:

- **Technology** - 840 to 2,000 square feet suggested, program dependent
- **Computer/Business** - 840 - 1,000 square feet suggested
- **Home/Careers** - 1,200 square feet suggested
- **General Science** - 1,000 square feet suggested
- **Laboratory Science** - 1,200 square feet suggested
- **Music** - 1,200 to 1,400 square feet suggested
- **Art** - 1,200 square feet suggested
- **Physical Education** - Gymnasium
  - 1-station suggested for enrollment up to 500 students
  - 2-stations suggested for up to 1,000 students
  - 3-stations suggested for up to 1,500 students
  - 4-stations suggested for up to 2,000 students



**Table 22 - 2018-19 Middle and Secondary Instructional Space**

	North Shore MS	North Shore Senior HS
<b>Rooms &lt; 550 square feet</b>	2	1
<b>Rooms &gt; 550 square feet</b>	42	60
<b>Total Instruction Space/Rooms:</b>	44	61
<b>Interchangeable Rooms</b>	23	27
<b>Specialized Rooms:</b>	21	34
<b>Art</b>	2	2
<b>Computer Lab</b>	1	4
<b>FACS Room/Home &amp; Careers</b>	1	1
<b>Makerspace</b>	1♦	-
<b>Math Center</b>	-	1
<b>Music</b>	2	4
<b>Photography</b>	-	1
<b>Physical Education</b>	3	8
<b>Science Lab</b>	10*	10
<b>Self-Contained Special Education/Life Skills</b>	-	1
<b>Technology</b>	1☆	1
<b>Wood Shop</b>	-	1

\*two rooms also include STEAM and/or Health

♦includes Technology

☆includes STEAM/Woodshop

The *New York State Education Department* designates a 3,168 square foot gymnasium as a one-station gym for secondary student populations of up to 500 students. For each additional 500 students, an additional station of 1,872 is required. The *New York State Education Department* designates 5,040 square feet for a two-station gym, 6,912 square feet for a three-station gym, and 1,872 square feet for each additional station. There are three physical education stations at the North Shore Middle School and there are eight physical education stations, including a weight room and wrestling room, at North Shore Senior High School.

## **North Shore Middle School**

North Shore Middle School provides instructional services for students in grades 6 - 8. There are a total of 44 teaching spaces in this facility; all but two are greater than 550 square feet. Twenty-three of the teaching spaces are interchangeable rooms and twenty-one are specialized spaces.

- ∞ The **twenty-three (23) interchangeable rooms** are used for core subject/grade level instruction, self-contained special education, Learning Other Than English (LOTE) and English as a New Language (ENL). These rooms range in size from 547 - 1,028 square feet.
- ∞ **Twenty-one (21) specialized rooms** are designed to accommodate space and specialized equipment needed to meet specific programmatic requirements. These rooms are designed for programs that include art (2), computer lab (1), Family and Consumer Science (1), Makerspace (1), music (2), physical education (3), science labs (10) and technology (1). These rooms contain 540 - 6,544 square feet.
- ∞ The core/common facilities consist of four (4) spaces, as follows:
  - A **gymnasium** used for physical education classes (approximately 3 stations).
  - A **library** used for reference and instruction.
  - A **cafetorium** used for lunches and assemblies.
  - A **stage** used for rehearsals.
- ∞ The non-instructional spaces housed in this school include administrative and health offices, offices for coaches, counselors, psychologists, social workers, speech services and technology help center/account clerk, test center, faculty rooms, lactation room, conference rooms, copy rooms, CSE meeting room, discipline room, kitchen, locker rooms, custodial area, mechanical room, boiler room and storage areas.

*North Shore Middle School* operated at **83 percent** of the operational capacity of **727** students during the 2018-19 school year, when scheduling flexibility was applied [*Appendix D-13, D-14, D-15, D-16*].

## **North Shore Senior High School**

North Shore Senior High School provides instructional services for students in grades 9 - 12. There are a total of 61 teaching spaces in this facility; all but one room is greater than 550 square feet. Twenty-seven of the teaching spaces are interchangeable rooms and 34 are specialized spaces.

- ∞ The **twenty-seven (27) interchangeable rooms** are used for core subject/grade level instruction,. These rooms range in size from 586 - 1,066 square feet.
- ∞ **Thirty-four (34) specialized rooms** are designed to accommodate space and specialized equipment needed to meet specific programmatic requirements. These rooms are designed for programs that include art (2), computer labs (4), Home & Careers (1), Math Center (1), music (4), photography (1), physical education (8), science labs (10), Self-Contained Special Education - Life Skills (1), Technology (1), and Wood Shop (1). These rooms contain 330 - 10,176 square feet.
- ∞ The core/common facilities consist of six (6) spaces, as follows:
  - Two **gymnasiums** used for physical education classes (approximately six stations, not including a weight room and wrestling room).
  - A **library** used for reference and instruction.
  - A **cafeteria** used for lunches.
  - A **school store**.
  - An **auditorium/theater** used for large group gatherings and theater production.
  - An **auditorium/theater lobby** used for senior pictures.
- ∞ The non-instructional spaces housed in this school include offices for district administration, school administrative, guidance, curricula and health offices, office space for the psychologist and social workers, accounting, attendance, choral, community service, district IT, district performing arts, food service, woodshop, science prep, student store, trainer's room, conference/meeting rooms, copy rooms, photography rooms, faculty rooms, gallery, kiln room, kitchen, locker rooms, NOC room, custodial rooms, electric gear room, boiler room and storage areas.

*North Shore Senior High School* operated at **81 percent** of the operational capacity of **1,046** students during the 2018-19 school year, when scheduling flexibility was applied [*Appendix D-17, D-18, D-19, D-20, D-21, D-22, D-23*].

## D. FUTURE FACILITIES ANALYSIS

The range of projected enrollment and operational utilization in each facility is presented in the next two tables:

**Table 23 - Projected School Enrollment Range 2019 - 2028**

Facility	2018 Enrollment	Peak Enrollment	Peak Year	Lowest Enrollment	Lowest Year
Glen Head ES	353	370	2024	355	2023
Glenwood Landing ES	439	460	2020	427	2027 & 2028
Sea Cliff ES	341	362	2022	338	2023
North Shore MS	601	663	2023	576	2019
North Shore Senior HS	851	842	2019	752	2023

**Table 24 - Facility Utilization Range 2019 - 2028**

Facility	Operational Capacity	Peak Utilization	Peak Year	Lowest Utilization	Lowest Year
Glen Head ES	495	75%	2024	72%	2023
Glenwood Landing ES	547	84%	2020 & 2021	78%	2027 & 2028
Sea Cliff ES	473	77%	2022	71%	2023
North Shore MS	727	91%	2023	79%	2019
North Shore Senior HS	1,046	80%	2019 & 2026	72%	2022 & 2023

**Glen Head Elementary School:** capacity utilization is anticipated to range between 72 and 75 percent in the years 2019 through 2028.

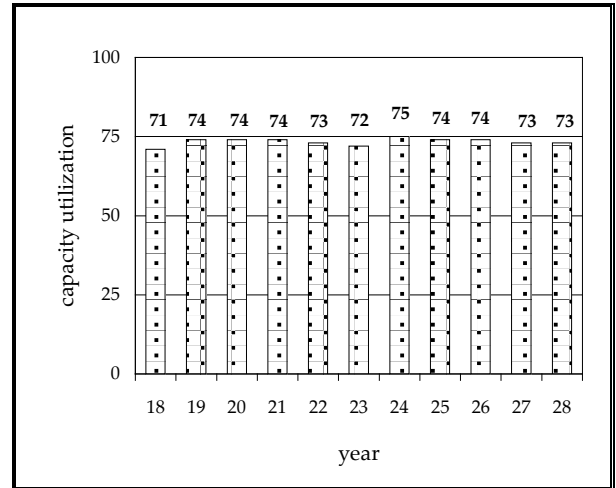


Figure 14 - Glen Head ES  
Capacity Utilization Level

**Glenwood Landing Elementary School:** capacity utilization is anticipated to range between 78 and 84 percent in the years 2019 through 2028.

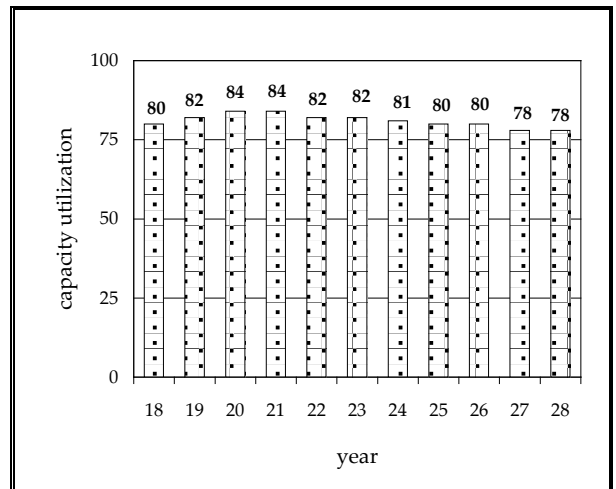


Figure 15 - Glenwood Landing ES  
Capacity Utilization Level

**Sea Cliff Elementary School:** capacity utilization is anticipated to range between 71 and 77 percent in the years 2019 through 2028.

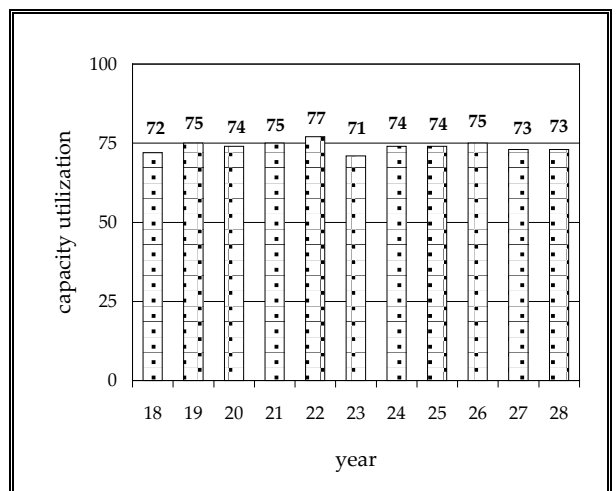


Figure 16 - Sea Cliff ES  
Capacity Utilization Level

**North Shore Middle School:** capacity utilization is anticipated to range between 79 and 91 percent in the years 2019 through 2028.

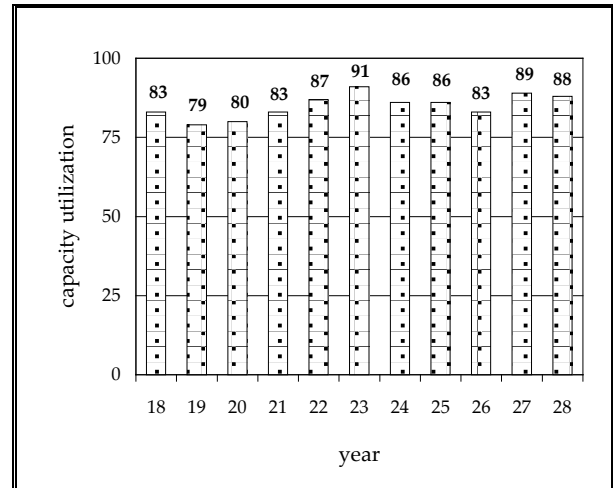


Figure 17 - North Shore MS  
Capacity Utilization Level

**North Shore Senior High School:** capacity utilization is anticipated to range between 72 and 80 percent in the years 2019 through 2028.

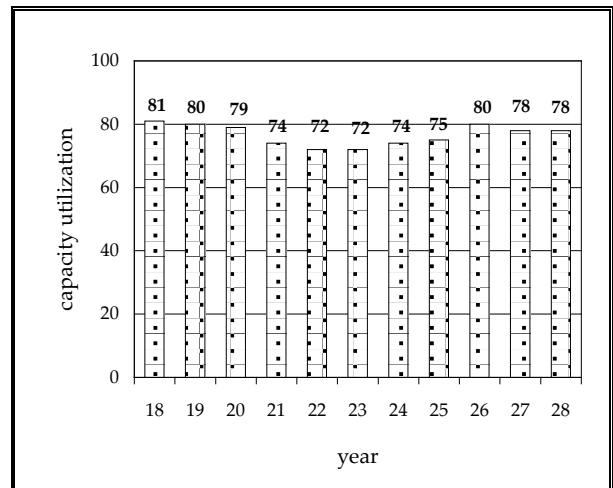


Figure 18 - North Shore Senior HS  
Capacity Utilization Level

## E. SUMMARY

The functional and efficient operation of each facility must be viewed in the context of an optimal operational range that allows for support program space, realistic enrollment of students at each grade level, incorporation of students with special needs, optimal class size load, programmatic considerations, and scheduling flexibility.

Based on the projected enrollment:

- Utilization within each of the elementary school buildings will range within **71 - 84** percent of capacity during the next ten years.
- Utilization within the North Shore Middle School will range within **79 - 91** percent of capacity during the next ten years.
- Utilization within the North Shore Senior High School will range within **72 - 81** percent of capacity during the next ten years.

It is important to note that the actual enrollment by grade in each school will not conform to the available number of seats in each grade level or special education classroom. Therefore, **it would be unrealistic to expect utilization levels to be at 100 percent of capacity.**

Projections indicate that district enrollment will remain stable, with an overall decrease of two students by 2028, when **2,583 K - 12** students are anticipated to be enrolled. All buildings will have adequate space to accommodate the core and support programs that are currently being offered to North Shore Central School District students.

# Appendix A



NORTH SHORE CENTRAL SCHOOL DISTRICT  
HISTORICAL ENROLLMENT

===== 2008 - 2013 : NYSED BEDS enrollment data, 2014-2018: SD December Enrollment Report =====											
GRADE	2008	2009	2010	2011	2012	2013	2014	2015	2016	2017	2018
KINDERGARTEN	228	176	185	168	164	156	169	187	172	190	152
FIRST	182	228	190	189	166	173	162	176	190	178	202
SECOND	197	185	242	196	191	170	181	166	188	198	196
THIRD	238	204	193	241	201	196	185	190	172	192	207
FOURTH	258	227	210	202	250	212	207	198	196	175	196
FIFTH	247	252	228	210	205	245	215	209	197	195	180
SIXTH	228	243	252	225	213	211	243	208	212	202	195
SEVENTH	235	238	249	250	230	211	218	244	208	214	198
EIGHTH	230	235	238	250	245	232	218	220	246	204	208
NINTH	224	221	219	220	222	230	217	215	214	238	188
TENTH	197	231	220	222	225	223	233	220	210	216	240
ELEVENTH	226	202	227	218	218	230	230	244	216	211	210
TWELFTH	195	224	199	231	220	223	235	235	242	215	213
UNGRADED	0	0	0	6	7	6	reported in student's chronical age grade level				
TOTAL K - 12	2,885	2,866	2,852	2,828	2,757	2,718	2,713	2,712	2,663	2,628	2,585
% CHANGE		-0.7%	-0.5%	-0.8%	-2.5%	-1.4%	-0.2%	0.0%	-1.8%	-1.3%	-1.6%
DISTRICT MIGRATION	08 - 09	09 - 10	10 - 11	11 - 12	12 - 13	13 - 14	14 - 15	15 - 16	16 - 17	17 - 18	AVERAGE
K - 1	100.0%	108.0%	102.2%	98.8%	105.5%	103.8%	104.1%	101.6%	103.5%	106.3%	<b>104.1%</b>
1 - 2	101.6%	106.1%	103.2%	101.1%	102.4%	104.6%	102.5%	106.8%	104.2%	110.1%	<b>105.1%</b>
2 - 3	103.6%	104.3%	99.6%	102.6%	102.6%	108.8%	105.0%	103.6%	102.1%	104.5%	<b>103.8%</b>
3 - 4	95.4%	102.9%	104.7%	103.7%	105.5%	105.6%	107.0%	103.2%	101.7%	102.1%	<b>103.5%</b>
4 - 5	97.7%	100.4%	100.0%	101.5%	98.0%	101.4%	101.0%	99.5%	99.5%	102.9%	<b>100.4%</b>
5 - 6	98.4%	100.0%	98.7%	101.4%	102.9%	99.2%	96.7%	101.4%	102.5%	100.0%	<b>100.5%</b>
6 - 7	104.4%	102.5%	99.2%	102.2%	99.1%	103.3%	100.4%	100.0%	100.9%	98.0%	<b>100.5%</b>
7 - 8	100.0%	100.0%	100.4%	98.0%	100.9%	103.3%	100.9%	100.8%	98.1%	97.2%	<b>100.1%</b>
8 - 9	96.1%	93.2%	92.4%	88.8%	93.9%	93.5%	98.6%	97.3%	96.7%	92.2%	<b>95.7%</b>
9 - 10	103.1%	99.5%	101.4%	102.3%	100.5%	101.3%	101.4%	97.7%	100.9%	100.8%	<b>100.4%</b>
10 - 11	102.5%	98.3%	99.1%	98.2%	102.2%	103.1%	104.7%	98.2%	100.5%	97.2%	<b>100.7%</b>
11 - 12	99.1%	98.5%	101.8%	100.9%	102.3%	102.2%	102.2%	99.2%	99.5%	100.9%	<b>100.8%</b>

NORTH SHORE CENTRAL SCHOOL DISTRICT  
HISTORICAL ENROLLMENT BY GRADE CONFIGURATION

GRADE	2008	2009	2010	2011	2012	2013	2014	2015	2016	2017	2018
KINDERGARTEN	228	176	185	168	164	156	169	187	172	190	152
FIRST	182	228	190	189	166	173	162	176	190	178	202
SECOND	197	185	242	196	191	170	181	166	188	198	196
THIRD	238	204	193	241	201	196	185	190	172	192	207
FOURTH	258	227	210	202	250	212	207	198	196	175	196
FIFTH	247	252	228	210	205	245	215	209	197	195	180
UNGRADED	0	0	0	2	2	1	reported in student's chronological age grade level				
TOTAL K - 5	1,350	1,272	1,248	1,208	1,179	1,153	1,119	1,126	1,115	1,128	1,133
% CHANGE		-5.8%	-1.9%	-3.2%	-2.4%	-2.2%	-2.9%	0.6%	-1.0%	1.2%	0.4%
SIXTH	228	243	252	225	213	211	243	208	212	202	195
SEVENTH	235	238	249	250	230	211	218	244	208	214	198
EIGHTH	230	235	238	250	245	232	218	220	246	204	208
UNGRADED	0	0	0	1	0	1	reported in student's chronological age grade level				
TOTAL 6 - 8	693	716	739	726	688	655	679	672	666	620	601
% CHANGE		3.3%	3.2%	-1.8%	-5.2%	-4.8%	3.7%	-1.0%	-0.9%	-6.9%	-3.1%
NINTH	224	221	219	220	222	230	217	215	214	238	188
TENTH	197	231	220	222	225	223	233	220	210	216	240
ELEVENTH	226	202	227	218	218	230	230	244	216	211	210
TWELFTH	195	224	199	231	220	223	235	235	242	215	213
UNGRADED	0	0	0	3	5	4	reported in student's chronological age grade level				
TOTAL 9 - 12	842	878	865	894	890	910	915	914	882	880	851
% CHANGE		4.3%	-1.5%	3.4%	-0.4%	2.2%	0.5%	-0.1%	-3.5%	-0.2%	-3.3%
TOTAL K - 12	2,885	2,866	2,852	2,828	2,757	2,718	2,713	2,712	2,663	2,628	2,585
% CHANGE		-0.7%	-0.5%	-0.8%	-2.5%	-1.4%	-0.2%	0.0%	-1.8%	-1.3%	-1.6%

NORTH SHORE CENTRAL SCHOOL DISTRICT  
KINDERGARTEN PROJECTIONS

Birth Year	Births Nassau County	SD	Enrollment Year	District K	Ratios K/ Cnty Births
<b>2003</b>	16,015	176	<b>2008</b>	228	0.0142
<b>2004</b>	15,626	161	<b>2009</b>	176	0.0113
<b>2005</b>	15,113	139	<b>2010</b>	185	0.0122
<b>2006</b>	15,218	133	<b>2011</b>	168	0.0110
<b>2007</b>	15,180	134	<b>2012</b>	164	0.0108
<b>2008</b>	15,033	111	<b>2013</b>	156	0.0104
<b>2009</b>	14,683	131	<b>2014</b>	169	0.0115
<b>2010</b>	14,200	124	<b>2015</b>	187	0.0132
<b>2011</b>	14,079	111	<b>2016</b>	172	0.0122
<b>2012</b>	13,994	129	<b>2017</b>	190	0.0136
<b>2013</b>	13,821	106	<b>2018</b>	152	0.0110
<b>2014</b>	14,339	115	<b>2019</b>	<b>176</b>	
<b>2015</b>	14,272	116	<b>2020</b>	<b>175</b>	
<b>2016</b>	14,277	133	<b>2021</b>	<b>189</b>	
<b>est. 2017</b>	<b>14,266</b>		<b>2022</b>	<b>171</b>	
<b>est. 2018</b>	<b>14,304</b>		<b>2023</b>	<b>171</b>	
<b>est. 2019</b>	<b>14,306</b>		<b>2024</b>	<b>171</b>	
<b>est. 2020</b>	<b>14,300</b>		<b>2025</b>	<b>171</b>	
<b>est. 2021</b>	<b>14,260</b>		<b>2026</b>	<b>171</b>	
<b>est. 2022</b>	<b>14,256</b>		<b>2027</b>	<b>171</b>	0.0119
<b>est. 2023</b>	<b>14,254</b>		<b>2028</b>	<b>171</b>	historical average

NORTH SHORE CENTRAL SCHOOL DISTRICT  
PROJECTED ENROLLMENT

GRADE	2018	2019	2020	2021	2022	2023	2024	2025	2026	2027	2028
	Actual										
KINDERGARTEN	152	176	175	189	171	171	171	171	171	171	171
FIRST	202	159	185	182	197	178	178	178	178	178	178
SECOND	196	214	168	194	191	207	187	187	187	187	187
THIRD	207	203	222	174	201	198	215	194	194	194	194
FOURTH	196	214	210	230	180	208	205	223	201	201	201
FIFTH	180	198	216	211	231	181	209	206	224	202	202
SIXTH	195	182	201	217	212	232	182	210	207	225	203
SEVENTH	198	196	183	202	218	213	233	183	211	208	226
EIGHTH	208	198	196	183	202	218	213	233	183	211	208
NINTH	188	199	189	188	175	193	209	204	223	175	202
TENTH	240	189	200	190	189	176	194	210	205	224	176
ELEVENTH	210	242	190	201	191	190	177	195	212	207	226
TWELFTH	213	212	244	192	203	193	192	178	197	214	209
TOTAL K - 12	2,585	2,582	2,579	2,553	2,561	2,558	2,565	2,572	2,593	2,597	2,583
% CHANGE		-0.1%	-0.1%	-1.0%	0.3%	-0.1%	0.3%	0.3%	0.8%	0.2%	-0.5%

Note: UGD students included in student's chronological age grade level

Note: Shaded area denotes students already enrolled in the school system.

NORTH SHORE CENTRAL SCHOOL DISTRICT  
PROJECTED DISTRICT ENROLLMENT BY GRADE CONFIGURATION

GRADE	2018	2019	2020	2021	2022	2023	2024	2025	2026	2027	2028
	Actual										
KINDERGARTEN	152	176	175	189	171	171	171	171	171	171	171
FIRST	202	159	185	182	197	178	178	178	178	178	178
SECOND	196	214	168	194	191	207	187	187	187	187	187
THIRD	207	203	222	174	201	198	215	194	194	194	194
FOURTH	196	214	210	230	180	208	205	223	201	201	201
FIFTH	180	198	216	211	231	181	209	206	224	202	202
TOTAL K - 5	1,133	1,164	1,176	1,180	1,171	1,143	1,165	1,159	1,155	1,133	1,133
% CHANGE		2.7%	1.0%	0.3%	-0.8%	-2.4%	1.9%	-0.5%	-0.3%	-1.9%	0.0%
SIXTH	195	182	201	217	212	232	182	210	207	225	203
SEVENTH	198	196	183	202	218	213	233	183	211	208	226
EIGHTH	208	198	196	183	202	218	213	233	183	211	208
TOTAL 6 - 8	601	576	580	602	632	663	628	626	601	644	637
% CHANGE		-4.2%	0.7%	3.8%	5.0%	4.9%	-5.3%	-0.3%	-4.0%	7.2%	-1.1%
NINTH	188	199	189	188	175	193	209	204	223	175	202
TENTH	240	189	200	190	189	176	194	210	205	224	176
ELEVENTH	210	242	190	201	191	190	177	195	212	207	226
TWELFTH	213	212	244	192	203	193	192	178	197	214	209
TOTAL 9 - 12	851	842	823	771	758	752	772	787	837	820	813
% CHANGE		-1.1%	-2.3%	-6.3%	-1.7%	-0.8%	2.7%	1.9%	6.4%	-2.0%	-0.9%
TOTAL K - 12	2,585	2,582	2,579	2,553	2,561	2,558	2,565	2,572	2,593	2,597	2,583
% CHANGE		-0.1%	-0.1%	-1.0%	0.3%	-0.1%	0.3%	0.3%	0.8%	0.2%	-0.5%

NORTH SHORE CENTRAL SCHOOL DISTRICT  
AVERAGE DISTRICT GRADE LEVEL SIZE

GRADE	1 08 - 13	2 13 - 18	3 18 - 23	4 23 - 28	2/1	change 3/2	4/3
KINDERGARTEN	180	171	172	171	-5.0%	<b>0.6%</b>	-0.6%
FIRST	188	180	184	178	-4.3%	<b>2.2%</b>	-3.3%
SECOND	197	183	195	190	-7.1%	<b>6.6%</b>	-2.6%
THIRD	212	190	201	198	-10.4%	<b>5.8%</b>	-1.5%
FOURTH	227	197	206	207	-13.2%	<b>4.6%</b>	<b>0.5%</b>
FIFTH	231	207	203	204	-10.4%	-1.9%	<b>0.5%</b>
SIXTH	229	212	207	210	-7.4%	-2.4%	<b>1.4%</b>
SEVENTH	236	216	202	212	-8.5%	-6.5%	<b>5.0%</b>
EIGHTH	238	221	201	211	-7.1%	-9.0%	<b>5.0%</b>
NINTH	223	217	189	201	-2.7%	-12.9%	<b>6.3%</b>
TENTH	220	224	197	198	<b>1.8%</b>	-12.1%	<b>0.5%</b>
ELEVENTH	220	224	204	201	<b>1.8%</b>	-8.9%	-1.5%
TWELFTH	215	227	210	197	<b>5.6%</b>	-7.5%	-6.2%

DISPLACEMENT BETWEEN ENTERING AND EXITING COHORTS

YEAR	GRADE 12	YEAR	K	DIFFERENCE
2008	195	2009	176	-19
2009	224	2010	185	-39
2010	199	2011	168	-31
2011	231	2012	164	-67
2012	220	2013	156	-64
2013	223	2014	169	-54
2014	235	2015	187	-48
2015	235	2016	172	-63
2016	242	2017	190	-52
2017	215	2018	152	-63
2018	213	2019	176	-37
2019	212	2020	175	-37
2020	244	2021	189	-55
2021	192	2022	171	-21
2022	203	2023	171	-32
2023	193	2024	171	-22
2024	192	2025	171	-21
2025	178	2026	171	-7
2026	197	2027	171	-26
2027	214	2028	171	-43
Average Difference 2008 - 2013				-44
Average Difference 2013 - 2018				-56
Average Difference 2018 - 2023				-36
Average Difference 2023 - 2028				-24

# GLEN HEAD ELEMENTARY SCHOOL HISTORICAL ENROLLMENT

===== 2008 - 2013 : NYSED BEDS enrollment data, 2014-2018: SD December Enrollment Report =====											
GRADE	2008	2009	2010	2011	2012	2013	2014	2015	2016	2017	2018
KINDERGARTEN	88	71	60	61	55	49	63	57	58	57	43
FIRST	60	85	74	63	62	59	52	60	57	57	64
SECOND	76	61	91	76	64	66	65	53	65	57	64
THIRD	87	77	65	95	79	66	67	67	54	62	64
FOURTH	85	86	79	68	99	84	71	71	67	53	64
FIFTH	84	80	87	78	67	99	86	73	70	63	54
TOTAL	480	460	456	441	426	423	404	381	371	349	353
% CHANGE		-4.2%	-0.9%	-3.3%	-3.4%	-0.7%	-4.5%	-5.7%	-2.6%	-5.9%	1.1%
Glen Head ES Migration	08 - 09	09 - 10	10 - 11	11 - 12	12 - 13	13 - 14	14 - 15	15 - 16	16 - 17	17 - 18	AVERAGE
K - 1	96.6%	104.2%	105.0%	101.6%	107.3%	106.1%	95.2%	100.0%	98.3%	112.3%	<b>102.4%</b>
1 - 2	101.7%	107.1%	102.7%	101.6%	106.5%	110.2%	101.9%	108.3%	100.0%	112.3%	<b>106.5%</b>
2 - 3	101.3%	106.6%	104.4%	103.9%	103.1%	101.5%	103.1%	101.9%	95.4%	112.3%	<b>102.8%</b>
3 - 4	98.9%	102.6%	104.6%	104.2%	106.3%	107.6%	106.0%	100.0%	98.1%	103.2%	<b>103.0%</b>
4 - 5	94.1%	101.2%	98.7%	98.5%	100.0%	102.4%	102.8%	98.6%	94.0%	101.9%	<b>99.9%</b>

# GLEN HEAD ELEMENTARY SCHOOL PROJECTED ENROLLMENT

GRADE	2018	2019	2020	2021	2022	2023	2024	2025	2026	2027	2028
	Actual										
KINDERGARTEN	43	57	57	59	55	55	55	55	55	55	55
FIRST	64	44	59	58	61	56	56	56	56	56	56
SECOND	64	68	47	63	62	65	60	60	60	60	60
THIRD	64	66	70	48	65	64	67	62	62	62	62
FOURTH	64	65	68	72	49	66	66	69	64	64	64
FIFTH	54	64	65	67	71	49	66	66	68	64	64
TOTAL	353	364	366	367	363	355	370	368	365	361	361
% CHANGE		3.1%	0.5%	0.3%	-1.1%	-2.2%	4.2%	-0.5%	-0.8%	-1.1%	0.0%
2018/19 Operational Capacity at Glen Head Elementary School = 495											
Utilization Level	71%	74%	74%	74%	73%	72%	75%	74%	74%	73%	73%

GLEN HEAD ELEMENTARY SCHOOL  
PROJECTED ENROLLMENT - SECTIONAL ANALYSIS

based on the maximum section sizes: K - 5 = 22

GRADE	2018	2019	2020	2021	2022	2023	2024	2025	2026	2027	2028
	Actual										
KINDERGARTEN (22)	<b>43</b>	57	57	59	55	55	55	55	55	55	55
# of Sections	<b>2</b>	3	3	3	3	3	3	3	3	3	3
Avg Section Size	<b>21.5</b>	19.0	19.0	19.7	18.3	18.3	18.3	18.3	18.3	18.3	18.3
FIRST (22)	<b>64</b>	44	59	58	61	56	56	56	56	56	56
# of Sections	<b>3</b>	2	3	3	3	3	3	3	3	3	3
Avg Section Size	<b>21.3</b>	22.0	19.7	19.3	20.3	18.7	18.7	18.7	18.7	18.7	18.7
SECOND (22)	<b>64</b>	68	47	63	62	65	60	60	60	60	60
# of Sections	<b>3</b>	4	3	3	3	3	3	3	3	3	3
Avg Section Size	<b>21.3</b>	17.0	15.7	21.0	20.7	21.7	20.0	20.0	20.0	20.0	20.0
THIRD (22)	<b>64</b>	66	70	48	65	64	67	62	62	62	62
# of Sections	<b>3</b>	3	4	3	3	3	4	3	3	3	3
Avg Section Size	<b>21.3</b>	22.0	17.5	16.0	21.7	21.3	16.8	20.7	20.7	20.7	20.7
FOURTH (22)	<b>64</b>	65	68	72	49	66	66	69	64	64	64
# of Sections	<b>3</b>	3	4	4	3	3	3	4	3	3	3
Avg Section Size	<b>21.3</b>	21.7	17.0	18.0	16.3	22.0	22.0	17.3	21.3	21.3	21.3
FIFTH (22)	<b>54</b>	64	65	67	71	49	66	66	68	64	64
# of Sections	<b>3</b>	3	3	4	4	3	3	3	4	3	3
Avg Section Size	<b>18.0</b>	21.3	21.7	16.8	17.8	16.3	22.0	22.0	17.0	21.3	21.3
Total Enrollment	<b>353</b>	364	366	367	363	355	370	368	365	361	361
Total Sections	<b>17</b>	18	20	20	19	18	19	19	19	18	18
Avg Section Size	<b>20.8</b>	20.5	18.4	18.5	19.2	19.7	19.6	19.5	19.3	20.1	20.1

Total Full-Size Classrooms at Glen Head Elementary School = 30

Note: The boxed cells indicate the projected average section size is approaching the maximum class size for the grade level.



# GLENWOOD LANDING ELEMENTARY SCHOOL HISTORICAL ENROLLMENT

2008 - 2013 : NYSED BEDS enrollment data, 2014-2018: SD December Enrollment Report											
GRADE	2008	2009	2010	2011	2012	2013	2014	2015	2016	2017	2018
KINDERGARTEN	66	55	61	57	55	60	53	72	66	61	66
FIRST	64	71	65	62	56	57	65	59	74	75	62
SECOND	64	65	73	71	66	56	60	67	65	81	80
THIRD	64	65	71	67	71	66	60	68	74	71	82
FOURTH	109	64	65	76	68	75	69	67	73	78	71
FIFTH	75	113	63	67	77	65	74	71	66	76	78
UNGRADED	0	0	0	2	1	0	reported in student's chronological age grade level				
TOTAL	442	433	398	402	394	379	381	404	418	442	439
% CHANGE		-2.0%	-8.1%	1.0%	-2.0%	-3.8%	0.5%	6.0%	3.5%	5.7%	-0.7%

Glenwood Landing ES Migration	08 - 09	09 - 10	10 - 11	11 - 12	12 - 13	13 - 14	14 - 15	15 - 16	16 - 17	17 - 18	AVERAGE
K - 1	107.6%	118.2%	101.6%	98.2%	103.6%	108.3%	111.3%	102.8%	113.6%	101.6%	<b>106.1%</b>
1 - 2	101.6%	102.8%	109.2%	106.5%	100.0%	105.3%	103.1%	110.2%	109.5%	106.7%	<b>106.1%</b>
2 - 3	101.6%	109.2%	91.8%	100.0%	100.0%	107.1%	113.3%	110.4%	109.2%	101.2%	<b>105.6%</b>
3 - 4	100.0%	100.0%	107.0%	101.5%	105.6%	104.5%	111.7%	107.4%	105.4%	100.0%	<b>105.8%</b>
4 - 5	103.7%	98.4%	103.1%	101.3%	95.6%	98.7%	102.9%	98.5%	104.1%	100.0%	<b>100.8%</b>

# GLENWOOD LANDING ELEMENTARY SCHOOL PROJECTED ENROLLMENT

GRADE	2018	2019	2020	2021	2022	2023	2024	2025	2026	2027	2028
	Actual										
KINDERGARTEN	66	67	66	67	62	62	62	62	62	62	62
FIRST	62	71	72	71	72	67	67	67	67	67	67
SECOND	80	67	76	75	74	76	70	70	70	70	70
THIRD	82	84	71	80	79	78	81	74	74	74	74
FOURTH	71	86	88	75	84	83	82	85	77	77	77
FIFTH	78	72	87	89	75	84	83	82	85	77	77
TOTAL	439	447	460	457	446	450	445	440	435	427	427
% CHANGE		1.8%	2.9%	-0.7%	-2.4%	0.9%	-1.1%	-1.1%	-1.1%	-1.8%	0.0%

2018/19 Operational Capacity at Glenwood Landing Elementary School = 547

Utilization Level	80%	82%	84%	84%	82%	82%	81%	80%	80%	78%	78%
-------------------	-----	-----	-----	-----	-----	-----	-----	-----	-----	-----	-----

GLENWOOD LANDING ELEMENTARY SCHOOL  
PROJECTED ENROLLMENT - SECTIONAL ANALYSIS

based on the maximum section sizes: K - 5 = 22

GRADE	2018 Actual	2019	2020	2021	2022	2023	2024	2025	2026	2027	2028
KINDERGARTEN (22)	66	67	66	67	62	62	62	62	62	62	62
# of Sections	4	4	3	4	3	3	3	3	3	3	3
Avg Section Size	16.5	16.8	22.0	16.8	20.7	20.7	20.7	20.7	20.7	20.7	20.7
FIRST (22)	62	71	72	71	72	67	67	67	67	67	67
# of Sections	3	4	4	4	4	4	4	4	4	4	4
Avg Section Size	20.7	17.8	18.0	17.8	18.0	16.8	16.8	16.8	16.8	16.8	16.8
SECOND (22)	80	67	76	75	74	76	70	70	70	70	70
# of Sections	4	4	4	4	4	4	4	4	4	4	4
Avg Section Size	20.0	16.8	19.0	18.8	18.5	19.0	17.5	17.5	17.5	17.5	17.5
THIRD (22)	82	84	71	80	79	78	81	74	74	74	74
# of Sections	4	4	4	4	4	4	4	4	4	4	4
Avg Section Size	20.5	21.0	17.8	20.0	19.8	19.5	20.3	18.5	18.5	18.5	18.5
FOURTH (22)	71	86	88	75	84	83	82	85	77	77	77
# of Sections	4	4	4	4	4	4	4	4	4	4	4
Avg Section Size	17.8	21.5	22.0	18.8	21.0	20.8	20.5	21.3	19.3	19.3	19.3
FIFTH (22)	78	72	87	89	75	84	83	82	85	77	77
# of Sections	4	4	4	5	4	4	4	4	4	4	4
Avg Section Size	19.5	18.0	21.8	17.8	18.8	21.0	20.8	20.5	21.3	19.3	19.3
GRADED SC SPED	included in grade level count										
# of Sections	4	4	4	4	4	4	4	4	4	4	4
Total Enrollment	439	447	460	457	446	450	445	440	435	427	427
Total Sections	27	28	27	29	27	27	27	27	27	27	27
Avg Section Size	19.2	18.6	20.1	18.3	19.4	19.6	19.4	19.2	19.0	18.7	18.7

Total Full-Size Classrooms at Glenwood Landing Elementary School = 35

Note: Graded SC SPED students are included in grade level counts. The actual average class sizes might be lower than shown.

Note: The boxed cells indicate the projected average section size is approaching the maximum class size for the grade level.

SEA CLIFF ELEMENTARY SCHOOL  
HISTORICAL ENROLLMENT

===== 2008 - 2013 : NYSED BEDS enrollment data, 2014-2018: SD December Enrollment Report =====											
GRADE	2008	2009	2010	2011	2012	2013	2014	2015	2016	2017	2018
KINDERGARTEN	74	50	64	50	54	47	53	58	48	72	43
FIRST	58	72	51	64	48	57	45	57	59	46	76
SECOND	57	59	78	49	61	48	56	46	58	60	52
THIRD	87	62	57	79	51	64	58	55	44	59	61
FOURTH	64	77	66	58	83	53	67	60	56	44	61
FIFTH	88	59	78	65	61	81	55	65	61	56	48
UNGRADED	0	0	0	0	1	1	reported in student's chronological age grade level				
TOTAL	428	379	394	365	359	351	334	341	326	337	341
% CHANGE		-11.4%	4.0%	-7.4%	-1.6%	-2.2%	-4.8%	2.1%	-4.4%	3.4%	1.2%
Sea Cliff ES Migration	08 - 09	09 - 10	10 - 11	11 - 12	12 - 13	13 - 14	14 - 15	15 - 16	16 - 17	17 - 18	AVERAGE
K - 1	97.3%	102.0%	100.0%	96.0%	105.6%	95.7%	107.5%	101.7%	95.8%	105.6%	<b>102.0%</b>
1 - 2	101.7%	108.3%	96.1%	95.3%	100.0%	98.2%	102.2%	101.8%	101.7%	113.0%	<b>103.4%</b>
2 - 3	108.8%	96.6%	101.3%	104.1%	104.9%	120.8%	98.2%	95.7%	101.7%	101.7%	<b>102.1%</b>
3 - 4	88.5%	106.5%	101.8%	105.1%	103.9%	104.7%	103.4%	101.8%	100.0%	103.4%	<b>102.7%</b>
4 - 5	92.2%	101.3%	98.5%	105.2%	97.6%	103.8%	97.0%	101.7%	100.0%	109.1%	<b>102.3%</b>

SEA CLIFF ELEMENTARY SCHOOL  
PROJECTED ENROLLMENT

GRADE	2018	2019	2020	2021	2022	2023	2024	2025	2026	2027	2028
	Actual										
KINDERGARTEN	43	52	52	63	54	54	54	54	54	54	54
FIRST	76	44	54	53	64	55	55	55	55	55	55
SECOND	52	79	45	56	55	66	57	57	57	57	57
THIRD	61	53	81	46	57	56	67	58	58	58	58
FOURTH	61	63	54	83	47	59	57	69	60	60	60
FIFTH	48	62	64	55	85	48	60	58	71	61	61
TOTAL	341	353	350	356	362	338	350	351	355	345	345
% CHANGE		3.5%	-0.8%	1.7%	1.7%	-6.6%	3.6%	0.3%	1.1%	-2.8%	0.0%
2018/19 Operational Capacity at Sea Cliff Elementary School = 473											
Utilization Level	72%	75%	74%	75%	77%	71%	74%	74%	75%	73%	73%

SEA CLIFF ELEMENTARY SCHOOL  
PROJECTED ENROLLMENT - SECTIONAL ANALYSIS

based on the maximum section sizes: K - 5 = 22

GRADE	2018	2019	2020	2021	2022	2023	2024	2025	2026	2027	2028
	Actual										
KINDERGARTEN (22)	<b>43</b>	52	52	63	54	54	54	54	54	54	54
# of Sections	<b>3</b>	3	3	3	3	3	3	3	3	3	3
Avg Section Size	<b>14.3</b>	17.3	17.3	21.0	18.0	18.0	18.0	18.0	18.0	18.0	18.0
FIRST (22)	<b>76</b>	44	54	53	64	55	55	55	55	55	55
# of Sections	<b>4</b>	2	3	3	3	3	3	3	3	3	3
Avg Section Size	<b>19.0</b>	22.0	18.0	17.7	21.3	18.3	18.3	18.3	18.3	18.3	18.3
SECOND (22)	<b>52</b>	79	45	56	55	66	57	57	57	57	57
# of Sections	<b>3</b>	4	3	3	3	3	3	3	3	3	3
Avg Section Size	<b>17.3</b>	19.8	15.0	18.7	18.3	22.0	19.0	19.0	19.0	19.0	19.0
THIRD (22)	<b>61</b>	53	81	46	57	56	67	58	58	58	58
# of Sections	<b>3</b>	3	4	3	3	3	4	3	3	3	3
Avg Section Size	<b>20.3</b>	17.7	20.3	15.3	19.0	18.7	16.8	19.3	19.3	19.3	19.3
FOURTH (22)	<b>61</b>	63	54	83	47	59	57	69	60	60	60
# of Sections	<b>3</b>	3	3	4	3	3	3	4	3	3	3
Avg Section Size	<b>20.3</b>	21.0	18.0	20.8	15.7	19.7	19.0	17.3	20.0	20.0	20.0
FIFTH (22)	<b>48</b>	62	64	55	85	48	60	58	71	61	61
# of Sections	<b>3</b>	3	3	3	4	3	3	3	4	3	3
Avg Section Size	<b>16.0</b>	20.7	21.3	18.3	21.3	16.0	20.0	19.3	17.8	20.3	20.3
Total Enrollment	<b>341</b>	353	350	356	362	338	350	351	355	345	345
Total Sections	<b>19</b>	18	19	19	19	18	19	19	19	18	18
Avg Section Size	<b>17.9</b>	19.7	18.3	18.6	18.9	18.8	18.5	18.5	18.7	19.2	19.2

Total Full-Size Classrooms at Sea Cliff Elementary School = 29

Note: The boxed cells indicate the projected average section size is approaching the maximum class size for the grade level.

NORTH SHORE CENTRAL SCHOOL DISTRICT  
ELEMENTARY SECTION ANALYSIS - SUMMARY

based on the maximum section sizes: K - 5 = 22

GRADE	2018 Actual	2019	2020	2021	2022	2023	2024	2025	2026	2027	2028
KINDERGARTEN (22)	<b>152</b>	176	175	189	171	171	171	171	171	171	171
# of Sections	<b>9</b>	10	9	10	9	9	9	9	9	9	9
Avg Section Size	<b>17.4</b>	17.7	19.4	19.1	19.0	19.0	19.0	19.0	19.0	19.0	19.0
FIRST (22)	<b>202</b>	159	185	182	197	178	178	178	178	178	178
# of Sections	<b>10</b>	8	10	10	10	10	10	10	10	10	10
Avg Section Size	<b>20.3</b>	20.6	18.6	18.3	19.9	17.9	17.9	17.9	17.9	17.9	17.9
SECOND (22)	<b>196</b>	214	168	194	191	207	187	187	187	187	187
# of Sections	<b>10</b>	12	10	10	10	10	10	10	10	10	10
Avg Section Size	<b>19.6</b>	17.8	16.6	19.5	19.2	20.9	18.8	18.8	18.8	18.8	18.8
THIRD (22)	<b>207</b>	203	222	174	201	198	215	194	194	194	194
# of Sections	<b>10</b>	10	12	10	10	10	12	10	10	10	10
Avg Section Size	<b>20.7</b>	20.2	18.5	17.1	20.1	19.8	17.9	19.5	19.5	19.5	19.5
FOURTH (22)	<b>196</b>	214	210	230	180	208	205	223	201	201	201
# of Sections	<b>10</b>	10	11	12	10	10	10	12	10	10	10
Avg Section Size	<b>19.8</b>	21.4	19.0	19.2	17.7	20.8	20.5	18.6	20.2	20.2	20.2
FIFTH (22)	<b>180</b>	198	216	211	231	181	209	206	224	202	202
# of Sections	<b>10</b>	10	10	12	12	10	10	10	12	10	10
Avg Section Size	<b>17.8</b>	20.0	21.6	17.6	19.3	17.8	20.9	20.6	18.7	20.3	20.3
GRADED SC SPED	included in grade level count										
# of Sections	<b>4</b>	4	4	4	4	4	4	4	4	4	4
Total Enrollment	<b>1,133</b>	1,164	1,176	1,180	1,171	1,143	1,165	1,159	1,155	1,133	1,133
Total Sections	<b>63</b>	64	66	68	65	63	65	65	65	63	63
Avg Section Size	<b>19.3</b>	19.6	18.9	18.5	19.2	19.4	19.2	19.1	19.0	19.3	19.3

Note: Graded SC SPED students are included in grade level counts. The actual average class sizes might be lower than shown.

Note: The boxed cells indicate the projected average section size is approaching the maximum class size for the grade level.

NORTH SHORE MIDDLE SCHOOL  
HISTORICAL ENROLLMENT

===== 2008 - 2013 : NYSED BEDS enrollment data, 2014-2018: SD December Enrollment Report =====											
GRADE	2008	2009	2010	2011	2012	2013	2014	2015	2016	2017	2018
SIXTH	228	243	252	225	213	211	243	208	212	202	195
SEVENTH	235	238	249	250	230	211	218	244	208	214	198
EIGHTH	230	235	238	250	245	232	218	220	246	204	208
UNGRADED	0	0	0	1	0	1	reported in student's chronical age grade level				
TOTAL	693	716	739	726	688	655	679	672	666	620	601
% CHANGE		3.3%	3.2%	-1.8%	-5.2%	-4.8%	3.7%	-1.0%	-0.9%	-6.9%	-3.1%
Middle School Migration	08 - 09	09 - 10	10 - 11	11 - 12	12 - 13	13 - 14	14 - 15	15 - 16	16 - 17	17 - 18	<b>AVERAGE</b>
6 - 7	104.4%	102.5%	99.2%	102.2%	99.1%	103.3%	100.4%	100.0%	100.9%	98.0%	<b>100.5%</b>
7 - 8	100.0%	100.0%	100.4%	98.0%	100.9%	103.3%	100.9%	100.8%	98.1%	97.2%	<b>100.1%</b>

NORTH SHORE MIDDLE SCHOOL  
PROJECTED ENROLLMENT

GRADE	2018	2019	2020	2021	2022	2023	2024	2025	2026	2027	2028
	Actual										
SIXTH	195	182	201	217	212	232	182	210	207	225	203
SEVENTH	198	196	183	202	218	213	233	183	211	208	226
EIGHTH	208	198	196	183	202	218	213	233	183	211	208
TOTAL	601	576	580	602	632	663	628	626	601	644	637
% CHANGE		-4.2%	0.7%	3.8%	5.0%	4.9%	-5.3%	-0.3%	-4.0%	7.2%	-1.1%
<b>2018/19 Operational Capacity at North Shore Middle School = 727</b>											
Utilization Level	83%	79%	80%	83%	87%	91%	86%	86%	83%	89%	88%

# NORTH SHORE SENIOR HIGH SCHOOL HISTORICAL ENROLLMENT

===== 2008 - 2013 : NYSED BEDS enrollment data, 2014-2018: SD December Enrollment Report =====											
GRADE	2008	2009	2010	2011	2012	2013	2014	2015	2016	2017	2018
NINTH	224	221	219	220	222	230	217	215	214	238	188
TENTH	197	231	220	222	225	223	233	220	210	216	240
ELEVENTH	226	202	227	218	218	230	230	244	216	211	210
TWELFTH	195	224	199	231	220	223	235	235	242	215	213
UNGRADED	0	0	0	3	5	4	reported in student's chronical age grade level				
TOTAL	842	878	865	894	890	910	915	914	882	880	851
% CHANGE		4.3%	-1.5%	3.4%	-0.4%	2.2%	0.5%	-0.1%	-3.5%	-0.2%	-3.3%
High School Migration	08 - 09	09 - 10	10 - 11	11 - 12	12 - 13	13 - 14	14 - 15	15 - 16	16 - 17	17 - 18	<b>AVERAGE</b>
9 - 10	103.1%	99.5%	101.4%	102.3%	100.5%	101.3%	101.4%	97.7%	100.9%	100.8%	<b>100.4%</b>
10 - 11	102.5%	98.3%	99.1%	98.2%	102.2%	103.1%	104.7%	98.2%	100.5%	97.2%	<b>100.7%</b>
11 - 12	99.1%	98.5%	101.8%	100.9%	102.3%	102.2%	102.2%	99.2%	99.5%	100.9%	<b>100.8%</b>

# NORTH SHORE SENIOR HIGH SCHOOL PROJECTED ENROLLMENT

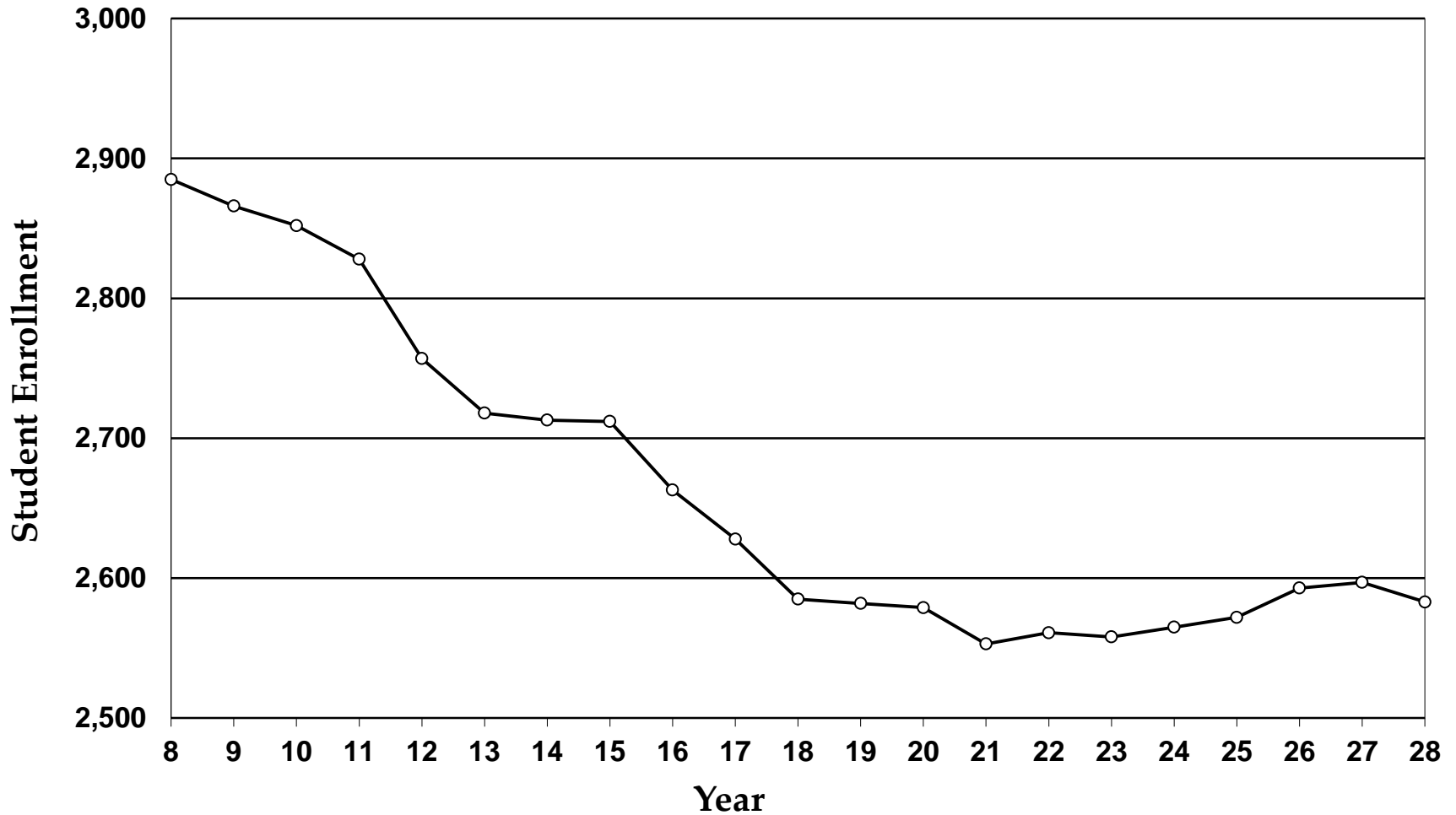
GRADE	2018	2019	2020	2021	2022	2023	2024	2025	2026	2027	2028
	Actual										
NINTH	188	199	189	188	175	193	209	204	223	175	202
TENTH	240	189	200	190	189	176	194	210	205	224	176
ELEVENTH	210	242	190	201	191	190	177	195	212	207	226
TWELFTH	213	212	244	192	203	193	192	178	197	214	209
TOTAL	851	842	823	771	758	752	772	787	837	820	813
% CHANGE		-1.1%	-2.3%	-6.3%	-1.7%	-0.8%	2.7%	1.9%	6.4%	-2.0%	-0.9%
<b>2018/19 Operational Capacity at North Shore Senior High School = 1,046</b>											
Utilization Level	81%	80%	79%	74%	72%	72%	74%	75%	80%	78%	78%

# Appendix B



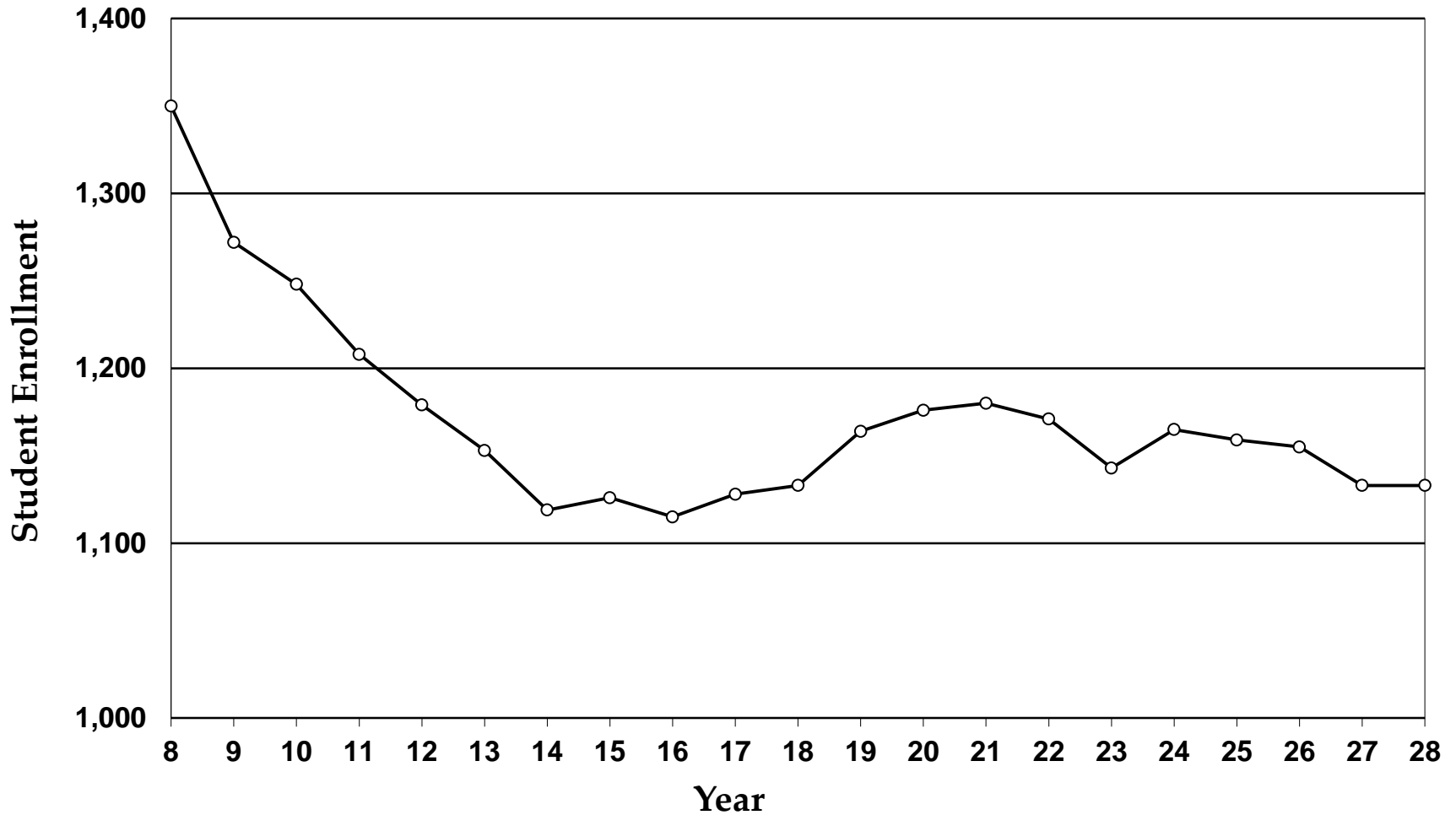
# North Shore Central School District

## Enrollment: Grades K - 12



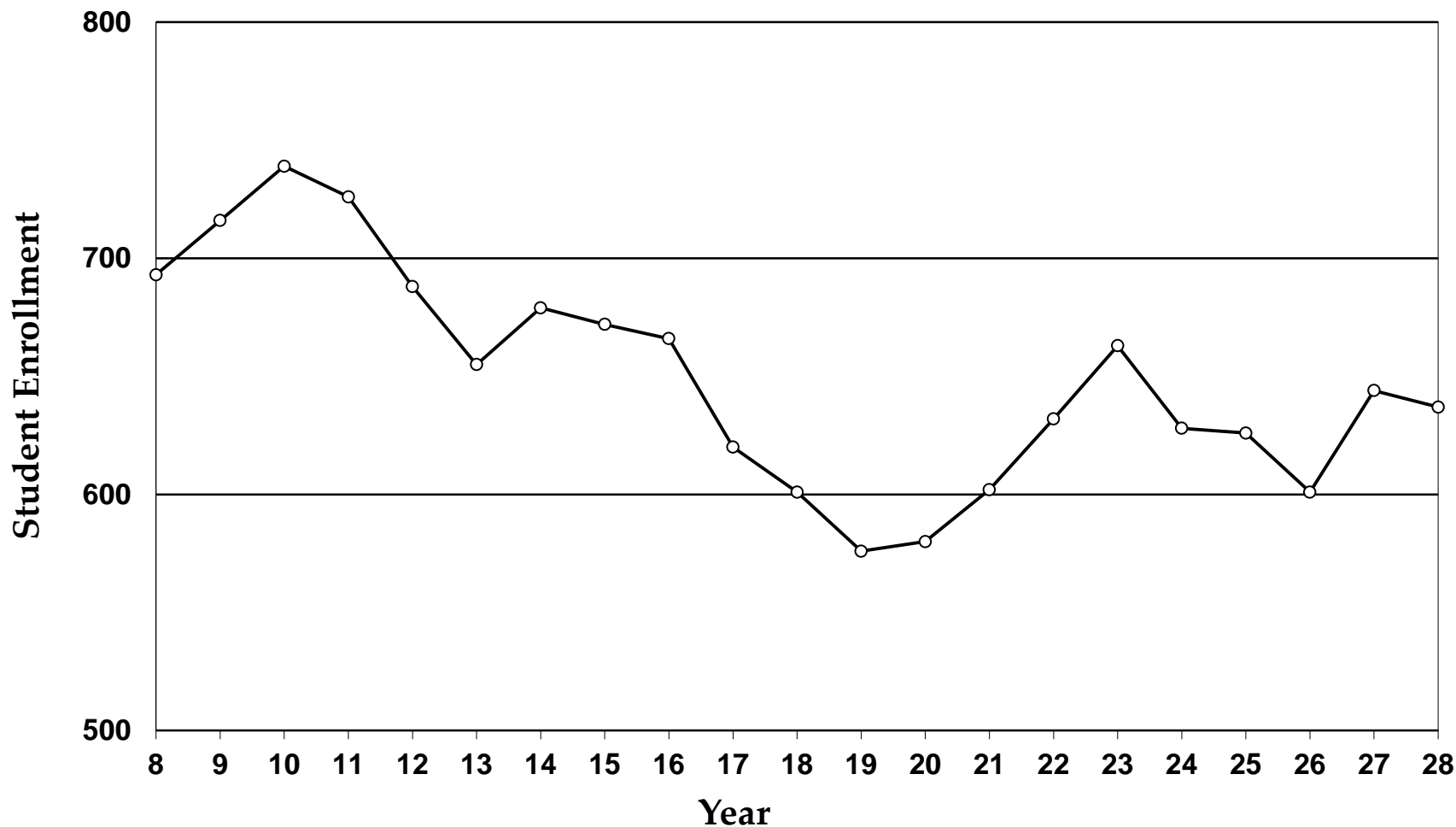
# North Shore Central School District

## Enrollment: Grades K - 5



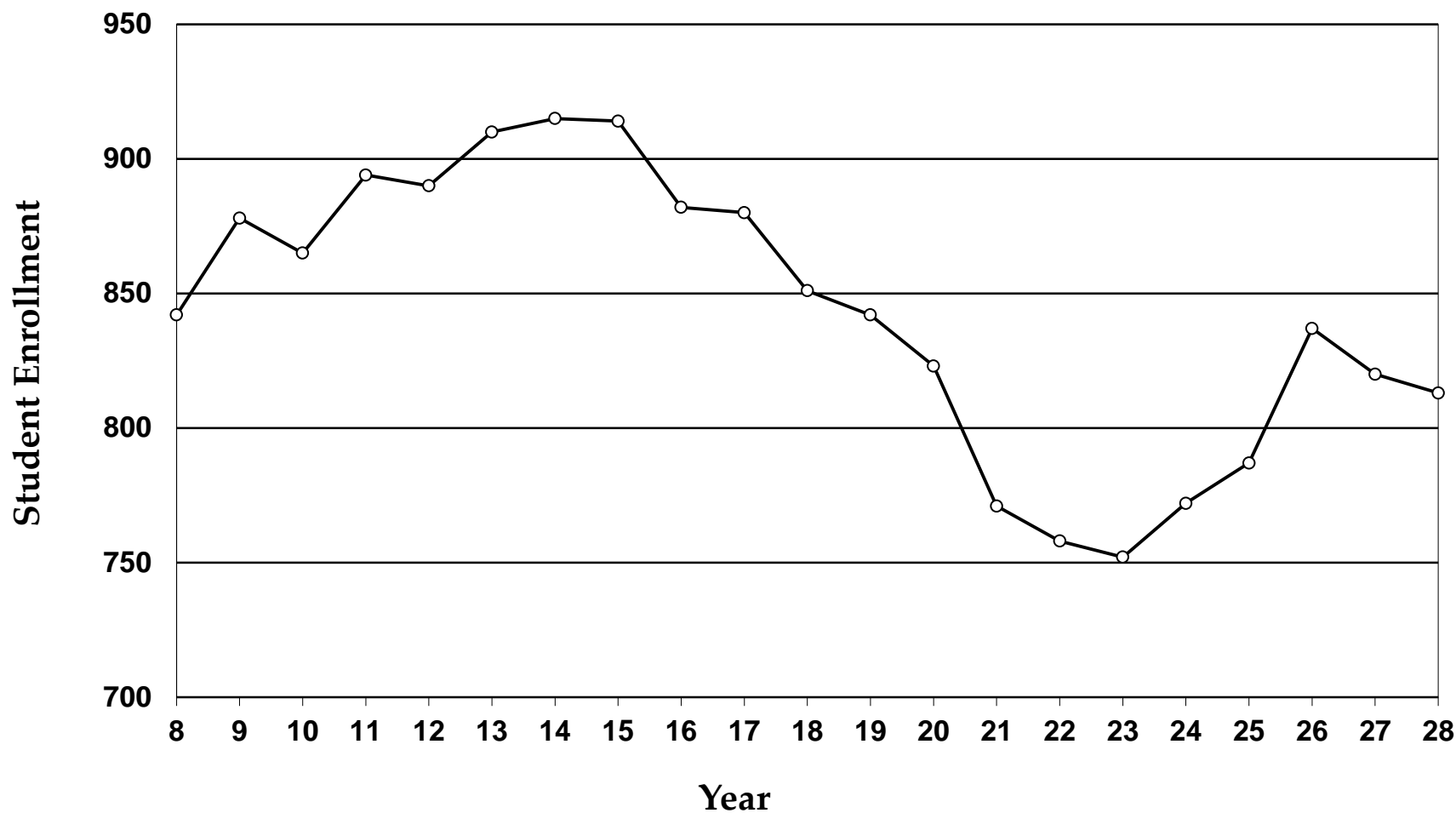
# North Shore Central School District

## Enrollment: Grades 6 - 8



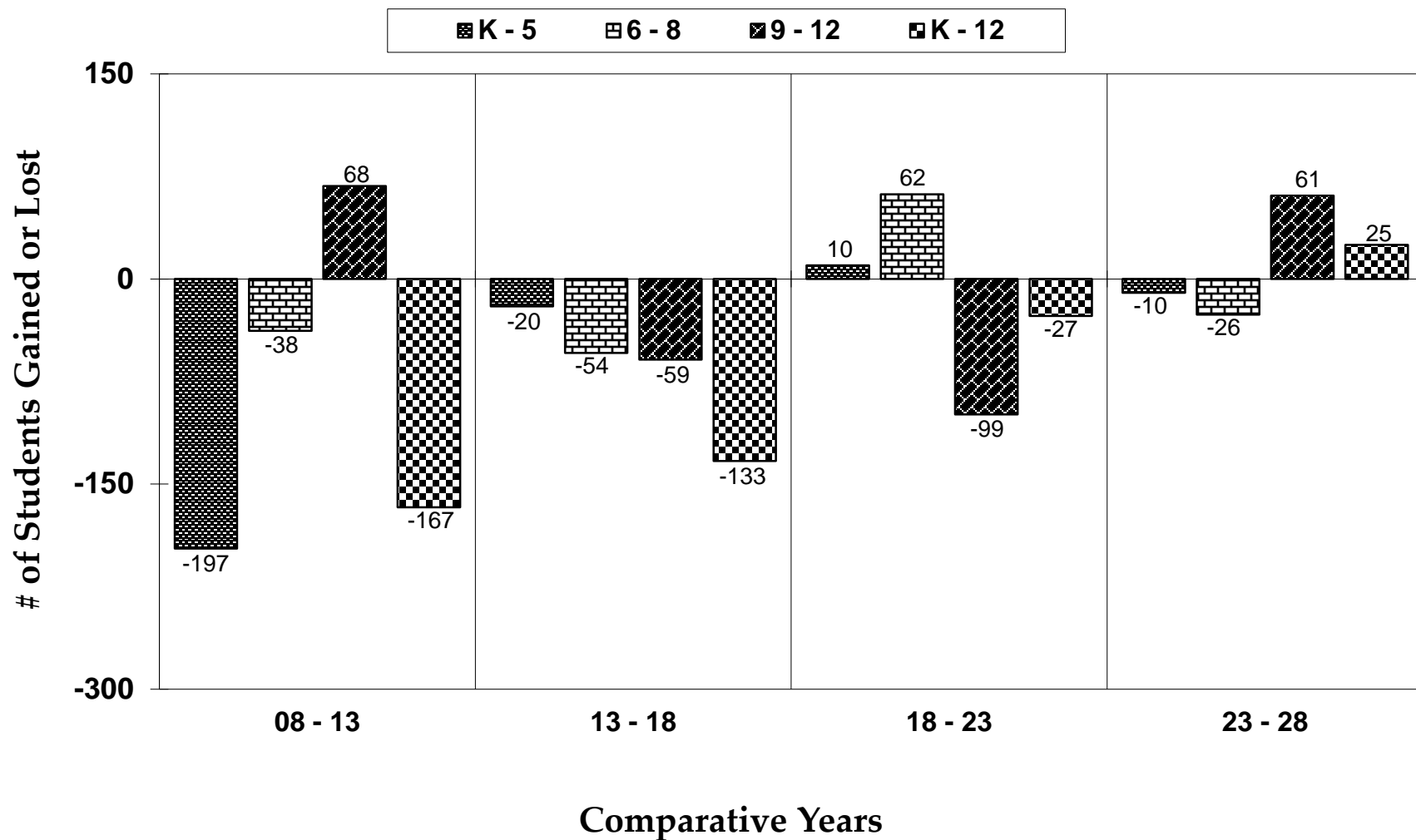
# North Shore Central School District

## Enrollment: Grades 9 - 12



# North Shore Central School District

## Enrollment Change 2008 - 2028



# Appendix C



## DIVISION OF INSTRUCTIONAL SUPPORT SERVICES

Professional Development  
(631) 595-6844  
rallen@wsboces.org

Angelique Johnson-Dingle, *District Superintendent*  
631/595-6815  
ajohnson@wsboces.org

Planning & Research  
(631) 595-6802  
bgrazian@wsboces.org

School Library  
(631) 595-6834  
skardasz@wsboces.org

Student Support Services  
(631) 595-6814  
skessler@wsboces.org

Instructional Technology  
(631) 595-6810  
tdenicol@wsboces.org

October 15, 2018

Dear New Homeowner:

Congratulations on the purchase of your home in the **North Shore Central School District**. We are in the process of conducting a demographic study in your area which will assist the School District in planning for its future student enrollment.

I am writing to request your assistance in the study. I have enclosed a survey that will aid in monitoring changes in household composition. This information is critical for forecasting student enrollment. Your cooperation is very much appreciated.

An addressed return envelope has been enclosed for your convenience. If you prefer, you may fax it back to us at (631) 623-4913. If you want to reach us at our office, our direct telephone number is (631) 595-6802.

Sincerely,

*Barbara Graziano*

Barbara Graziano  
School Planning & Research Manager

enc.  
BG:df

## North Shore Central School District New Resident Survey

1. How important was the school district in your decision to purchase a home in the North Shore Central School District?

very important                  somewhat important                  not important

2. What is your age group?                  20 - 39                  40 - 64                  65+

3. Is this the first home you have owned?                  Yes                  No

4. How many bedrooms are in the home? \_\_\_\_\_

5. Do you have any children between the ages of 0 - 18?                  Yes                  No

If yes, how many \_\_\_\_\_ What are their ages? \_\_\_\_\_

6. If you have (or plan to have) children, would they attend  
public schools                  non-public schools

7. If there was a former owner, did they have children between the ages of 0 - 18?

Yes                  No

If yes, how many? \_\_\_\_\_ What were their approximate ages? \_\_\_\_\_

8. What attracted you to this community?

schools                  price of housing                  proximity to work/family

others (please specify) \_\_\_\_\_

9. Did you live in the North Shore Central School District prior to purchasing this home?

Yes                  No

If no, where did you live?                  Nassau County                  New York City  
Other county \_\_\_\_\_ Out of state \_\_\_\_\_  
(County)                  (State)

Thank you very much for your cooperation and assistance.

Western Suffolk BOCES, Office of School Planning & Research

Fax # (631) 623-4913

5/26/2017



# Appendix D

**Glen Head Elementary School**

maximum class size : K - 5 = 22

Floor	Room	SQ. FT.	Usage	Room Capacity	Avg Use	% Daily Use	Comments
<b>Self-Contained Instructional Classrooms</b>							
		1,111	Kindergarten	22	21	100%	note: ENL co-teaching class note: with single bathroom
		1,100	Kindergarten	22	21	100%	note: with single bathroom
		813	First Grade	22	21	100%	
		819	First Grade	22	21	100%	note: ENL co-teaching class
		819	First Grade	22	21	100%	note: ICT co-teaching class
		665	Second Grade	22	21	100%	note: additional 74 sq. ft. of closet space
		732	Second Grade	22	21	100%	note: ENL co-teaching class
		667	Second Grade	22	21	100%	note: ICT co-teaching class note: additional 76 sq. ft. of closet space
		756	Third Grade	22	20	100%	note: ICT co-teaching class
		668	Third Grade	22	21	100%	
		761	Third Grade	22	21	100%	note: ENL co-teaching class note: additional 75 sq. ft. of closet space
		819	Fourth Grade	22	21	100%	
		833	Fourth Grade	22	21	100%	note: ICT co-teaching class
		817	Fourth Grade	22	21	100%	note: ENL co-teaching class
		658	Fifth Grade	22	18	100%	note: ICT co-teaching class note: additional 57 sq. ft. of closet space
		742	Fifth Grade	22	18	100%	
		690	Fifth Grade	22	18	100%	note: ENL co-teaching class note: additional 72 sq. ft. of closet space

**Dedicated Support Rooms Greater Than 550 Square Feet**

		669	AIS Math	22	10	75%	note: Two teachers share the room and work with small groups of approx. 5 students at a time each.
		1,114	Art	22	20	75%	
		778	Computer Lab	22	20	75%	note: 26 computer stations
		742	ENL	22	5	75%	note: 2 teachers shared, use depends upon day of cycle
		686	FLES Program - Mandarin	22	20	75%	note: additional 74 sq. ft. of closet space
		664	FLES Program - Spanish	22	15	75%	note: additional 63 sq. ft. of closet space

**Glen Head Elementary School**

maximum class size : K - 5 = 22

Floor	Room	SQ. FT.	Usage	Room Capacity	Avg Use	% Daily Use	Comments
<b><i>Dedicated Support Rooms Greater Than 550 Square Feet</i></b>							
		764	Music - General Music	22	21	75%	
		668	STEAM Program	22	20	75%	note: additional 741 sq. ft. of closet space
		643	SWES Enrichment Program	22	20	88%	note: additional 58 sq. ft. of closet space

***Other Usage/Unoccupied Rooms Greater Than 550 Square Feet***

		614	Behavior Consultant	22	3	75%	
		770	Makerspace	22	20	50%	note: also used for Word Wizard, meeting and outside groups
		692	OT/PT	22	6	75%	note: shared space, built-in swing in ceiling
		694	Speech	22	6	75%	note: two teachers share the room and work with approx. 3-5 students at a time each.
<b>Total Classrooms :</b>				<b>30</b>			
<b>REG ED Classrooms :</b>				<b>17</b>	<b>% of rooms used for REG ED :</b>	<b>57%</b>	
<b>Instruction Support Use Classrooms :</b>				<b>9</b>	<b>% of rooms used for support program :</b>	<b>30%</b>	
<b>Other Usage Classrooms :</b>				<b>4</b>	<b>% of rooms used for other usage :</b>	<b>13%</b>	
<b>Operational Capacity :</b>				<b>495</b>	<b>(capacity based on 25% of space reserved for support programs)</b>		
<b>2018/19 Enrollment :</b>				<b>353</b>			
<b>2018/19 Utilization :</b>				<b>71%</b>			

**Glen Head Elementary School**

maximum class size : K - 5 = 22

Floor	Room	SQ. FT.	Usage	Room Capacity	Avg Use	% Daily Use	Comments
<b>Support/Resource Rooms Less Than 550 Square Feet</b>							
		129	AIS Reading		5	75%	
		191	AIS Reading		5	75%	note: used for coaching and a book room for K-2 also
		193	AIS Reading		5	75%	note: used for book room for 3-5 and coaching also
		466	Music - Band Instrument Lessons				
		350	Music - Band Instrument Lessons		6	38%	note: was a storage closet
		371	Music - Instrumental Lessons		5	38%	
		257	Music - Instrumental Lessons		5	38%	
		236	Resource Room		5	75%	

**Common Facilities**

		2,641	Auditorium				note: band/orchestra rehearsal, multipurpose room, indoor play
		2,312	Cafeteria				
		3,890	Gym		40	75%	note: approx. 2.1-unit of standard elementary gym
		2,959	Library		20	75%	
		536	Stage				

**Non-Instructional Space**

		1,013	Custodial Break Room and Shop Area				
		55	Faculty Bathroom/Lactation Room				
		991	Faculty Lounge				note: supplies and copy machines within
		95	Kiln Room and Clay Storage				note: off art room (#201)
		768	Kitchen Food Prep & Servery				
			Main Boiler Plant for Building				
		274	Office - Principal				
		457	Office - Director				note: for meeting and PD also

**Glen Head Elementary School**

maximum class size : K - 5 = 22

Floor	Room	SQ. FT.	Usage	Room Capacity	Avg Use	% Daily Use	Comments
<b>Non-Instructional Space</b>							
		112	Office - Gym Office				
		187	Office - Librarian				
		351	Office - Main Office				
		365	Office - Nurse/Attendance				
		183	Office - Psychologist				
		131	Office - Social Worker				
			Storage				note: off Gathering Room/Auditorium
			Storage - Art Supplies				note: off art room (#201)
			Storage - Book Storage				
			Storage - Kitchen				
			Storage - Miscellaneous Classroom Items				

**Glenwood Landing Elementary School**

maximum class size : K - 5 = 22

Floor/Level	Room	SQ. FT.	Usage	Room Capacity	Avg Use	% Daily Use	Comments
<b>Self-Contained Instructional Classrooms</b>							
		833	Kindergarten	22	20	100%	
		837	Kindergarten	22	20	100%	
		857	Kindergarten	22	20	100%	
		863	Kindergarten	22	20	100%	
		837	First Grade	22	20	100%	
		835	First Grade	22	20	100%	
		837	First Grade	22	20	100%	
		745	Second Grade	22	20	100%	
		836	Second Grade	22	20	100%	
		837	Second Grade	22	20	100%	
		839	Second Grade	22	20	100%	
		852	Third Grade	22	20	100%	
		781	Third Grade	22	20	100%	
		835	Third Grade	22	20	100%	
		839	Third Grade	22	20	100%	
		591	Fourth Grade	21	20	100%	note: additional 61 sq. ft. of closet space
		657	Fourth Grade	22	20	100%	note: additional 62 sq. ft. of closet space
		633	Fourth Grade	22	20	100%	
		591	Fourth Grade	21	20	100%	note: additional 64 sq. ft. of closet space
		590	Fifth Grade	21	20	100%	note: additional 60 sq. ft. of closet space
		548	Fifth Grade	19	20	100%	note: room less than 550 sq. ft.
		592	Fifth Grade	21	20	100%	note: additional 60 sq. ft. of closet space
		659	Fifth Grade	22	20	100%	note: additional 120 sq. ft. of 2 closet spaces

**Glenwood Landing Elementary School**

maximum class size : K - 5 = 22

Floor/Level	Room	SQ. FT.	Usage	Room Capacity	Avg Use	% Daily Use	Comments
Self-Contained Instructional Classrooms							
		755	SC SPED (15:1) - Grades K - 1	15	10	100%	
		837	SC SPED (15:1) - Grade 2	15	15	100%	
		756	SC SPED (15:1) - Grade3	15	15	100%	
		634	SC SPED (15:1) - Grades 4 - 5	12	15	100%	.
Dedicated Support Rooms Greater Than 550 Square Feet							
		905	Art Room	22	20	88%	
		604	Computer Lab	21	20	75%	
		598	ENL/OT/PT	21	6	100%	note: shared space
		764	FLES/STEAM/SWES Programs	22	20	75%	
		592	Music - Band	21	8	100%	note: shared space
		792	Music - General Music	22	20	88%	
		835	Music - Orchestra	22	20	75%	note: instrumental lessons also
		656	Reading/Speech	22	20	100%	note: additional 120 sq. ft. of 2 closet spaces
Total Classrooms :			35				
REG ED Classrooms :			23		% of rooms used for REG ED :		66%
SC SPED Classrooms :			4		% of rooms used for SC SPED :		11%
Instruction Support Use Classrooms :			8		% of rooms used for support program :		23%
Operational Capacity :			547		(capacity based on 25% of space reserved for support programs)		
2018/19 Enrollment :			439				
2018/19 Utilization :			80%				

**Glenwood Landing Elementary School**

maximum class size : K - 5 = 22

Floor/Level	Room	SQ. FT.	Usage	Room Capacity	Avg Use	% Daily Use	Comments
<b>Support/Resource Rooms Less Than 550 Square Feet</b>							
		546	AIS Math/Literacy Coach/Reading/Resource Room		15	100%	note: shared by 5 teachers
		297	Music Instrumental Lessons		6	75%	
		223	Music Instrumental Lessons/ Foreign Language		8	100%	note: shared space

**Common Facilities**

		3,673	Auditorium		75-450	75%	note: for indoor recess and presentations
		486	Auditorium Lobby				
		3,564	Cafeteria				
		3,592	Gym		41	88%	note: approx. 1.9-unit of standard elementary gym
		2,580	Library		25	67%	note: used for professional development and AIS math also
		1,318	Stage				

**Non-Instructional Space**

			Auditorium HVAC Mechanical Room				
		185	Custodial Break Room				
		190	Custodial Shop Area				
			Custodial Storage				
			Custodial Supplies				
			Custodial Supplies and Paper Storage				
		361	Faculty Lounge				
		182	Faculty Work Room				
			Gym & Cafeteria HVAC Room				
		69	Kiln Room and Clay Storage				note: small room off #233
		587	Kitchen				
		67	Lactation Room				



**Glenwood Landing Elementary School**

maximum class size : K - 5 = 22

Floor/Level	Room	SQ. FT.	Usage	Room Capacity	Avg Use	% Daily Use	Comments
<b>Non-Instructional Space</b>							
			Main Boiler Plant				
			Main Electric Gear				
		180	Office - Administrator's Office				
		100	Office - Attendance Office				
		232	Office - Behavioral Consultant		5	100%	
		204	Office - Gym Office				
		126	Office - Librarian's Office				
		300	Office - Main Office				
		195	Office - Nurse's Office				
		310	Office - Principal's Office				
		371	Office - Psychologist		2	100%	note: shared space
		164	Office - Social Worker		5	100%	note: shared space
		296	Office - SWES Office				
			Storage - Art Room Supplies				note: small storage room off #233
			Storage - Classroom Furniture, Chairs, etc.				note: small storage room off #G28
			Storage - Custodial Equipment/Hot Water Pumps				
			Storage - Food Service				
			Storage - Food Service				
			Storage - Food Service				
			Storage - Physical Education Storage				
			Storage - Physical Education Storage				
			Storage - PTA				
			Vacuum/Consolidate Pump for 1950 Wing				

**Sea Cliff Elementary School**

maximum class size : K - 5 = 22

Floor	Room	SQ. FT.	Usage	Room Capacity	Avg Use	% Daily Use	Comments
<b>Self-Contained Instructional Classrooms</b>							
		987	Kindergarten	22	20	100%	
		907	Kindergarten	22	20	100%	
		890	Kindergarten	22	20	100%	
		782	First Grade	22	20	100%	
		783	First Grade	22	21	100%	
		781	First Grade	22	21	100%	
		748	First Grade	22	21	100%	
		753	Second Grade	22	20	100%	
		788	Second Grade	22	20	100%	
		784	Second Grade	22	20	100%	
		634	Third Grade	22	20	100%	
		695	Third Grade	22	20	100%	
		652	Third Grade	22	20	100%	
		791	Fourth Grade	22	20	100%	
		781	Fourth Grade	22	20	100%	
		755	Fourth Grade	22	20	100%	
		757	Fifth Grade	22	20	100%	
		784	Fifth Grade	22	20	100%	
		784	Fifth Grade	22	20	100%	

**Dedicated Support Rooms Greater Than 550 Square Feet**

		635	AIS Math	22	5	78%	
		939	Art	22	20	75%	
		560	Computer Lab	20	20	100%	note: teacher signup
		726	Foreign Language - Mandarin	22	20	75%	

**Sea Cliff Elementary School**

maximum class size : K - 5 = 22

Floor	Room	SQ. FT.	Usage	Room Capacity	Avg Use	% Daily Use	Comments
<b><i>Dedicated Support Rooms Greater Than 550 Square Feet</i></b>							
		592	Music - General Music	21	20	75%	
		781	Reading	22	6	100%	
		569	Reading	20	3	88%	
		652	STEAM Lab	22			
		927	SWES Program	22	20	75%	

***Other Usage/Unoccupied Rooms Greater Than 550 Square Feet***

		575	Multi-Purpose Classroom	20	20	13%	note: used as needed
Total Classrooms :			29				
REG ED Classrooms :			19	% of rooms used for REG ED :		66%	
Instruction Support Use Classrooms :			9	% of rooms used for support program :		31%	
Other Usage Classrooms :			1	% of rooms used for other usage :		3%	
Operational Capacity :			473	(capacity based on 25% of space reserved for support programs)			
2018/19 Enrollment :			341				
2018/19 Utilization :			72%				

**Sea Cliff Elementary School**

maximum class size : K - 5 = 22

Floor	Room	SQ. FT.	Usage	Room Capacity	Avg Use	% Daily Use	Comments
<b>Support/Resource Rooms Less Than 550 Square Feet</b>							
		178	ENL		3	75%	
		471	FLES Program - Spanish		20	50%	
		213	Music - Band Lessons		5	38%	
		174	Music - Band Lessons		5	38%	
		501	Music - Orchestra Lessons		5-7	38%	
		181	Resource Room		3	88%	
		230	SPED Support Room		5	50%	

**Common Facilities**

		3,311	Auditorium		50	50%	note: used for school assembly programs
		890	Auditorium Balcony		50		note: used for indoor recess during inclement weather
		343	Auditorium Lobby		25	50%	note: used for grade 5 students for school assembly programs
		529	Auditorium Stage		20	50%	note: used for indoor recess during inclement weather
		2,305	Cafeteria		60		
		2,833	Gym		50	75%	note: approx. 1.5-unit of standard elementary gym
		187	Gym Lobby				
		2,633	Library		40	100%	

**Non-Instructional Space**

		254	Conference Room - Special Education Conference				
		171	Copy Room				
		181	Copy Room / Curriculum Secretary				
		366	Custodian Workshop				
		110	District Office - Elementary Curriculum Director				
		235	District Office - Special Education Director				
		491	District Office - Special Education Office				
		763	Faculty Lounge / Work Room				

**Sea Cliff Elementary School**

maximum class size : K - 5 = 22

Floor	Room	SQ. FT.	Usage	Room Capacity	Avg Use	% Daily Use	Comments
<b>Non-Instructional Space</b>							
		50	Kiln Room & Clay Storage				
		1,007	Kitchen Food Prep & Servery				
		94	Lactation Room/Storage				note: small storage room off gym lobby
		650	Main Boiler Plant for Building				
		204	Office - Custodian				
		103	Office - Director				
		112	Office - Gym Office				
		222	Office - Librarian				
		338	Office - Main				
		317	Office - Nurse / Attendance		3	100%	
		325	Office - Principal				
		256	Office - Psychologist		3-5	75%	
		203	Office - Social Worker		3-5	75%	
		215	Office - Speech Therapist		5	88%	
		196	Office - Speech Therapist		5	88%	
		214	OT/Behavioral/PE Wellness		5	88%	note: small fitness room by gym office
		397	OT/PT		5	88%	
			Storage				
		143	Storage - Art Room Supplies				
			Storage - Back-Up DW NOC				
			Storage - Custodian Storage				
			Storage - Physical Education				note: small storage room off gym
			Storage - Physical Education				note: small storage room off gym lobby

**North Shore Middle School**

maximum class sizes (core subjects) : grades 6 - 8 = 22

Floor	Room	SQ. FT.	Usage	Room Capacity	Avg Use	% Daily Use	Comments
<b>Core/Imperative Class</b>							
		808	Grade Six	22	14	78%	
		865	Grade Six	22	19	67%	
		892	Grade Six	22	11	67%	
		863	Grade Six	22	19	78%	
		753	Grade Six	22	18	89%	
		859	Grade Six	22	17	78%	
		547	Grade Six - SC SPED	6	5	100%	note: room less than 550 sq. ft.
		858	ELA	22	15	78%	
		1,028	ELA/Health	22	20	78%	
		867	ELA/LOTE	22	13	89%	
		793	ELA/LOTE	22	15	78%	
		1,023	ELA/LOTE	22	18	67%	
		894	ELA/LOTE/Social Studies	22	16	89%	
		861	ENL/LOTE	22	15	89%	
		884	LOTE	22	16	78%	
		797	Math	22	16	78%	
		788	Math	22	17	78%	
		859	Math	22	18	56%	
		830	Math/ELA	22	17	67%	
		827	Math/Health	22	21	78%	
		6,544	<b>Physical Education</b>	30			note: 1 of 3 standard PE stations
			<b>Physical Education</b>	30			note: 1 of 3 standard PE stations
			<b>Physical Education</b>	30			note: 1 of 3 standard PE stations
		999	<b>Science Lab</b>	22	19	78%	
		1,020	<b>Science Lab</b>	22	20	78%	
		1,023	<b>Science Lab</b>	22	19	78%	

**North Shore Middle School**

maximum class sizes (core subjects) : grades 6 - 8 = 22

Floor	Room	SQ. FT.	Usage	Room Capacity	Avg Use	% Daily Use	Comments
<b>Core/Imperative Class</b>							
		1,001	<b>Science Lab</b>	22	16	78%	note: traditional science lab setting, for math also
		1,008	<b>Science Lab</b>	22	16	67%	note: traditional science lab setting, for health also
		951	<b>Science Lab</b>	22	16	67%	note: traditional science lab setting, for math also
		937	<b>Science Lab</b>	22	18	89%	note: traditional science lab setting, for ELS and math also
		930	<b>Science Lab</b>	22	17	67%	note: traditional science lab setting
		1,094	<b>Science Lab/STEAM</b>	22	18	89%	
		1,089	<b>Science Lab/STEAM/Health</b>	22	19	78%	
		706	Social Studies	22	16	89%	note: classroom in library
		759	Social Studies/LOTE	22	19	89%	
		806	Social Studies/LOTE	22	18	78%	

**Exploratory/Elective Class**

		929	<b>Art</b>	21	21	78%	
		1,012	<b>Art</b>	22	21	78%	
		577	<b>Computer Lab</b>	16	15	78%	note: Mac Lab for technology computer science classes
		1,205	<b>FACS Room</b>	22	22	89%	note: FACS lab, kitchen and sewing machines
		540	<b>Makerspace/Technology</b>	7	14	89%	note: room less than 550 sq. ft. note: technology lab, 3D printers, computers, soldering tools
		1,248	<b>Music - Band, Chorus, and Orchestra</b>	50	38	78%	
		943	<b>Music - Music Computers/Production</b>	38	13	67%	note: musical instrumental technology/lab
		1,695	<b>Technology - STEAM/Wood Shop</b>	22	22	67%	note: tools, computers and 3D printers
<b>Total Rooms :</b>				<b>44</b>			
<b>Interchangeable Rooms :</b>				<b>23</b>			
<b>Specialized Rooms :</b>				<b>21</b>			
<b>Operational Capacity :</b>				<b>727</b>			
<b>2018/19 Enrollment :</b>				<b>601</b>			
<b>2018/19 Utilization :</b>				<b>83%</b>			

**Note: bold indicates specialized room**

**North Shore Middle School**

maximum class sizes (core subjects) : grades 6 - 8 = 22

Floor	Room	SQ. FT.	Usage	Room Capacity	Avg Use	% Daily Use	Comments
<b>Support/Resource Rooms Less Than 550 Square Feet</b>							
		480	AIS Math				note: small room in library
		355	AIS Reading		4	44%	
		265	AIS Reading		3	67%	
		237	AIS Reading		4	56%	
		236	AIS Reading/Resource Room		3	56%	
		88	AIS Reading/Resource Room		4	56%	
		255	Music - Band Practice		6	88%	
		299	Music - String Practice		6	88%	

**Common Facilities**

		3,997	Cafetorium		190	56%	
		6,544	Gymnasium		48	89%	note: approx. 3 standard PE stations
		3,381	Library				
		665	Stage				note: off cafeteria, for rehearsals

**Non-Instructional Space**

		978	Boiler Room				note: main boiler plant for building
		259	Conference Room				
		156	Conference Room				note: small conference room inside faculty workroom
		152	Conference Room				note: small conference room inside faculty workroom
		277	Custodian Area				
		103	Discipline Room				
		468	Faculty Breakroom				
		1,823	Faculty Room				
		276	Kitchen				
		711	Kitchen Servery				
		36	Lactation Room				



**North Shore Middle School**

maximum class sizes (core subjects) : grades 6 - 8 = 22

Floor	Room	SQ. FT.	Usage	Room Capacity	Avg Use	% Daily Use	Comments
<b>Non-Instructional Space</b>							
		1,162	Locker Room - Boy's				
		1,162	Locker Room - Girl's				
		1,203	Mechanical Room				note: HVAC for gym and cafeteria
		96	Office - Assistant Director of Secondary SPED				
		202	Office - Assistant Principal				
		127	Office - Coach Office				
		143	Office - Coach Office				
		110	Office - Counseling Room				note: small room next to AP Office
		142	Office - Counseling Room			100%	note: Small group and individual counseling
		108	Office - Counseling Room			100%	note: Small group and individual counseling
		335	Office - Main				
		477	Office - Nurse's Office/Attendance Office				
		202	Office - Principal				
		224	Office - Psychologist			100%	
		142	Office - Psychologist			100%	note: Small group and individual counseling
		157	Office - Social Worker			100%	note: Small group and individual counseling
		135	Office - Social Worker			100%	note: Small group and individual counseling
		508	Office - Technology Help Center/Account Clerk				
		96	Speech		3	100%	
		97	Storage				
		329	Storage				
		82	Storage - Art Storage				
		394	Storage - Art Storage and Kiln Room				
		771	Storage - Custodial				
		125	Testing Center		3	100%	

## North Shore High School

maximum class sizes (core subjects) : grades 9 - 12 = 22

Floor	Room	SQ. FT.	Usage	Room Capacity	Avg Use	% Daily Use	Comments
<b>Core/Imperative Class</b>							
		742	English	22	18	100%	
		640	English/Math	22	18	100%	
		871	English/Social Studies	22	20	100%	
		871	English/Social Studies	22	22	100%	
		873	English/Social Studies	22	20	89%	
		739	English/Social Studies	22	20	78%	
		1,020	English/Social Studies	22	18	78%	
		640	English/World Languages	22	20	100%	
		691	English/World Languages	22	18	100%	
		888	Math	22	22	100%	
		872	Math	22	22	100%	
		872	Math	22	20	100%	
		872	Math	22	20	89%	
		869	Math	22	18	89%	
		871	Math	22	22	100%	
		871	Math/Business	22	20	100%	
		1,987	<b>Physical Education</b>	30	16	44%	
		2,468	<b>Physical Education</b>	30	18	44%	
		3,701	<b>Physical Education</b>	30			note: 1 standard PE station in auxiliary gym
		10,176	<b>Physical Education</b>	30			note: 1 of 5 standard PE stations in gym
			<b>Physical Education</b>	30			note: 1 of 5 standard PE stations in gym
			<b>Physical Education</b>	30			note: 1 of 5 standard PE stations in gym
			<b>Physical Education</b>	30			note: 1 of 5 standard PE stations in gym
			<b>Physical Education</b>	30			note: 1 of 5 standard PE stations in gym

## North Shore High School

maximum class sizes (core subjects) : grades 9 - 12 = 22

Floor	Room	SQ. FT.	Usage	Room Capacity	Avg Use	% Daily Use	Comments
<b>Core/Imperative Class</b>							
		994	Science Lab	20	20	100%	note: earth science and physics
		988	Science Lab	20	20	100%	note: physics
		1,140	Science Lab	22	20	89%	note: biology
		1,140	Science Lab	22	18	89%	note: biology
		1,146	Science Lab	22	22	89%	note: chemistry
		1,315	Science Lab	22	20	100%	note: chemistry
		1,315	Science Lab	22	22	78%	note: chemistry
		1,345	Science Lab	22	20	100%	note: physics
		1,130	Science Lab	22	22	100%	note: earth science
		1,130	Science Lab	22	22	89%	note: earth science
		667	Social Studies	22	22	100%	
		866	Social Studies	22	20	78%	
		330	SPED/Life Skills	4	5	89%	note: room less than 550 sq. ft.
		742	World Languages	22	14	100%	
		586	World Languages	22	16	78%	
		901	World Languages/Math	22	20	100%	
		1,066	World Languages/Social Studies	22	24	100%	
		873	World Languages/Social Studies	22	20	100%	
		872	World Languages/Social Studies	22	21	100%	
		640	World Languages/Social Studies	22	18	100%	
		640	World Languages/Social Studies	22	14	100%	
		886	World Languages/Social Studies	22	20	100%	

## North Shore High School

maximum class sizes (core subjects) : grades 9 - 12 = 22

Floor	Room	SQ. FT.	Usage	Room Capacity	Avg Use	% Daily Use	Comments
<b>Exploratory/Elective Class</b>							
		1,328	<b>Art</b>	22	16	78%	
		1,231	<b>Art</b>	22	18	78%	
		873	<b>Computer Lab</b>	22	20	67%	
		873	<b>Computer Lab</b>	22	16	100%	
		872	<b>Computer Lab</b>	22	18	78%	
		648	<b>Computer Lab</b>	19	18	67%	
		917	<b>Home &amp; Careers</b>	18	10	67%	note: family and consumer science (kitchens)
		640	<b>Math Center</b>	18	5	100%	
		1,550	<b>Music - Band</b>	62	85	11%	note: for lessons throughout the day also
		1,211	<b>Music - Chorus</b>	48	79	22%	note: for lessons throughout the day also
		605	<b>Music - Music Theory</b>	17	10	22%	
		2,516	<b>Music - Orchestra</b>	101	55	22%	note: for lessons throughout the day also
		734	<b>Photography</b>	16	14	56%	
		726	<b>Technology</b>	10	14	56%	
		2,159	<b>Technology - Wood Shop</b>	22	14	56%	
<b>Total Rooms :</b>			<b>61</b>				
<b>Interchangeable Rooms :</b>			<b>27</b>				
<b>Specialized Rooms :</b>			<b>34</b>				
<b>Operational Capacity :</b>			<b>1,046</b>				
<b>2018/19 Enrollment :</b>			<b>851</b>				
<b>2018/19 Utilization :</b>			<b>81%</b>				

Note: bold indicates specialized room

**North Shore High School**

maximum class sizes (core subjects) : grades 9 - 12 = 22

Floor	Room	SQ. FT.	Usage	Room Capacity	Avg Use	% Daily Use	Comments
<b>Support/Resource Rooms Less Than 550 Square Feet</b>							
		268	Math Research Room		3	56%	
		165	Reading				
		190	Science Research		4	44%	
		197	SPED/Resource Room				
		234	SPED/Resource Room				
		301	SPED/Resource Room		3	100%	
		232	SPED/Resource Room				
		188	Writing Center		4	67%	

**Common Facilities**

		7,750	Auditorium/Theater				note: for large group gatherings and theater productions
		1,892	Auditorium/Theater Lobby				note: for student senior photos
		5,211	Cafeteria		225	44%	
		10,176	Gym		75	100%	note: approx. 5 standard PE stations
		3,701	Gym - Auxiliary		34	67%	note: approx. 1 standard PE station
		4,232	Library		45	100%	

**Non-Instructional Space**

		3,140	Boiler Room				
		103	Conference Room				note: small space off classroom H-5
		100	Conference Room				
		102	Conference Room				
		145	Copy Room				
		75	Copy Room				
		240	CSE Meeting Room				
		1,418	Custodian Workshop				note: used for repairs of building equipment

**North Shore High School**

maximum class sizes (core subjects) : grades 9 - 12 = 22

Floor	Room	SQ. FT.	Usage	Room Capacity	Avg Use	% Daily Use	Comments
<b>Non-Instructional Space</b>							
		539	Dark Room				
		271	Electric Gear Room				
		481	Faculty Breakroom				
		263	Faculty Work Room				
		625	Faculty Work Room				
		872	Faculty Work Room				
		304	Faculty Work Room				
		361	Faculty Work Room				
		140	Faculty Work Room				
		304	Gallery				note: for students' art and projects
		121	Kiln Room				
		2,191	Kitchen				
		3,576	Locker Room - Men's Locker Room				note: includes 3 PE offices and 1 coach office
		3,576	Locker Room - Women's Locker Room				note: includes 2 PE offices and 1 coach office
		1,090	Meeting/Conferences				note: designed as a television studio but currently not being used for this purpose
		100	NOC Room				note: servers and switches for technology dept.
		402	Office - Dean				
		118	Office - Accounting				
		121	Office - Assistant Principal				
		160	Office - Assistant Principal				
		117	Office - Athletic Director				
		128	Office - Attendance				
		75	Office - Choral				
		119	Office - Community Service				

**North Shore High School**

maximum class sizes (core subjects) : grades 9 - 12 = 22

Floor	Room	SQ. FT.	Usage	Room Capacity	Avg Use	% Daily Use	Comments
<b>Non-Instructional Space</b>							
		108	Office - Curriculum Office				
		130	Office - Curriculum Office				
		109	Office - Curriculum Office				
		124	Office - Curriculum Office				
		310	Office - Custodian				
		410	Office - Department Administrators				
		1,100	Office - District IT Office				
		214	Office - District Performing Arts Offices				
		125	Office - District Performing Arts Offices				
		124	Office - District Performing Arts Offices				
		220	Office - Food Service				
		672	Office - Guidance				
		178	Office - Guidance Counselor				
		165	Office - Guidance Counselor				
		147	Office - Guidance Counselor				
		122	Office - Guidance Counselor				
		103	Office - Guidance Counselor				
		253	Office - Library				
		840	Office - Main				
		560	Office - Nurse				
		330	Office - Principal				
		94	Office - Psychologist				
		91	Office - Social Worker				
		89	Office - Social Worker				

**North Shore High School**

maximum class sizes (core subjects) : grades 9 - 12 = 22

Floor	Room	SQ. FT.	Usage	Room Capacity	Avg Use	% Daily Use	Comments
<b>Non-Instructional Space</b>							
		170	Office - Woodshop				
		369	Photography Prep Area				
		342	Science Prep				
		151	Storage				
		150	Storage				
		150	Storage				
		238	Storage - Art Supplies				
			Storage - Custodial Supplies				
		98	Storage - Home & Careers Supplies				
		162	Storage - Media Lab Storage				note: for theater department
		2,312	Storage - PE Storage				
		122	Storage - Robotics Closet				
		1,407	Storage - School Supplies				
		1,297	Storage - Sports				
			Student Store				
			Trainer's Room				



Mr. Salvatore Marinello, President  
Ms. Jeanette Santos, Vice President  
Ms. Mildred Browne  
Mr. Sydney Finkelstein  
Ms. Ilene Herz, Esq  
Mr. Peter Wunsch  
Ms. Maryann Zumpano  
Ms. Joanne Klein, District Clerk

Mr. Michael Flynn  
Chief Operating Officer  
Ms. Angelique Johnson-Dingle  
District Superintendent





**Division of Instructional Support Services**

Office of School Planning & Research  
31 Lee Avenue  
Wheatley Heights, NY 11798  
631-595-6802